

# filcolana

OBSESSED WITH QUALITY YARN SINCE 1952



---

## Lazio

---

Design: Sanne Fjalland

**Lazio is an oversized jacket with a geometrical pattern inspired by labyrinths in Italian Renaissance gardens.**

**The jacket is constructed with an overlap on the front pieces allowing the garter stitch front bands to overlap if the jacket is closed with buttons or a belt.**





---

## Sizes & Measurements

---

**S (M) L (XL)**

**Fits chest circumference**

83-90 (91-98) 99-106 (107-116) cm

**Circumference (A)**

123 (130) 138 (145) cm

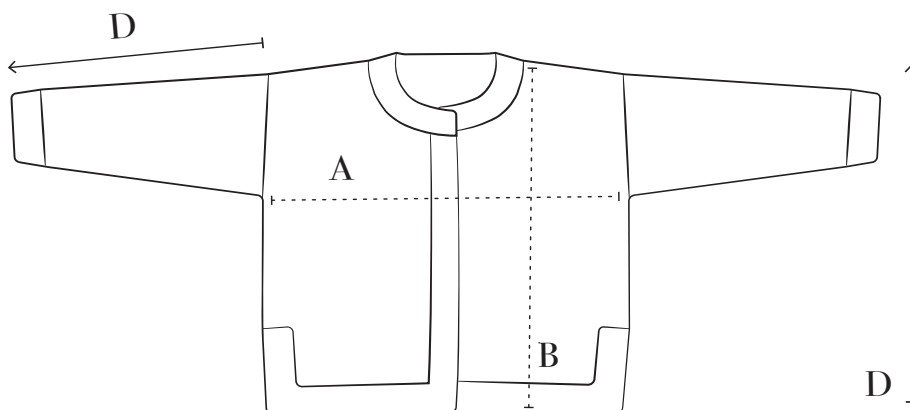
**Length (B)**

62 (63) 64 (65) cm

**Sleeve length (C)**

45 (45) 45 (45) cm

**Knitting direction (D)**



---

## Materials

---

**YARN FROM FILCOLANA**

**Peruvian** colour 812 (Granite)

600 (650) 700 (750) g

**and**

**Tilia** colour 338 (Frost Grey)

150 (150) 175 (175) g

**Entire work is knitted with 1 strand of each quality held together.**

**NEEDLES**

Circular needles 4.5 mm, 5 mm and 5.5 mm, 80 cm

Double pointed needles 5 mm and 5.5 mm (dpn's can be omitted if you are working magic loop on long circular needle)

**EXTRAS**

4 Stitch markers

2-3 Stitch holders

---

## Gauge

---

16 stitches and 24 rows in stockinette with 1 strand of Peruvian and 1 strand of Tilia held together, on 5.5 mm needle = 10 x 10 cm.

The gauge is measured after washing.

Needle sizes are for guidance only.

If you have more stitches on 10 cm, change to a larger needle. If you have fewer stitches on 10 cm, change to smaller needles.



---

# Technique

---

## ABBREVIATIONS

**st(s):** stitch(es)

**k:** knit

**p:** purl

**tog:** together

**tbl:** through the back loop

**RS:** right side

**WS:** wrong side

## M1L - Left slanted increase

From the front, lift the horizontal strand between stitches with the left needle and knit through the back loop (1 st increase).

## skp

Slip 1 st to right hand needle, k1, pass slipped stitch over.



---

# Workflow

---

The Lazio jacket is worked from the bottom and up. Work the back and fronts separately to the top of the slit.

The graphic pattern on the fronts is work according to chart. When the height of the slit is achieved, all parts are joined and the body is worked in one piece to armhole, where work is divided once more, and fronts and the back are then finished separately.

Stitches are picked up along the armholes and the sleeves are work top down, witj graphic pattern according to charts.

Finally, stitches for neckband are picked up along the rightside of the neckline and the neckband is worked in garter st ridges as well as frontbands and lower hem and sleeve edges.

---

# Charts

---

Please find patterns on the last pages in this pattern.

All charts are read from the bottom and up, from right to left on right side rows, and from left to right on wrong side rows.



---

# Pattern

---

## BACK

With long tail cast on method, cast on 87 (93) 99 (105) sts with 1 strand of each quality held together on 5 mm needle.

Work back and forth on the needle.

Knit 15 rows, last row is from WS.

Change to 5.5 mm needle.

**Next row (RS):** Knit 11 (12) 12 (13) sts, \*M1L, K13 (14) 15 (16)\*, repeat from \* to \* 4 times more, end with M1L, K11 (11) 12 (12).

There are now 93 (99) 105) 111 sts on the needle.

Hereafter the first 8 sts and the last 8 sts on every row are worked knitted, center 77 (83) 89 (95) sts are worked in stockinette (knit on RS, purl on WS).

**NOTE:** Be careful not to knit these 8 sts each side to firm, this will cause the slit to be shorter than the center stockinette part.

Continue like this, to work measures 15 cm from cast on edge, the last row is from WS.

Break yarn and leave the sts to rest on a stitch holder, while working the fronts.

## LEFTFRONT

With long tail cast on method, cast on 50 (53) 56 (59) sts with 1 strand of each quality held together, on 5 mm needle.

Work back and forth on the needle.

Knit 15 rows, the last row is from WS.

Change to 5.5 mm circular needle.

**Next row (RS):** \*K12 (13) 14 (15), M1L\*, repeat from \* to \* 2 times more, knit to end of row.

There are now 53 (56) 59 (62) sts on the needle.

Hereafter the first 8 sts and the last 8 sts on every row are worked knitted, center 37 (40) 43 (46) sts are worked in stockinette (knit on RS, purl on WS).

**NOTE:** Be careful not to knit these 8 sts each side to firm, this will cause the slit to be shorter than the center stockinette part.

Continue like this, to work measures 9.5 cm from cast on edge, the last row is from WS.

**Next row (RS):** Knit 15 (18) 21 (24) sts, insert marker, k30, insert marker, knit to end of row.

Now work according to chart A over the center 30 sts between the markers, as follows:

**Next row (WS):** K8, slip marker to right hand needle, work according to 1st row of chart A to marker, slip marker to right hand needle, purl to the last 8 sts, k8.

**Next row:** Knit to first marker, slip marker, work according to 2nd row of chart A, slip marker, knit to end of row.

Continue like this, and work center 30 sts according to chart A, to work measures 15 cm from cast on edge. The last row is from the WS.

Break yarn and leave sts to rest on a stitch holder, while working the right front.





## RIGHT FRONT

With long tail cast on method, cast on 50 (53) 56 (59) sts with 1 strand of each quality held together, on 5 mm needle.

Work back and forth on the needle.

Knit 15 rows, the last row is from WS.

Change to 5.5 mm circular needle.

**Next row (RS):** K14, \*M1L, k12 (13) 14 (15)\*, repeat from \* to \* to end of row.

There are now 53 (56) 59 (62) sts on the needle.

Hereafter the first 8 sts and the last 8 sts on every row are worked knitted, middle 37 (40) 43 (46) sts are worked in stockinette (knit on RS, purl on WS).

**NOTE:** Be careful not to knit these 8 sts each side to firm, this will cause the slit to be shorter than the middle stockinette part.

Continue like this, to work measures 9.5 cm from cast on edge, the last row is from WS.



**Next row (RS):** Knit 8 sts, insert marker, k30, insert marker, knit to end of row.

Now work according to chart B over the middle 30 sts between the markers, as follows:

**Next row (WS):** K8, purl to first marker, slip marker to right hand needle, work according to 1<sup>st</sup> row of chart B to next marker, slip marker to right hand needle, k8.

**Next row:** Knit to first marker, slip marker, work according to 2<sup>nd</sup> row of chart B, slip marker, knit to end of row.

Continue like this, and work middle 30 sts according to chart A, to work measures 15 cm from cast on edge. The last row is from the WS.

Do NOT break yarn.

## BODY

**Join back and fronts, as follows:**

**Next row (RS):** Work all sts on right front, then sts on the back and finally, the sts on left front = 199 (211) 223 (235) sts.

Continue straight, knit outer 8 sts each side on every row. The sts between the markers are still worked according to charts A and B, all other sts are worked in stockinette, until work measures 39 cm. The last row is from the WS.

Now work is divided into right front, back and left front. Each part is finished separately, as follows:

## RIGHT FRONT

**Next row (RS):** Work the 53 (56) 59 (62) sts of right front as described so far.

Turn work and leave remaining sts to rest on the needle or a stitch holder.

Continue working sts on right front, first st towards the armhole is purled on all rows (selvedge st).

When all rows of chart B have been worked, both markers are removed and all sts are worked stockinette, except for the 8 sts of the front band which is still knitted and the first st towards the armhole which is purled on all rows.

Continue like this to armhole measures 13 (14) 15 (16) cm. The last row is from the WS.



## Neck

**Next row (RS):** K8, slip these 8 sts to a stitch holder, bind off the next 7 sts knitwise, knit to the last 22 sts, insert marker, work next 21 sts according to 1st row of chart D, insert marker, p1.

**Next row:** P1, slip marker, work according to 2nd row of chart D to marker, slip marker, purl to end of row.

## Decrease for neckline

**1st row (RS):** P1, k3tog, knit to marker, slip marker, work according to chart D to marker, slip marker, p1.

**2nd row:** P1, slip marker, work according to chart D to marker, slip marker, purl to end of row.

**3rd row:** P1, k2tog, knit to marker, slip marker, work according to chart D to marker, slip marker, p1.

**4th row:** Work as on 2nd row.

Work 1st – 4th row 2 times more = 29 (32) 35 (38) sts left on the needle.

Continue straight in stockinette, purl first and last st on every row, and work according to chart D on all sts between the marker, until all rows of chart D have been worked. The last row is from the WS.

Bind off all shoulder sts knitwise.

## BACK

Join yarn to the RS of the resting sts and knit next 93 (99) 105) 111 sts.

Turn work and leave remaining sts to rest on the needle or a stitch holder, while working the back.

Work straight in stockinette, first and last st on every row is purled, until armhole measures 13 (14) 15 (16) cm, **AT THE SAME TIME**, on the last row from the WS, insert markers as follows:

**The last row (WS):** P1, insert marker, p21, insert marker, purl to the last 22 sts, insert marker, p21, insert marker, p1.

**Next row (RS):** P1, slip marker, work according to 1st row of chart C, slip marker, knit to next marker, work according to 1st row of chart D, p1.

Continue like this, until all rows of chart C and D have been worked. The last row is from the WS.

Bind off all sts knitwise.

## LEFT FRONT

Join yarn to the RS of the resting sts, p1 and continue in stockinette, then work according to chart A and the 8 sts of the front band worked knitted.

Work like this, the st towards the armhole is purled on every row (selvedge st), and work according to chart A, until all rows of chart A have been worked.

Remove both markers and continue in stockinette over all sts, except for the purled selvedge st towards the armhole and the 8 sts for front band which is knitted on all rows, until armhole measures 13 (14) 15 (16) cm. The last row is from the WS.

## Neck

**Next row (RS):** P1, slip marker, work according to 1st row of chart C to next marker, slip marker, knit to end of row.

**Next row:** K8, slip these 8 sts to a stitch holder, bind off the next 7 sts purlwise, purl to marker, slip marker, work according to 2nd row of chart C, slip marker, p1.

## Decrease for neckline

**1st row (RS):** P1, slip marker, work according to chart C, slip marker, knit to the last 4 sts, k3tog tbl, p1.

**2nd row:** Purl to marker, slip marker, work according to chart C, slip marker, p1.

**3rd row:** P1, slip marker, work according to chart C, slip marker, knit to the last 3 sts, skp, p1.

**4th row:** Work as on 2nd row.

Work 1st – 4th row 2 times more = 29 (32) 35 (38) sts left on the needle.

Continue straight in stockinette, purl first and last st on every row, and work according to chart C on all sts between the marker, until all rows of chart C have been worked. The last row is from the WS.

Bind off all shoulder sts knitwise.

## Finishing

Mark the outer 29 (32) 35 (38) sts on each side of the back = shoulder sts of back.

With RS facing, sew front and back shoulders together with Kitchener sts.



## SLEEVES

with 1 strand of each quality and 5.5 mm needle, pick up and knit sts around the RS of the armhole, as follows:

Join yarn to the bottom of the armhole and pick up 1 st, then pick up 18 (19) 21 (23) sts towards the first purl row in the graphic pattern, insert marker, pick up another 21 sts towards the shoulder seam, then pick up 21 sts down the other side of the armhole to the last purl row, insert marker and pick up another 18 (19) 21 (23) sts op, to the bottom of the armhole = 79 (81) 85 (89) sts.

Insert a beginning of round marker and join to a round.

The sleeve is worked in the round, the middle 42 sts are worked according to chart E, then the graphic pattern of the sleeve is worked as an extension of the pattern on the back and the fronts.

**Next round:** Knit to marker, slip marker, work according to 1st row of chart E to next marker, knit to end of round.

Continue like this, until sleeve measures 3 cm from armhole.

**Next round (decrease round):** K1, k2tog, knit and work according to chart E, to the last 2 sts, skp.

Repeat this decrease round for every 2.5 (2.5) 2 (2) cm, until all rows of chart E have been worked.

**Next round:** Knit to marker, remove marker, k6, insert marker, k30, insert another marker, k6, remove marker, knit to end of round.  
Now there are 30 sts between the markers.

Continue in stockinette and repeat the decrease round with same frequency as before, until 5 cm of stockinette has been worked, measured from the last round of chart E.

Now work the 30 middle sts according to chart F, remaining sts are worked in stockinette and decreases are continued as well.

When all rows of chart F have been worked, continue in stockinette over all sts, still repeating the decrease round with same frequency as so far, until a total of 15 (15) 17 (18) decrease round have been worked and there are 49 (51) 51 (53) sts left on the needle.

Continue straight until the sleeve measures 40 cm from armhole.

Change to 5 mm needle.

### Sleeve hem

\*Purl 1 round, knit 1 round\*, repeat from \* to \*, to a total of 15 rounds have been worked and there are 8 garter st ridges when RS facing.

Bind off all sts knitwise.

Work the second sleeve the same way.

## NECK BAND

Hold the garment RS facing and slip the 8 sts of right front to the righthand needle tip of the 4.5 mm circular needle.

Join yarn to work and pick up and knit 33 new sts along the neckline of the right front to the shoulder seam, then pick up 35 sts along the neck and 33 sts from left shoulder seam and down the neckline of left front, to the resting 8 sts of the front band, knit these 8 sts = 117 sts

Knit 3 rows, the last row is from the WS.

**Next row (decrease row, RS):** Knit 15 sts, k2tog, knit all sts to the shoulder seam, k2tog, knit all sts to next shoulder seam, k2tog, knit to the last 17 sts, k2tog, knit to end of row = 113 sts.

Knit 7 rows, the last row is from the WS.

**Next row (RS):** Repeat above decrease row.

Knit 3 rows, the last row is from the WS.

Bind off on next RS row, as follows:

**Next row (RS):** Bind off first 15 sts knitwise, k2tog and bind off these sts, bind off knitwise to next shoulder seam, k2tog and bind off these sts, bind off knitwise to next shoulder seam, k2tog and bind off these sts, bind off knitwise to the last 17 sts, k2tog and bind off these sts, bind off remaining sts knitwise.

## FINISHING

Weave in all ends.

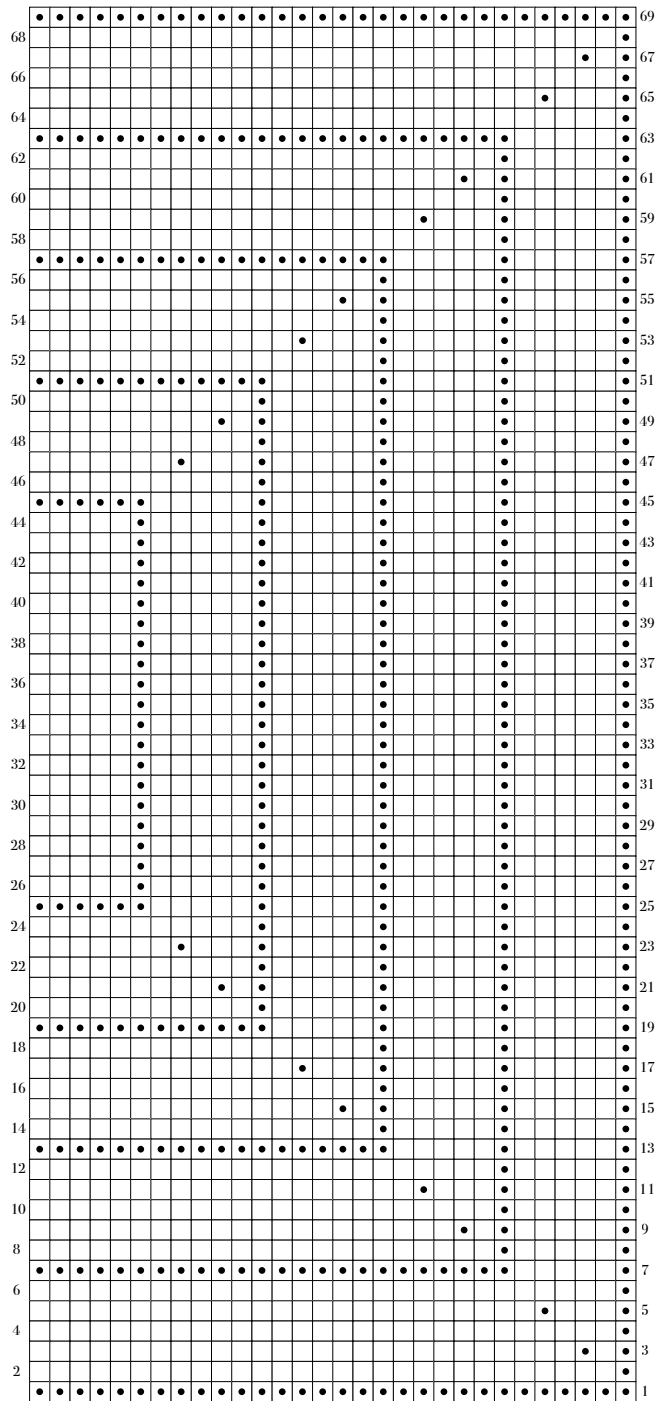
Wash the jacket carefully according to the instructions on the labels and leave it to dry flat on a towel.



# Charts

- Knit on RS, purl on WS
- Purl on RS, knit on WS

## Chart A



## Chart B

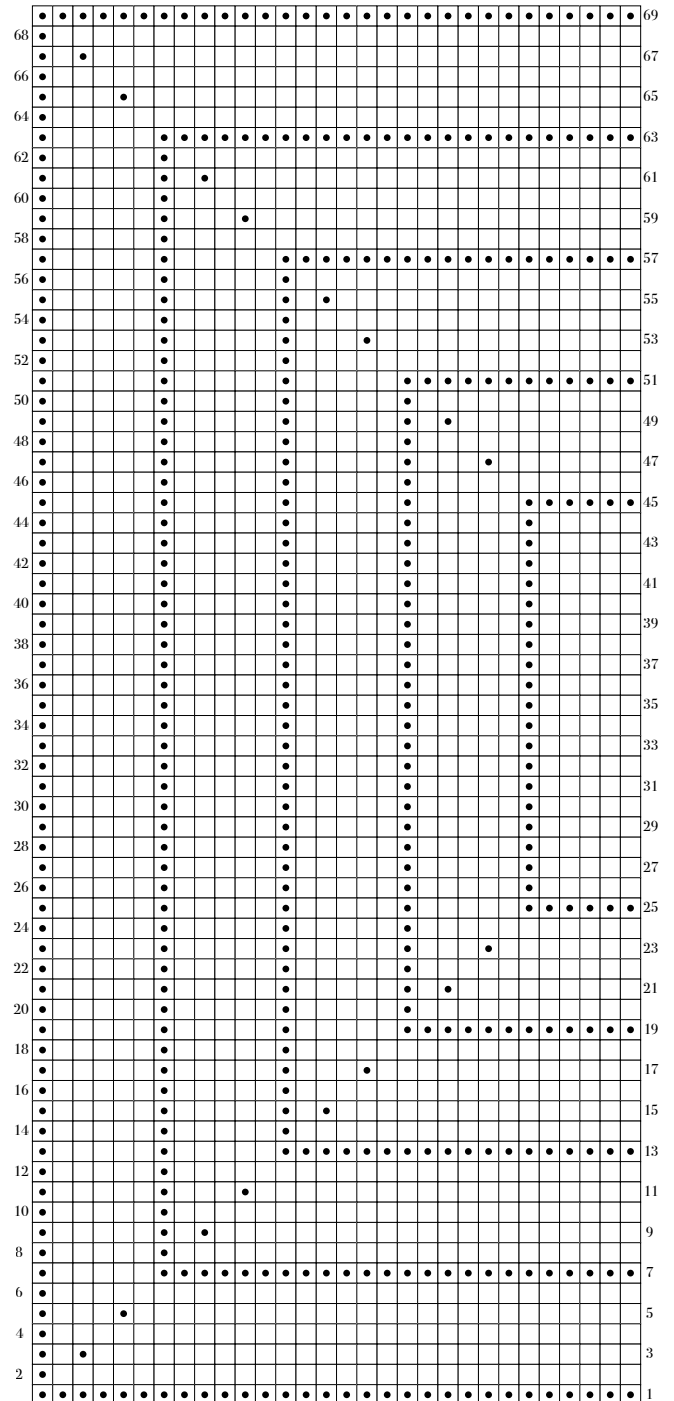






Chart C

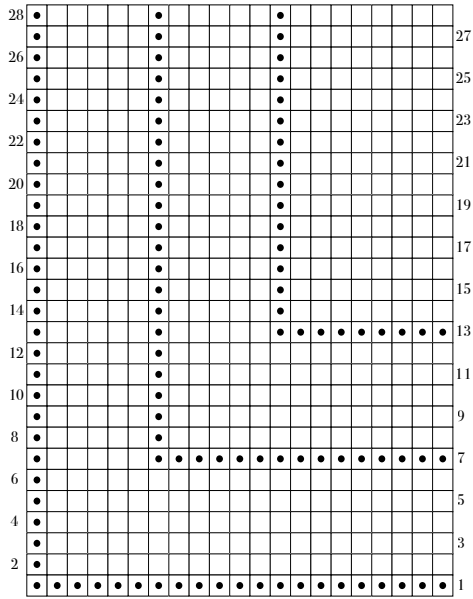


Chart D

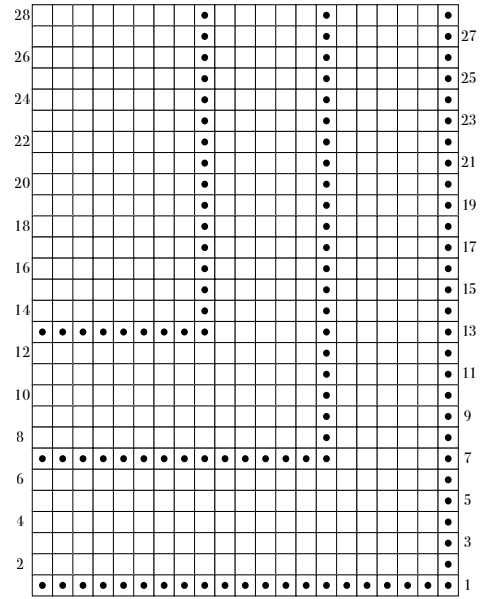
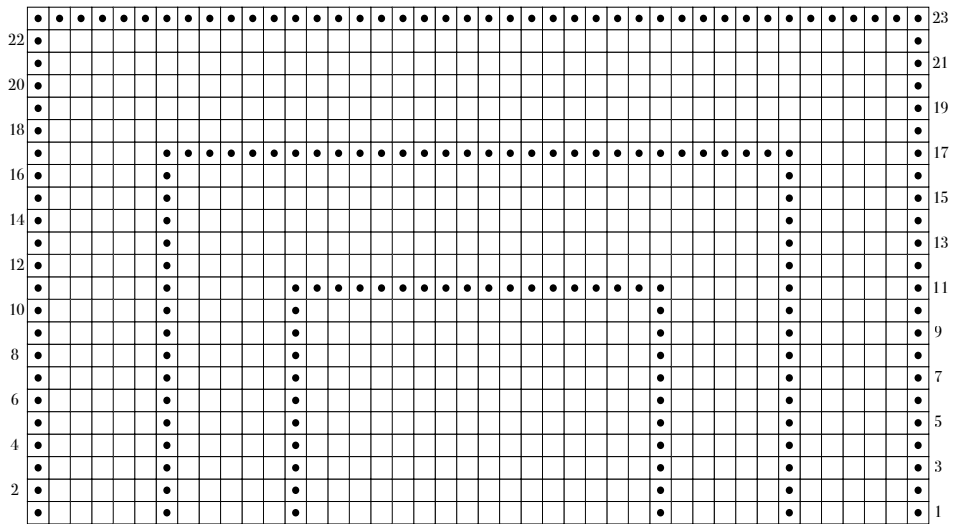


Chart E





# Chart F

