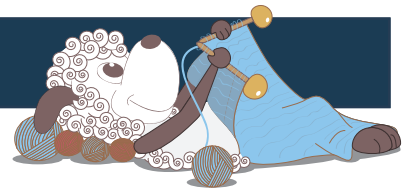


# Ninni - a cozy lace paneled cardigan



Design: Hanna Maciejewska

*Ninni is knit top down seamlessly featuring raglan sleeves and a lovely lace pattern on the back. Top it off with your favorite buttons in a matching or contrasting color and wear paired with dressy jeans, a narrow or wide-swinging skirt or an elegant sheath dress.*

3rd English edition - March 2019 © Filcolana A/S

## Materials

250 (300) 300 (350) 400 (450) 500 (550) g Pernilla by Filcolana in color 822  
3.5 mm (60 and 100 cm) circular needles or double pointed needles  
3.75 mm (60 and 100 cm) circular needles or double pointed needles  
4 stitch markers in one color (A)  
2 stitch markers in a second color (B)  
10 (11) 11 (13) 13 (14) 14 (15) buttons (23 mm diameter)  
Stitch holder or scrap yarn

## Sizes

14 years (XS) S (M) L (XL) 2XL (3XL)

## Measurements

Body, chest: 76 (86) 91.5 (96.5) 101.5 (111.5) 122 (132) cm  
Cardigan, chest: 82 (89) 94 (104) 106 (120) 130 (137) cm



Total length: 54 (55) 61 (63.75) 64.5 (67) 68.5 (71) cm

Sleeve length: 45 cm (all sizes)

The cardigan is designed to be worn with up to 8 cm of positive ease.

### Gauge

22,5 sts and 33 rows in Stockinette stitch on 3,75 mm needles after blocking = 10 x 10 cm.

1 repeat of Lace Pattern (10 sts and 20 rows) on 3,75 mm needles after blocking = approx. 5.25 cm x 6 cm.

### Special abbreviations

**M1L**: from the front, lift the horizontal strand between stitches with the left needle and knit through the back loop.

**M1R**: from the back, lift the horizontal strand between stitches with the left needle and knit through the front loop.

**M1LP**: from the front, lift the horizontal strand between stitches with the left needle and purl through the back loop.

**M1RP**: from the back, lift the horizontal strand between stitches with the left needle and purl through the front loop.

**s2tog-k1-p2sso**: slip 2 stitches together knitwise, knit 1, then pass slipped stitches over.

**pm**: place marker.

**sm**: slip marker.



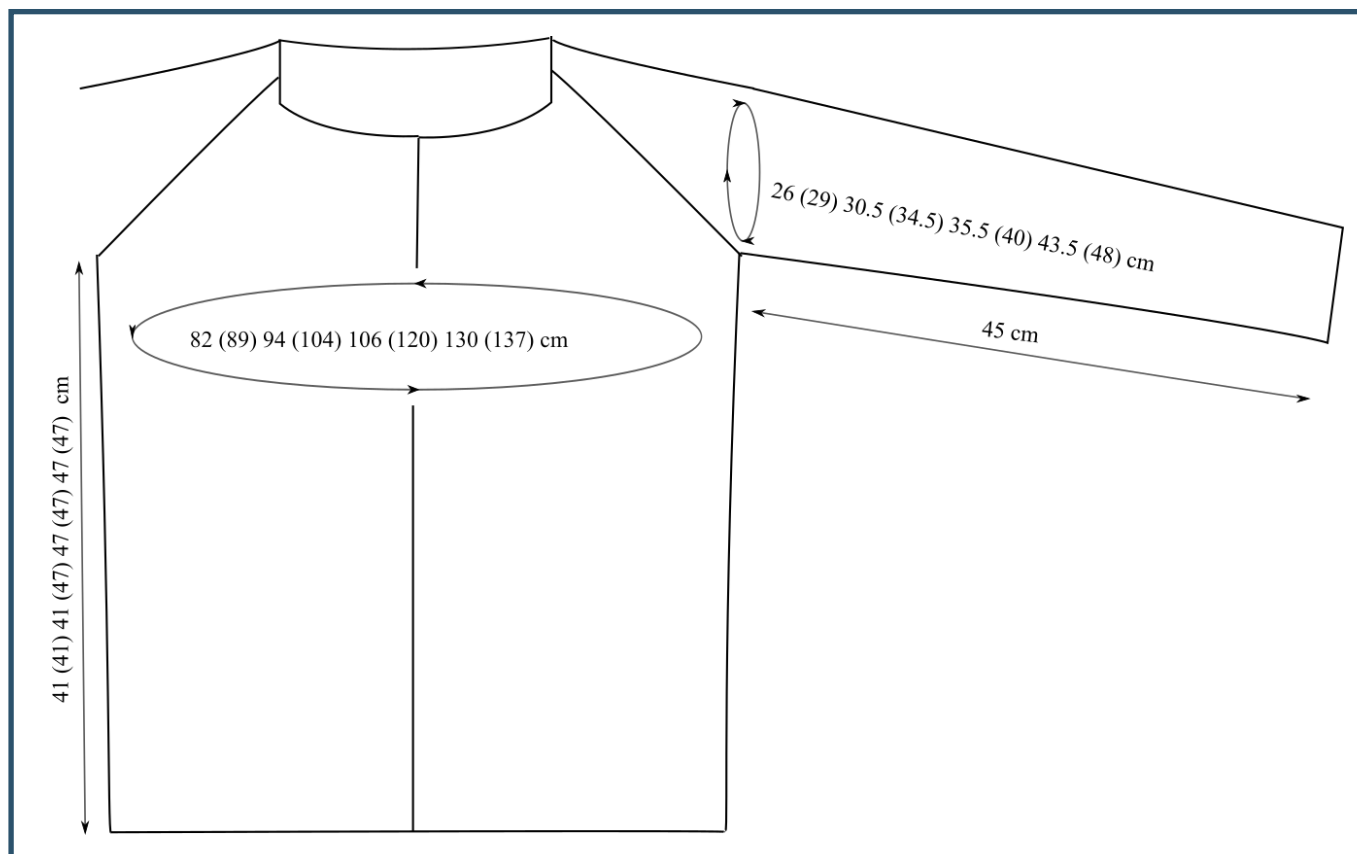
### Directions for knitting

This cardigan is knit seamlessly from the top down. The yoke starts with provisional cast-on and is worked back and forth in one piece to the underarms.

Then the sleeve sts are placed on the holder and the body is worked down to the hem. After the body is done sleeve sts are knit. At the very end the neckband and front bands are worked.

### Yoke

Using 3.75 mm needles and a provisional cast-on method, cast on 51 (59) 61 (69) 69 (75) 77 (77) sts. Set up row (WS): P1, (left front), pm A, p9 (11) 11 (13) 13 (15) 15 (15), (left sleeve), pm A, p31 (35) 37 (41) 41 (43) 45 (45) sts, (back), pm A, p9 (11) 11



(13) 13 (15) 15 (15), (right sleeve), pm A, p1 (right front).

Row 1 – raglan shaping (RS): Knit to m A, M1R, sm A, p1, M1L, knit to 1 st before next m A, M1R, p1, sm A, M1L, work Row 3 (7) 9 (3) 3 (5) 7 (7) of Raglan Lace pattern, M1R, sm A, p1, M1L, knit to 1 st before next m A, M1R, p1, sm A, M1L, knit to end. [8 sts increased]

Row 2 (WS): Purl to m A, sm A, k1, purl to 1 st before next m A, k1, sm A, purl to next m A, sm A, k1, purl to 1 st before next m, k1, sm A, purl to end.

Row 3 – raglan shaping: Knit to m A, M1R, sm A, p1, M1L, knit to 1 st before next m A, M1R, p1, sm A, M1L, work appropriate row of Raglan Lace pattern

to next m A, M1R, sm A, p1, M1L, knit to 1 st before next m A, M1R, p1, sm A, M1L, knit to end. [8 sts increased]

Row 4 and all even rows (WS): Knit the knit stitches and purl the purl stitches.

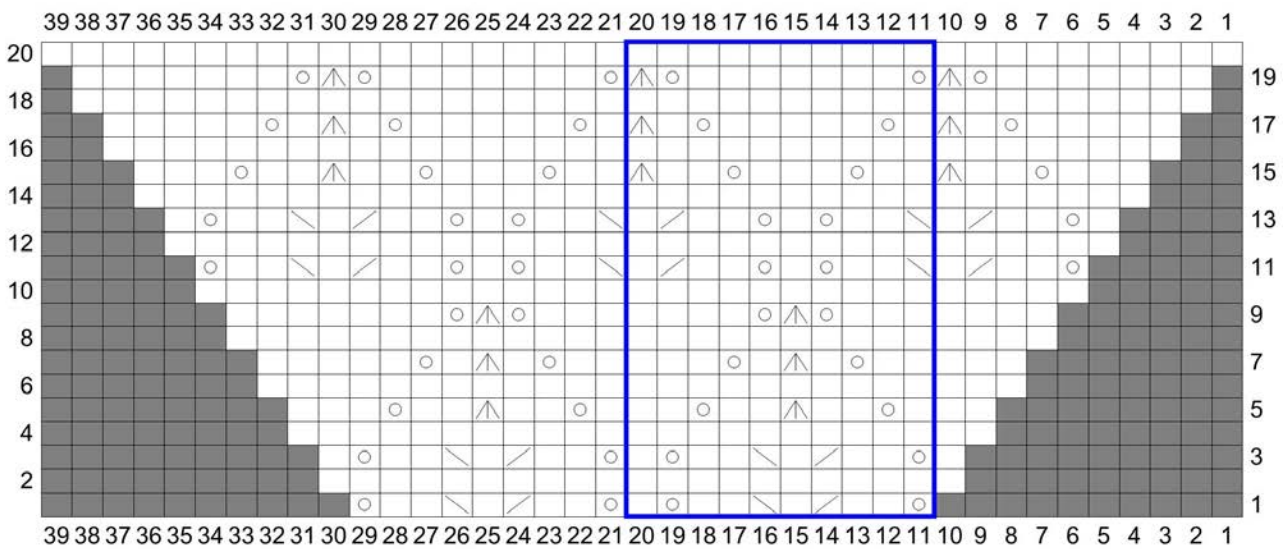
Repeat Rows 3 and 4, following appropriate rows of Raglan Lace pattern and making raglan increases as established, 6 more times.

There are now 115 (123) 125 (133) 133 (139) 141 (141) sts on the needle: 9 sts for each front, 25 (27) 27 (29) 29 (31) 31 (31) sts for each sleeve and 47 (51) 53 (57) 57 (59) 61 (61) sts for back.

**Note:** After all rows of Raglan Lace pattern are completed repeat rows 1 – 20 from lace pattern back.

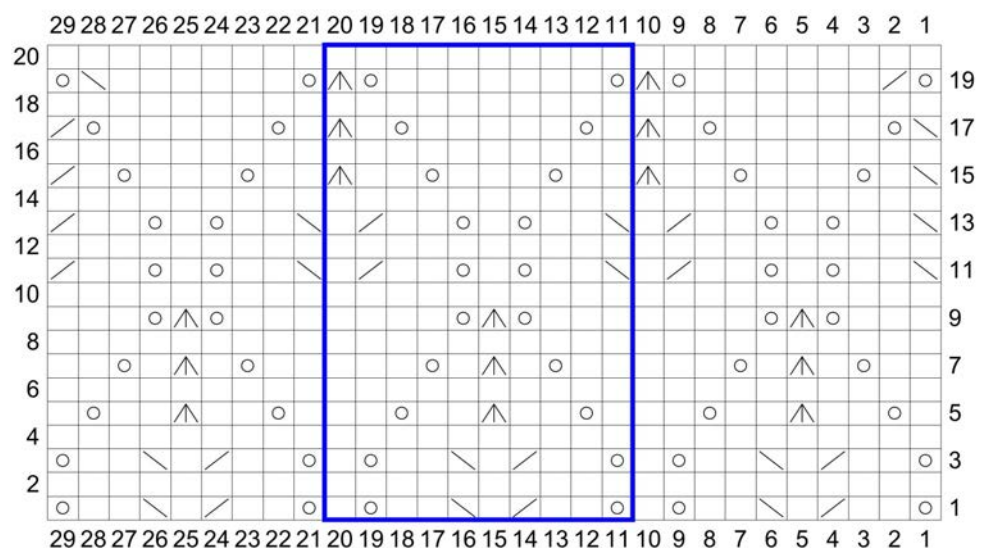
*Note: The first written version of the lace pattern on page 7.*

**Chart - lace pattern for raglan**



**Chart - lace pattern for back**

- No stitch
- k on RS, p on WS
- yarn over
- k2tog
- ssk
- s2tog-k1-p2sso
- pattern repeat



**Neckline shaping**

Next Row 1 (RS): Knit to m A, M1R, sm A, p1, M1L, knit to 1 st before next m A, M1R, p1, sm A, M1L, work appropriate row of Raglan Lace pattern, M1R, sm A, p1, M1L, knit to 1 st before next m A, M1R, p1, sm A, M1L, knit to end, cast on 1 st.

Next Row 2 (WS): Knit the knit stitches and purl the purl stitches, cast on 1 st.

Repeat last two rows 1 more time.

Next Row 5: Knit to m A, M1R, sm A, p1, M1L, knit to 1 st before next m A, M1R, p1, sm A, M1L, work appropriate row of Raglan Lace pattern, M1R, sm A, p1, M1L, knit to 1 st before next m A, M1R, p1, sm A, M1L, knit to end, cast on 2 sts.

Next Row 6: Knit the knit stitches and purl the purl stitches, cast on 2 sts.

Next Row 7: Knit to m A, M1R, sm A, p1, M1L, knit to 1 st before next m A, M1R, p1, sm A, M1L, work appropriate row of Raglan Lace pattern, M1R, sm A, p1, M1L, knit to 1 st before next m A, M1R, p1, sm A, M1L, knit to end, cast on 3 sts.

Next Row 8: Knit the knit stitches and purl the purl stitches, cast on 3 sts.

Next Row 9: Knit to m A, M1R, sm A, p1, M1L, knit to 1 st before next m A, M1R, p1, sm A, M1L, work appropriate row of Raglan Lace pattern, M1R, sm A, p1, M1L, knit to 1 st before next m A, M1R, p1, sm A, M1L, knit to end, cast on 9 (4) 4 (5) 5 (6) 6 (6) sts.

Next Row 10: Knit the knit stitches and purl the purl stitches, cast on 9 (4) 4 (5) 5 (6) 6 (6) sts.

Next Row 11: Knit to m A, M1R, sm A, p1, M1L, knit to 1 st before next m A, M1R, p1, sm A, M1L, work appropriate row of Raglan Lace pattern, M1R, sm A, p1, M1L, knit to 1 st before next m A, M1R, p1, sm A, M1L, knit to end, cast on 0 (7) 8 (8) 10 (10) 11 (11) sts.

Next Row 12: Knit the knit stitches and purl the purl stitches, cast on 0 (7) 8 (8) 10 (10) 11 (11) sts.

There are now 195 (207) 211 (221) 225 (233) 237 (237) sts on the needle: 31 (33) 34 (35) 37 (38) 39 (39) sts for each front, 37 (39) 39 (41) 41 (43) 43 (43) sts for each sleeve and 59 (63) 65 (69) 69 (71) 73 (73) sts for back.

Row 13 – raglan shaping (RS): Knit to m A, M1R, sm A, p1, M1L, knit to 1 st before next m A, M1R, p1, sm A, M1L, work appropriate row of Raglan Lace pattern, M1R, sm A, p1, M1L, knit to 1 st before next m A, M1R, p1, sm A, M1L, knit to end. [8 sts increased]

Row 14 and all even rows (WS): Knit the knit stitches and purl the purl stitches.

Repeat last two rows 4 (2) 1 (4) 4 (13) 12 (12) more times, following appropriate rows of Raglan Lace chart and making raglan increases as established.

**You should finish with Row 20 of Raglan Lace pattern.**

There are now 235 (231) 227 (261) 265 (345) 341 (341) sts on the needle: 36 (36) 36 (40) 42 (52) 52 (52) sts for each front, 47 (45) 43 (51) 51 (71) 69 (69) sts for each sleeve and 69 (69) 69 (79) 79 (99) 99 (99) sts for back.

**Note: In the next rows you will continue with Back Lace pattern. After all rows of Back Lace pattern are completed repeat rows 1 – 20.**

Next Row 1 – raglan shaping: Knit to m A, M1R, sm A, p1, M1L, knit to 1 st before next m A, M1R, p1, sm A, M1Lp, pm B, work Row 1 of Back Lace pattern, pm B, M1Rp, sm A, p1, M1L, knit to 1 st before next m A, M1R, p1, sm A, M1L, knit to end. [8 sts increased]

Next Row 2 and all even rows (WS): Knit the knit stitches and purl the purl stitches.

Next Row 3 – raglan shaping: Knit to m A, M1R, sm A, p1, M1L, knit to 1 st before next m A, M1R, p1, sm A, M1L, p1, sm B, work appropriate row of Back Lace pattern, sm B, p1, M1R, sm A, p1, M1L, knit to 1 st before next m, M1R, p1, sm A, M1L, knit to end. [8 sts increased]

There are now 251 (247) 243 (277) 281 (361) 357 (357) sts on the needle: 38 (38) 38 (42) 44 (54) 54 (54) sts for each front, 51 (49) 47 (55) 55 (75) 73 (73) sts for each sleeve and 73 (73) 73 (83) 83 (103) 103 (103) sts for back.

**Sizes XXS (-) - (-) - (XL) - (-) only**

Next Row 5 – raglan shaping: Knit to m A, M1R, sm A, p1, M1L, knit to 1 st before next m A, M1R, p1, sm A, M1Lp, k1, p1, sm B, work appropriate row of Back Lace pattern, sm B, p1, k1, M1Rp, sm A, p1, M1L, knit to 1 st before next m, M1R, p1, sm A, M1L, knit to end. [8 sts increased]

**Sizes - (XS) S (M) L (-) 2XL (3XL) only**

Next Row 5 – raglan shaping: Knit to m A, M1R, sm A, p1, M1L, knit to 1 st before next m A, M1R, p1, sm A, M1Lp, (k1, p1) to m B, sm B, work appropriate row of Back Lace pattern, sm B, (p1, k1) to next m A, M1Rp, sm A, p1, M1L, knit to 1 st before next m, M1R, p1, sm A, M1L, knit to end. [8 sts increased]

Next Row 7 – raglan shaping: Knit to m A, M1R, sm A, p1, M1L, knit to 1 st before next m A, M1R, p1, sm A, M1L, (p1, k1) to 1 st before m B, p1, sm B, work appropriate row of Back Lace pattern, sm B, (p1, k1) to 1 st before next m A, p1, M1R, sm A, p1, M1L, knit to 1 st before next m, M1R, p1, sm A, M1L, knit to end. [8 sts increased]

Repeat last four rows – (1) 2 (2) 2 (-) 2 (4) more times, following appropriate rows of Back Lace chart and making raglan increases as established.

Next Row – raglan shaping: Knit to m A, M1R, sm A, p1, M1L, knit to 1 st before next m A, M1R, p1, sm A, M1Lp, (k1, p1) to m B, sm B, work appropriate row of Back Lace pattern, sm B, (p1, k1) to next m A, M1Rp, sm A, p1, M1L, knit to 1 st before next m, M1R, p1, sm A, M1L, knit to end. [8 sts increased]

There are now 259 (287) 299 (333) 337 (369) 413 (445) sts on the needle: 39 (43) 45 (49) 51 (55) 61 (65) sts for each front, 53 (59) 61 (69) 69 (77) 87 (95) sts for each sleeve and 75 (83) 87 (97) 97 (105) 117 (125) sts for back.

**Sizes - (-) - (-) - (XL) 2XL (3XL) only**

Next Row 1 – raglan shaping: Knit to m A, M1R, sm A,

p1, knit to 1 st before next m A, p1, sm A, M1L, (p1, k1) to 1 st before m B, p1, sm B, work appropriate Row of Back Lace pattern, sm B, (p1, k1) to 1 st before m A, p1, M1R, sm A, p1, knit to 1 st before next m, p1, sm A, M1L, knit to end. [4 sts increased]

Next Row 3 – raglan shaping: Knit to m A, M1R, sm A, p1, knit to 1 st before next m A, p1, sm A, M1Lp, (k1, p1) to m B, sm B, work appropriate row of Back Lace pattern, sm B, (p1, k1) to m A, M1Rp, sm A, p1, knit to 1 st before next m, p1, sm A, M1L, knit to end. [4 sts increased]

Finish with a WS row.

There are now – (–) – (–) – (377) 421 (453) sts on the needle: – (–) – (–) – (57) 63 (67) sts for each front, – (–) – (–) – (77) 87 (95) sts for each sleeve and – (–) – (–) – (109) 121 (129) sts for back.

### Separating body and sleeves

Row 1 (RS): Knit front sts, remove marker A, place sleeve sts on holder, sm A, cast on 5 (5) 7 (7) 9 (9) 9 (11) underarm sts, (p1, k1) to 1 st before m B, p1, sm B, work appropriate row of Back Lace pattern, sm B, (p1, k1) to 1 st before m A, p1, remove marker A, cast on 5 (5) 7 (7) 9 (9) 9 (11) underarm sts, place sleeve sts on holder, sm A, knit to end.

There are now 163 (179) 191 (209) 217 (241) 265 (285) sts on the needle.

Row 2 (WS): Purl to m A, sm A, (p1, k1) to m B, sm B, work appropriate row of Back Lace pattern, sm B, (k1, p1) to m A, sm A, purl to end.

Leave sleeve sts on holder to be worked later and continue working on remaining body sts as follows:

Next Row 1: Knit to m, sm A, (k1, p1) to m B, sm B, work appropriate row of Back Lace pattern, sm B, (p1, k1) to m A, sm A, knit to end.

Next Row 2 and all WS rows unless otherwise stated: Knit the knit stitches and purl the purl stitches.

Work in established pattern until piece measures approx. 36 (36) 36 (42) 42 (42) 42 (42) cm from underarm or approx. 5 cm before desired length, ending with a WS row. Make sure to finish with Row 20 of Back Lace pattern. Remove markers and change to 3.5 mm needles.

### Ribbing

Row 1 (RS): Knit to end.

Row 2 (WS): (P1, k1) to last st, p1.

Repeat last two rows 9 more times.

Bind off all sts knitwise.

### Sleeves

Slip held sleeve sts onto a 3.75 mm circular needle (to use magic loop method) or spread evenly over set of double pointed needles. Reattach yarn in the middle of the armhole.

With RS facing, pick up and knit 2 (2) 3 (3) 4 (4) 4 (5) sts from cast on sts at underarm section, knit sleeve sts, then pick up and knit remaining 3 (3) 4 (4) 5 (5) 5 (6) sts from cast on sts at underarm section, pm (beginning of rnd), and join to knit in rounds. There are now 58 (64) 68 (76) 78 (86) 96 (106) sts

on the needles.

Work in stockinette stitch for 11 rnds.

Sleeve shaping rnd: K1, k2tog, knit to last 3 sts, ssk, k1. [2 sts decreased]

Work a sleeve shaping rnd every 12 (10) 10 (10) 10 (8) 8 (8)th round 6 (8) 9 (9) 9 (11) 11 (11) more times.

There are now 44 (46) 48 (56) 58 (62) 72 (82) sts on the needles.

Continue in Stockinette stitch until sleeve measures approx. 40 cm from underarm or approx. 5 cm before desired length. Change to 3,5 mm needles.

### Ribbing

Rnd 1: Knit to end.

Rnd 2: (P1, k1) to end.

Repeat last two rnds 9 more times.

Bind off all sts knitwise.

### Button band

Begin at the top edge of the left front. With RS facing and using 3,5 mm circular needle, pick up and knit 89 (93) 97 (111) 113 (119) 125 (129) sts along the left front edge at a rate of approx. 2 sts per 3 rows.

Set up Row (WS): (P1, k1) to last st, p1.

Row 1 (RS): Knit to end.

Row 2 (WS): (P1, k1) to last st, p1.

Repeat last two rows 4 more times.

Bind off all sts knitwise.

### Buttonhole band

Begin at the hem edge of the right front and reattach yarn. With RS facing and using 3,5 mm circular needle, pick up and knit 89 (93) 97 (111) 113 (119) 125 (129) sts along the right front edge, at a rate of approx. 2 sts per 3 rows.

Set up Row (WS): (P1, k1) to last st, p1.

Row 1 (RS): Knit to end.

Row 2 (WS): (P1, k1) to last st, p1.

Repeat last two rows 1 more time.

Row 5 (RS): K6 (1) 5 (1) 3 (0) 6 (1), \*k3, k2tog, yo twice, ssk, k2\*. Repeat from \* to \* to last 2 sts, k2.



Row 6 (WS): (P1, k1) to last st, p1.

Row 7: Knit to end.

Row 8: (P1, k1) to last st, p1.

Repeat last two rows 1 more time.

Bind off all sts knitwise.

### Neckband

With WS facing, carefully remove all provisional cast-on sts and place live sts on a spare needle.

From the RS, beginning at the top of the right front and using 3,5 mm needles, pick up and knit 33 (37) 37 (37) 43 (43) 43 (43) sts across right front, knit 51 (59) 61 (69) 69 (75) 77 (77) sts from spare needle, and pick up and knit 33 (37) 37 (37) 43 (43) 43 (43) sts across left front.

There are now 117 (133) 135 (143) 155 (161) 163 (163) sts on the needle.

Set up Row (WS): (P1, k1) to last st, p1.

Row 1 (RS): Knit to end.

Row 2 (WS): (P1, k1) to last st, p1.

Repeat last two rows 1 more time.

Row 5 (RS): K3, k2tog, yo twice, ssk, k to end.

Row 6 (WS): (P1, k1) to last st, p1.

Row 7: Knit to end.

Row 8: (P1, k1) to last st, p1.

Repeat last two rows 1 more time.

Bind off all sts knitwise.

### Finishing

Weave in all ends and block cardigan. Sew on buttons.

**Lace pattern for raglan**

Row 1: \* Yo, k2, k2tog, k1, ssk, k2, yo, k1; rep. from \* to last 9 sts, yo, k2, k2tog, k1, ssk, k2, yo.

Row 2 and all WS rows: Purl.

Row 3: K1, \* yo, k2, k2tog, k1, ssk, k2, yo, k1; rep. from \* to end.

Row 5: K2, \* k1, yo, k2, s2tog-k1-p2sso, k2, yo, k2; rep. from \* to last st, k1.

Row 7: K3, \* k2, yo, k1, s2tog-k1-p2sso, k1, yo, k3; rep. from \* to last 2 sts, k2.

Row 9: K4, \* k3, yo, s2tog-k1-p2sso, yo, k4; rep. from \* to last 3 sts, k3.

Row 11: Yo, k2, k2tog, k1, \* ssk, k1, (k1, yo) twice, k2, k2tog, k1; rep. from \* to last 4 sts, ssk, k2, yo.

Row 13: K1, yo, k2, k2tog, k1, \* ssk, k1, (k1, yo) twice, k2, k2tog, k1; rep. from \* to last 5 sts, ssk, k2, yo, k1.

Row 15: K3, yo, k2, s2tog-k1-p2sso, \* k2, yo, k3, yo, k2, s2tog-k1-p2sso; rep. from \* to last 5 sts, k2, yo, k3.

Row 17: K5, yo, k1, s2tog-k1-p2sso, \* k1, yo, k5, yo, k1, s2tog-k1-p2sso; rep. from \* to last 6 sts, k1, yo, k5.

Row 19: K7, yo, s2tog-k1-p2sso, \* yo, k7, yo, s2tog-k1-p2sso; rep. from \* to last 7 sts, yo, k7.

**Lace pattern for back**

Row 1: \* Yo, k2, k2tog, k1, ssk, k2, yo, k1; rep. from \* to last 9 sts, yo, k2, k2tog, k1, ssk, k2, yo.

Row 2 and all WS rows: Purl.

Row 3: As Row 1.

Row 5: \* K1, yo, k2, s2tog-k1-p2sso, k2, yo, k2; rep. from \* to last 9 sts, k1, yo, k2, s2tog-k1-p2sso, k2, yo, k1.

Row 7: \* K2, yo, k1, s2tog-k1-p2sso, k1, yo, k3; rep. from \* to last 9 sts, k2, yo, k1, s2tog-k1-p2sso, k1, yo, k2.

Row 9: \* K3, yo, s2tog-k1-p2sso, yo, k4; rep. from \* to last 9 sts, k3, yo, s2tog-k1-p2sso, yo, k3.

Row 11: \*Ssk, k1, [k1, yo] twice, k2, k2tog, k1; rep. from \* to to last 9 sts, ssk, k1, [k1, yo] twice, k2, k2tog.

Row 13: As Row 11.

Row 15: Ssk, (k1, yo, k2) twice, s2tog-k1-p2sso, \* k1, (k1, yo, k2) twice, s2tog-k1-p2sso; rep. from \* to last 8 sts; k2, yo, k3, yo, k1, k2tog.

Row 17: Ssk, yo, k5, yo, k1, s2tog-k1-p2sso, \* k1, yo, k5, yo, k1, s2tog-k1-p2sso; rep. from \* to last 8 sts; k1, yo, k5, yo, k2tog.

Row 19: Yo, k2tog, k6, yo, s2tog-k1-p2sso, \* yo, k7, yo, s2tog-k1-p2sso; rep. from \* to last 8 sts; yo, k6, ssk, yo.