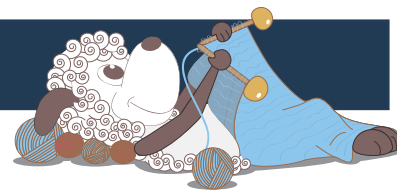


Idun - a girls' dress



Design: Signe Strømgaard

The Idun dress is named after a little girl, known by the designer, who has eyes filled with sparkle and mischief. And also, after the Norse goddess Idun and her golden apples, that give the gods eternal life.

The small two coloured apples on the dress create a perfect opportunity to play with colours without it becoming a very time consuming and technically challenging project.

2nd English edition - October 2019 © Filcolana A/S

Materials

Colour A: 150 (150) 200 (250) g Arwetta Classic from Filcolana in colour 236 (Red Clover)

Colour B: 50 g Arwetta Classic from Filcolana in colour 334 (Light Blush)

Colour C: 50 g Arwetta Classic from Filcolana in colour 352 (Red Squirrel)

Circular needle 2½ mm, 60 cm long

Circular needle 3 mm, 60 and 80 cm long

Dpns 3 mm

Crochet hook, 3 mm

2 markers or scraps of yarn

2 stitch holders

1 small button (exact size is up to you)

Sizes

74-80/1 year (86-92/2 years) 98-104/4 years (110-116/6 years).

Measurements

Body chest: 52 (54) 56 (62) cm

Dress chest: 56 (60 (65) 70 cm

Bottom width: 80 (80) 92 (98) cm

Length: 37 (42) 45 (50) cm



Gauge

27 sts og 36 rows in stockinette stitch on 3 mm needle = 10 x 10 cm.

Special abbreviations

M1 (increase): Lift the chain between 2 sts onto the left needle and knit it through the back loop (knitwise or purlwise as appropriate).

k2tog: Knit 2 sts together knitwise. This makes a right leaning decrease.

Special techniques

I-cord cast-on: Cast on 3 sts on a circular needle, move these 3 sts from right to left hand needle, * first knit into the front loop of the first sts, then into the back loop of the same stitch before slipping it off the needle, knit the next 2 sts. Move the first 3 sts back onto the left needle *. Continue in this way repeating the instructions from * to * until you have 2 more sts on the needle than what you need for the cast on. k2tog, k1. Move the last 2 sts to the left needle again, k2tog.

I-cord bind-off: Cast on 2 sts in front of the ones you will be binding off. * K2, k2tog though the back loops. Move the 3 sts you've just knit back on the left needle. Repeat from * to * to the end of the row or round. Break the yarn and pull it through the last 3 sts on the needle.

Short rows: When you turn in the middle of a row to make a short row, it is important to do something to avoid ending up with a hole at the turning point. The most common method is to wrap the working yarn around the next stitch on the needle before turning the work, thus: Hold the yarn behind the needle, slip the next stitch from left to right hand needle, bring the yarn to the front of the work and slip the stitch back on the left needle. This creates a loop around the next stitch, which will eliminate the hole between the last knit and the first unknit stitch. Now turn the work and continue according to your pattern.

Construction

The dress is knit seamlessly from the top down. It has a round yoke with a simple colourwork pattern. This colourwork pattern is repeated at the hem of the dress. Neckline and sleeve edge is finished with a simple i-cord bind off, and the hem at the bottom of the dress is finished with a folded edge.

Body

Cast on 84 (90) 96 (102) sts on the 2½ mm circular needle using the i-cord cast-on a Colour A yarn. Change to the 3 mm circular needle, and knit the following short rows:

- Row 1: Knit 21 (22) 24 (26) sts, turn.
- Row 2: Purl to the end of the row.
- Row 3: Knit 17 (18) 20 (22) sts, turn.
- Row 4: Purl to the end of the row.
- Row 5: Knit to the end of the row.
- Row 6: Purl 21 (22) 24 (26) sts, turn.
- Row 7: Knit to the end of the row.

Chart 1

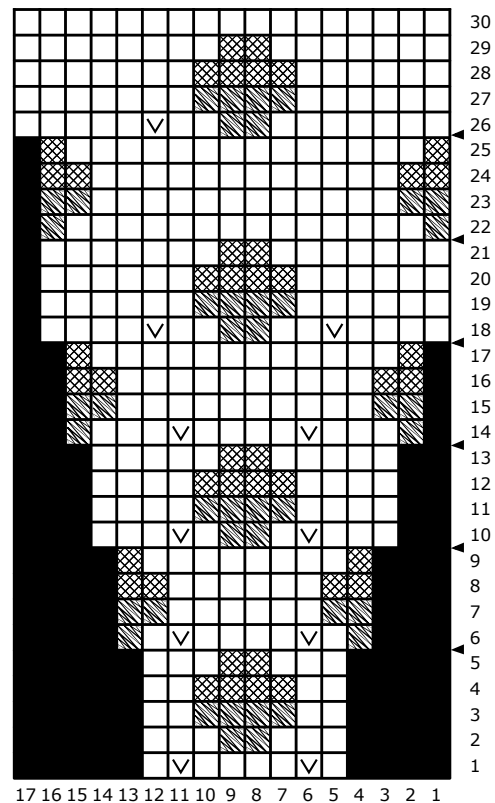
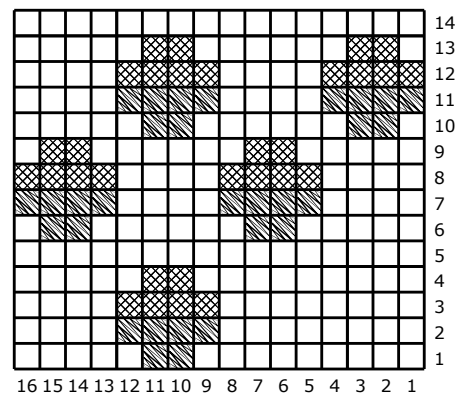


Chart 2



- Colour A
- Colour B
- Colour C
- No stitch
- M1

Row 8: Strik 17 (18) 20 (22) sts vrang, turn.

Row 9: Knit to the end of the row.

Join to a round and work chart 1 to row 21 (17) 13 (5). Now work 1 round in Colour A, before continuing the chart. Repeat this for next row marked with an arrow along the right side of chart.

Then knit 2 rounds with Colour A at each subsequent arrow marked row of chart (a total of 0 (1) 2 (4) times), before continuing the chart.

When the chart has been knit, break Colour B and Colour C and continue with Colour A until work measures 9 (11) 12 (13) cm. There are now a total of 238 (255) 272 (289) sts on the needle.

Divide the work into body and sleeves thus:

Knit 34 (37) 39 (41) sts, move 50 (54) 58 (62) sts onto a stitch holder, cast on 3 (4) 5 (6) new sts, place marker, cast on 3 (4) 5 (6) new sts, knit 69 (73) 78 (83) sts, move 50 (54) 58 (62) sts onto a stitch holder, cast on 3 (4) 5 (6) new sts, place marker, cast on 3 (4) 5 (6) new sts. Knit to first marker. This is now the beginning of the round. There are now a total of 150 (163) 176 (189) sts on the needle.

Knit the body sts in the round until work measures 4 (5) 5 (6) cm measured from the armhole down.

Round 1: * K2, M1, knit to 2 sts before marker, M1, k2 *, slip marker; repeat from * to * once more.

Round 2 - 6: Knit all sts.

Repeat these 6 rounds a total of 9 (9) 11 (13) times = 186 (199) 220 (241) sts.

Then knit Round 1 again, but with 10 rows of plain knitting in between. Repeat these a total of 4 (3) 5 (4) times = 202 (211) 240 (257) m.

Continue knitting straight until work measures 32 (36) 39 (45) cm from the neck edge measured from the centre front of the body.

Next round: For the middle 3 sizes increase 6 (13) 0 sts across round. for the largest size decrease 1 st = 208 (224) 240 (256) sts on needle.

Knit 3 rounds of Colour A.

Work chart 2.

When all of Chart 2 has been worked, break Colour B and Colour C and knit 2 rounds with Colour A.

Then purl 1 round with Colour A. Break Colour A and knit 13 rounds straight with Colour C.

Bind off all sts.

Sleeves

Move sleeve sts for one sleeve onto dpns and pick up and knit 3 (4) 5 (6) sts from the newly cast on sts under the arm using Colour A, place marker and pick up and knit 3 (4) 5 (6) more sts. Knit to marker = 56 (62) 68 (74) sts on the needle.

Work 3 (4) 5 (6) rounds in Colour A.

Next round: * K1, k2tog *; repeat from * to * until there are 2 m sts left of round, k2.

Bind off all sts using the i-cord bind off.

Knit the second sleeve in the same way.



Finishing

Fold the bottom hem to the wrong side folding at the purl row and sew it to the wrong side of the dress using stretchy stitches and Colour A.

Using the end of yarn coming from the cast on at the back of the neck, crochet a button loop with chain sts in a size that fits the size of your button. Sew the button on across from the loop. Weave in the ends. Wash the dress, stretch it gently to shape and let it dry lying flat.