

# Dina - a large and beautiful shawl



Design: Karen Skriver Lauger

*A large and gorgeous shawl worked in a lace pattern which radiates out from the floral lace motif at the centre. The shawl can be work over a lovely dress for a party – or you can wrap it around you when taking an evening walk while the dew is falling.*

3<sup>rd</sup> English edition - October 2019 © Filcolana A/S  
English translation: Signe Strømgaard

## Materials

250 g of Saga by Filcolana in colour 303 (Sea Glass)  
175 g Tilia by Filcolana in colour 330 (Ash)  
5 mm circular needle, 100 cm  
Stitch markers

## Sizes

One size

## Measurements

Length along top edge (wings): 192 cm  
Height along spine: 100 cm

## Gauge

17 sts and 25 rows in stockinette stitch and lace pattern on a 5 mm needle = 10 x 10 cm.

## Special abbreviations

ssk (decrease): slip 2 sts knit-wise one after the other, slip them back onto the left needle and knit them together through the back loop.

S1 wyif: Slip 1 stitch purl-wise with the yarn to the front.



**Directions for knitting**

The shawl is worked down and out from the centre of the neck. The shawl has 4 sections, each in the same pattern. The sections are divided by markers. All increases are worked on RS rows.

The three lace patterns are shown in charts. The shawl is worked in one strand of Tilia and one strand of New Zealand lammeuld throughout.

**Charts**

The charts show the pattern from the RS (all sts are purled on WS rows). The charts are read from the bottom up and from right to left on RS rows.

**Shawl**

Cast 9 sts with one strand of each yarn held together on a 5 mm needle.

**Row 1 (RS):** Sl1 wyif, \*yarn over, k1\*, repeat from \* a total of 8 times.

**Row 2 (WS):** Sl1 wyif, knit to the last stitch, k1.

**Row 3:** Sl1 wyif, \*yarn over, k3, yarn over, place marker, k1\*, work from \* to \* a total of 3 times, yarn over, k3, yarn over, k1.

**Row 4:** Sl1 wyif, knit to the last stitch, k1.

There are now 25 sts on the needle and 3 markers separating the four sections of the shawl. Now work lace pattern from chart.

First work the lace pattern from chart A:

**Row 1A (RS):** Sl1 wyif, \*yarn over, work chart A to marker, yarn over, slip marker, k1\*, work from \* to \* a total of 3 times, yarn over, work chart A to last stitch, yarn over, k1.

**Row 2A (WS):** Sl1 wyif, knit to the last stitch, k1.

Work all 44 rows of chart A (remembering that only RS rows are shown in the chart).

There are now 201 sts on the needle.

Then work the lace pattern from chart B:

**Row 1B (RS):** Sl1 wyif, \*yarn over, work chart B to marker (repeat sts in the marked box), yarn over, slip marker, k1\*, work from \* to \* a total of 3 times, yarn over, work chart B to last stitch, yarn over, k1.

**Row 2B (WS):** Sl1 wyif, knit to the last stitch, k1.

Work the first 22 rows of chart B once. There are now 289 sts on the needle.

Then work row 23-46 of chart B a total of 3 times.

There are now 577 sts on the needle.

Then work the lace pattern from chart C:

**Row 1C (RS):** Sl1 wyif, \*yarn over, work chart C to marker (repeat sts in the marked box), yarn over, slip marker, k1\*, work from \* to \* a total of 3 times, yarn over, work chart C to last stitch, yarn over, k1.

**Row 2C (WS):** Sl1 wyif, knit to the last stitch, k1.

Work all 31 rows of chart C – noting that the last row of the chart is a RS row.

Bind off all 705 sts knit-wise on the next (WS) row. Be careful not to bind off too tightly.

**Finishing**

Weave in all ends. Gently wash the finished shawl and block it so the lace patterns open up. Let it dry lying flat.



Chart A

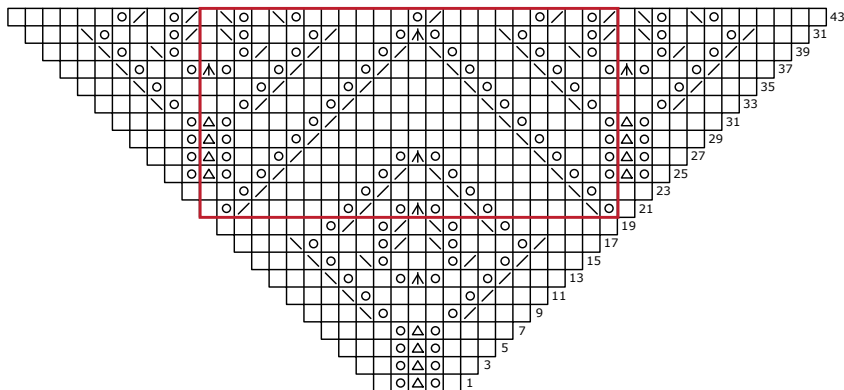


Chart B

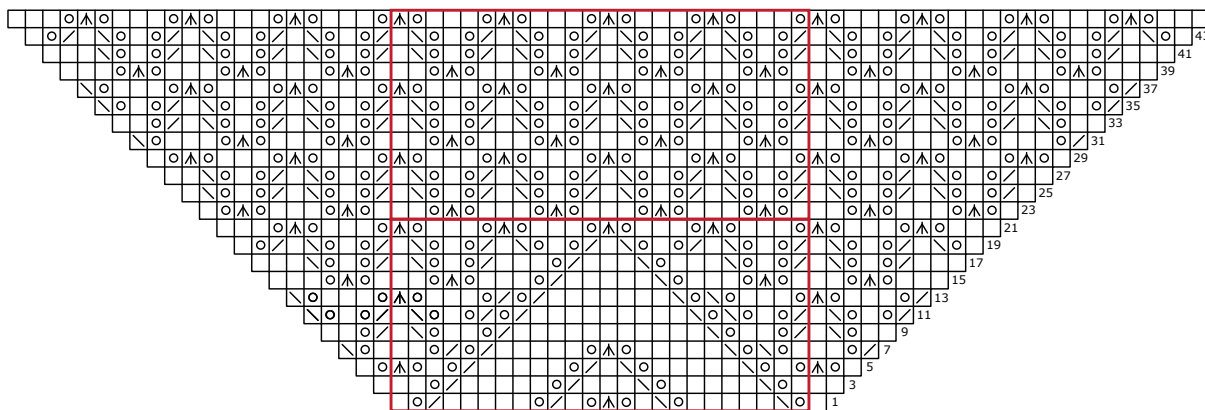
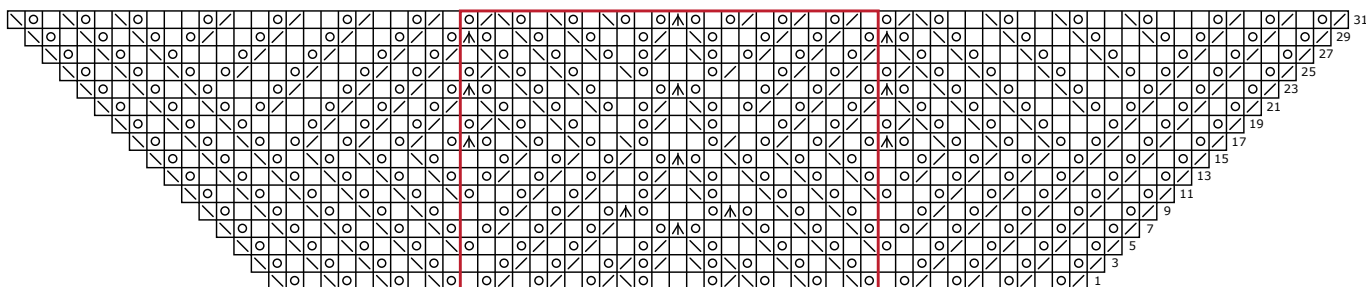


Chart C



- knit on the RS, purl on the WS
- yarn over
- k2tog
- ssk
- sl1, k2tog, pass slipped stitch over
- slip 2 sts together as if knitting them together, k1, pass the 2 slipped stitches over the knitted stitch