

# filcolana

OBSESSED WITH QUALITY YARN SINCE 1952



Design: Gitte Juhler  
Pattern: Sanne Bjerregaard

## Neptun

4th edition - September 2021 © filcolana  
English translation: June Thomsen

**According to Roman mythology, Neptune is the god of the sea, and he rules his kingdom with trident in hand. The vertical lines of the trident have been an inspiration to this very graphic design, which blends beautifully with the soft expression of the yarn.**

**Neptune is knitted in the Fair Isle technique and the pattern contains - among other things - an interesting technique for catching floats on the wrong side as you go.**

### SIZES

S (M) L (XL)

### MEASUREMENTS

Chest circumference: 96 (107) 117 (128) cm

Length: 56 (58) 59 (63) cm

Sleeve length: 45 (45) 46 (47) cm

Add approx. 8-10 cm to your bust measurement when choosing your size.

### GAUGE

15 sts and 19 rows in 2 coloured stockinette on 7 mm needles = 10 x 10 cm.

Needle sizes are for guidance only. If you have the accurate stitch count horizontally but not vertically it might help to change to needles in a different material, e.g. change from metal to wood or vice versa.

**Note:** It might be necessary to change needles when knitting in multiple colours compared to knitting in a single colour. Measure your gauge continuously throughout work in order to adjust your needle size if needed, when changing between the techniques.

### MATERIALS

Yarn from Filcolana

**Colour A:**

250 (300) 350 (400) g **Peruvian B** cl. 136 (Mustard) and 75 (75) 100 (100) g **Tilia** cl. 136 (Mustard)

**Colour B:**

250 (300) 350 (400) g **Peruvian** cl. 318 (Ballerina) and 75 (75) 100 (100) g **Tilia** cl. 321 (Sakura)

One strand of Tilia and one strand of Peruvian are held together throughout work.

**Circular needles** 5 mm and 7 mm, 40, 60, and 80 cm

**Doublepointed needles** 5 mm and 7 mm

**8 stitch markers** (1 blue, 1 red, 1 green, 1 black, and 4 yellow). The colours are subordinate as long as you can tell the difference between them.

**2 stitch holders** (or waste yarn) for the resting sts.



---

# Technical

---

## SPECIAL ABBREVIATIONS

### M1L

Right slanted increase. From the front, lift the horizontal strand between stitches with the left needle and knit through the back loop (1 st increase).

### M1R

Left slanted increase. From the back, lift the horizontal strand between the two stitches with the left needle and knit through the front loop (1 st increase).

## SPECIAL TECHNIQUES

### German short rows (GSR)

Knit to where the short row shall be. Turn work and slip st onto right needle with yarn in front. Tug the yarn up and over the needle. This creates a double stitch. Continue working the row as instructed in the pattern. On next row work the double sts together as either k2tog or p2tog depending on what the stitches indicate.

This technique is called German short rows.

### Fair Isle

When knitting with 2 colours at the same time, one colour will always be more dominant than the other in the finished work. Which colour is the dominant one depends on the tightness you hold each yarn with, i.e. how you hold the yarn on your fingers. Most often the yarn closest towards you becomes the most dominant one.

In this pattern the dominant colour changes over a single round, the chart indicates which colour should be the dominant one.

### Ladder-back jacquard

This technique is a way to handle longer floats on the non-working yarn when knitting Fair Isle patterns. This method forms ladders on the wrong side of the work and keep the long floats in place.

**Ladder-back jacquard set-up st:** The set-up st is the first st in the ladder. Knit to where the set-up st will be, bring your working yarn to the front, lift right leg of the row below up onto the left needle (like a lifted increase), work the st with the non-working yarn (i.e. the colour that floats on the wrong side), bring working yarn back again, knit 1st st on left needle with your

working yarn. The non-working yarn st is visible between the working yarn sts, it will later be invisible.

**How to knit the ladder-back st:** The ladder sts lie as extra sts on the round and are knit as follows: Knit to the ladder st, bring your working yarn forward, knit the ladder st with the non-working yarn, bring the working yarn back again, and continue knitting.

**How to finish the ladder-back:** Knit to 1 st before the ladder, slip 1 st knitwise, slip 1 st knitwise, and slip them back onto left needle, knit the 2 sts together through back loop (ssk). This will make the ladder st invisible again.





---

# Workflow

---

Neptun is knit top down.

After separating the body and the sleeves, each piece is finished separately.

When knitting, follow both the written instructions and the chart.

The pattern is knitted with Fair Isle technique. At the lower part of the body the distance between the colour changes is significant, therefore this part is knitted using ladder-back jacquard technique in order not to make the long floats on the wrong side too loose or too tight.





---

# Pattern

---

## NECKLINE

With colour A and 5 mm circular needles cast on 72 (72) 88 (88) sts. Join knitting and be careful that the sts don't twist around needle when you join in the round.

**1st round:** K1, \*, p1, k3\*, repeat from \* to \* to last 2 sts, k2.

Repeat this round until work measures 14 cm.

## YOKE

Change to 7 mm circular needles and divide work as follows:

**Next round:** K1 (raglan st) and mark this st with the black marker (beginning of round), k4 (right sleeve), k1 and mark this with a yellow marker (middle of sleeve), k4, k1 and mark this st with a red marker (raglan st), knit 12 (12) 16 (16) sts (front), k1 and mark this with a yellow marker (front middle), knit 12 (12) 16 (16) sts (front), k and mark this st with a green marker (raglan st), k4 (left sleeve), k1 and mark this st with a yellow marker (middle of sleeve), k4, k1 and mark this st with a blue marker (raglan st), knit 12 (12) 16 (16) sts (back), k1 and mark this st with a yellow marker (middle of the back), knit 12 (12) 16 (16) sts.

Now increases on both sides of the raglan sts begin, and at the same time German short rows are knit to heighten the neck. Knit as follows:

**1st German short row:** Knit to 3 sts after the red marker, turn work.

**2nd German short row (WS):** GSR, purl to 3 sts after the green marker, turn work.

**3rd German short row:** GSR, knit to the green marker, M1R, k1, M1L, knit to the blue marker, M1R, k1, M1L, knit to the black marker, M1R, k1, M1L, knit to the red marker, M1R, k1, M1L, knit to the German short row st from the previous row, knit the double sts together, k3, turn work.

**4th German short row:** GSR, purl to last German short row st from previous row, purl the double sts together, p3, turn work.

Repeat rows 3 and 4 an additional 0 (1) 1 (2) times, until you have made a total of 2 (3) 3 (4) short rows in each side and you have 13 (7) 15 (9) sts between the short row sts.

**5th German short row:** Knit as 3rd row to the German short row st from previous row, knit the double sts together, do not turn work.

You have now knitted all the short rows.

Now knit in the round again as follows (note, the colours of the stitch markers are no longer specified):

**1st round:** Knit to beginning of round marker.

**2nd round:** \*K1 (raglan st), M1L, knit to next marker, M1R\*, repeat from \* to \* over all sts.

Repeat these 2 rounds until you have 35 (35) 43 (45) sts on front and back respectively and 19 (19) 19 (21) sts on each sleeve. Last round is an increase round.

Now join colour B to work and follow the charts. At the same time continue increases on every 2nd round as before.

## How to read the chart

**Note!** The chart is only showing one side. At beginning of round read the chart from right to left, till the marked middle st, knit the st in the given colour, and follow the same row of the chart once more, this time reading it from left to right. The middle sts are only knitted once on each round.

**Note:** The raglan sts are knit in colour A throughout work, the increases are knit in the colour that fits the pattern. The chart indicates which colour is the dominant colour.

**1st chart round:** \*k1 (raglan st) with colour A, follow chart B to next raglan st, k1 with colour A, follow chart A to next raglan st\* repeat from \* to \* over entire round.

**2nd chart round:** \*k1 with colour A, M1L with colour A, follow chart B to next raglan st, M1R med colour A, k1 with colour A, M1L with colour B, follow chart A to next raglan st, M1R with colour B\*, repeat from \* to \* over entire round.

Repeat these 2 rounds and follow the charts while knitting the increases in the colour the pattern indicates.



Continue until you have made a total of 19 (22) 22 (24) increases.

You now have 63 (69) 77 (81) sts on the front and back respectively, and 47 (53) 53 (57) sts on each sleeve = 224 (248) 264 (280) sts in total.

Now body and sleeves are separated and the body is finished like this:

### Only sizes S, M, and L

**Next round:** \*K1 (raglan st) with colour A, place all sleeve sts to next marker on a stitch holder, use both yarns and cast on 7 (9) 9 sts like this: 1 (2) 2 sts with colour A, 1 (1) 1 st with colour B, 3 sts with colour A. Mark the middle of these 3 sts with a yellow marker (side marker), 1 st with colour B and 1 (2) 2 sts with colour A, k1 (raglan st), follow chart A to next raglan st \*, repeat from \* to \*.

Place waste yarn or a safety pin at the first side marker to indicate the beginning of the round.

### Only size XL

**Next round:** \*K1 (raglan st) with colour A, place all sleeve sts to next marker on a stitch holder, use both yarns and cast on 13 new sts like this: 1 st with colour B, 3 sts with colour A, 1 st with colour B, 3 sts with colour A, mark the middle of those 3 sts with a yellow marker (side marker), 1 st with colour B, 3 sts with colour A, 1 st with colour B, k1 (raglan st), follow chart A to next raglan st \*, repeat from \* to \*. Place waste yarn or a safety pin at the first side marker to indicate the beginning of the round.

### All sizes

You now have 144 (160) 176 (192) sts on the body. Continue following chart A, until you have knit round 50 (52) 50 (53).

From this point the chart is knit using ladder-back jacquard (see special techniques) to avoid having too long floats on the wrong side.

Now continue chart A but note that the first st is a ladder-back set-up st. Finish chart A. On next round continue with ladder-back sts in colour B.

On last row finish the ladder-back sts as described (see special techniques).

### EDGE

Break colour A and change to 5 mm needles.

**Next round:** k2, \*p1, k3\*, repeat from \* to \* to the last 2 sts, p1, k1.

Repeat this round until the edge measures 5 cm. Bind off all sts.

### SLEEVES

With 7 mm needles pick up sts in the armhole, begin from the bottom of the armhole and knit as follows:

### Only sizes S, M, and L

Pick up 1 st with colour B and mark this st with a yellow marker, pick up 1 more st with colour B, 1 st with colour A, and 2 (3) 3 sts with colour B, knit the resting sleeve sts onto the needle, pick up 2 (3) 3 sts with colour B, 1 st with colour A, and 1 st with colour B = 56 (64) 64 sts.

### Only size XL

Pick up 1 st with colour B and mark this st with a yellow marker, pick up 1 more st with colour B, 1 st with colour A, 3 sts with colour B, 1 st with colour A, and 1 st with colour B, knit the resting sleeve sts onto the needle, pick up 1 st in colour B, 1 st in colour A, 3 sts with colour B, 1 st with colour A, and 1 st with colour B = 72 sts.

### All sizes

Now, knit chart B. The chart is read as before; from right to left to the middle st, work the middle st, and read the same line from left to right over the entire round. Knit the first st of the round (marked with M) only once. Complete chart B and break colour B.

**Next round (decrease round):** K2tog over all sts = 28 (32) 32 (36) sts.

### SLEEVE EDGE

Change to 5 mm circular needles.

**Next round:** \*p1, k3\*, repeat from \* to \* over all sts. Repeat this round until the edge measures 5 cm. Bind off all sts.

### FINISHING

Fold neckline inwards and sew the edge onto the wrong side with not too tight overcasting stitches.

Weave in all loose ends. If there are small holes at the sides of the armhole mend these from the wrong side.

Wash blouse according to washing instructions on the labels, lay the blouse flat to dry on a towel and if necessary pull gently to even out the colour changes.



Chart A - size S

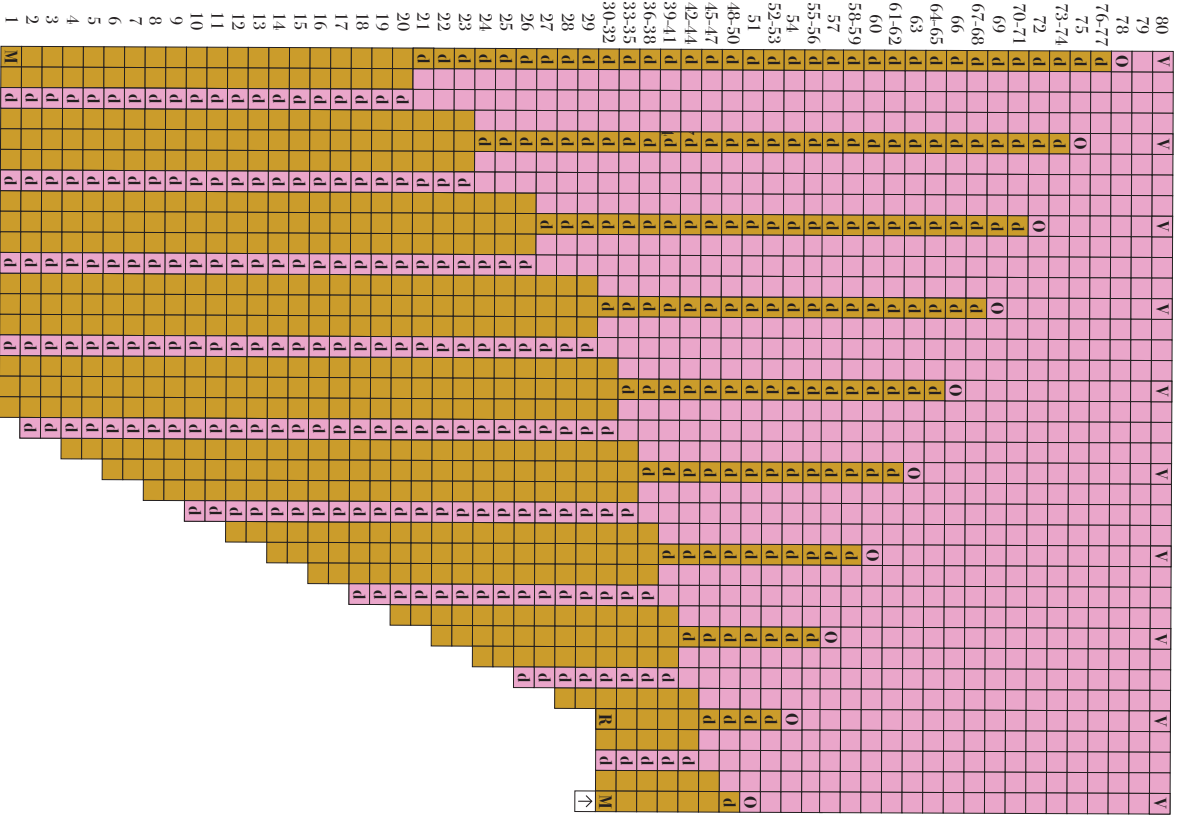
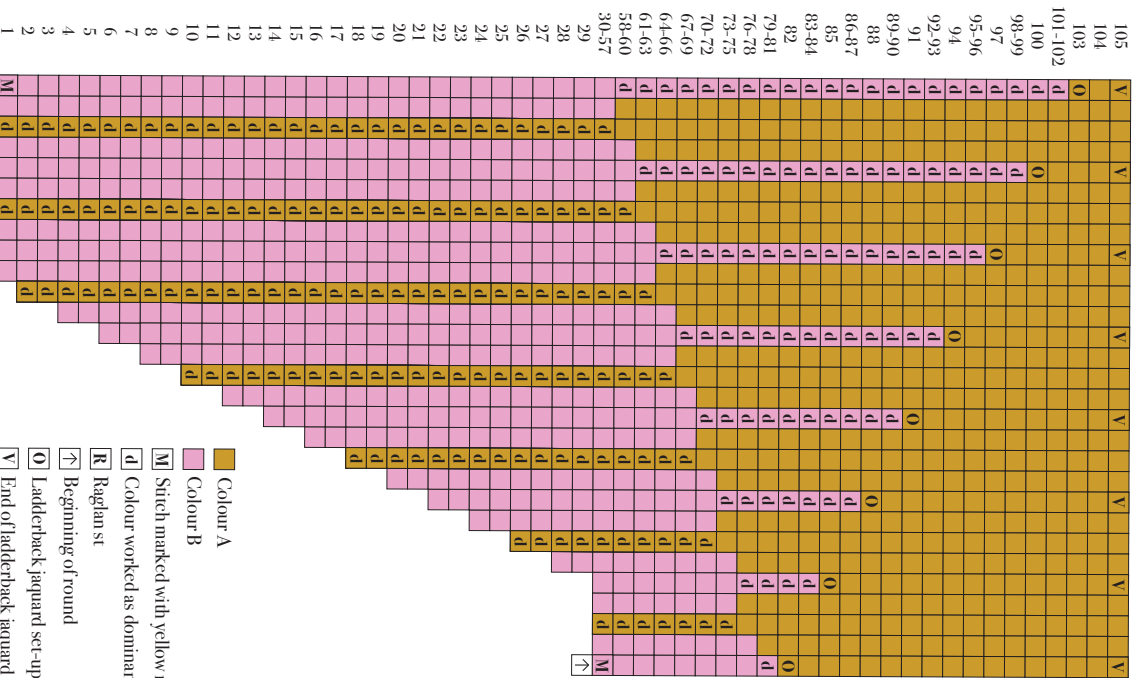


Chart B - size S



- Colour A
- Colour B
- Stitch marked with yellow marker (center st)
- Colour worked as dominant
- Raglan st
- Beginning of round
- Ladderback jaquard set-up stitch (see special techniques)
- End of ladderback jaquard (see special techniques)



Chart A - size M

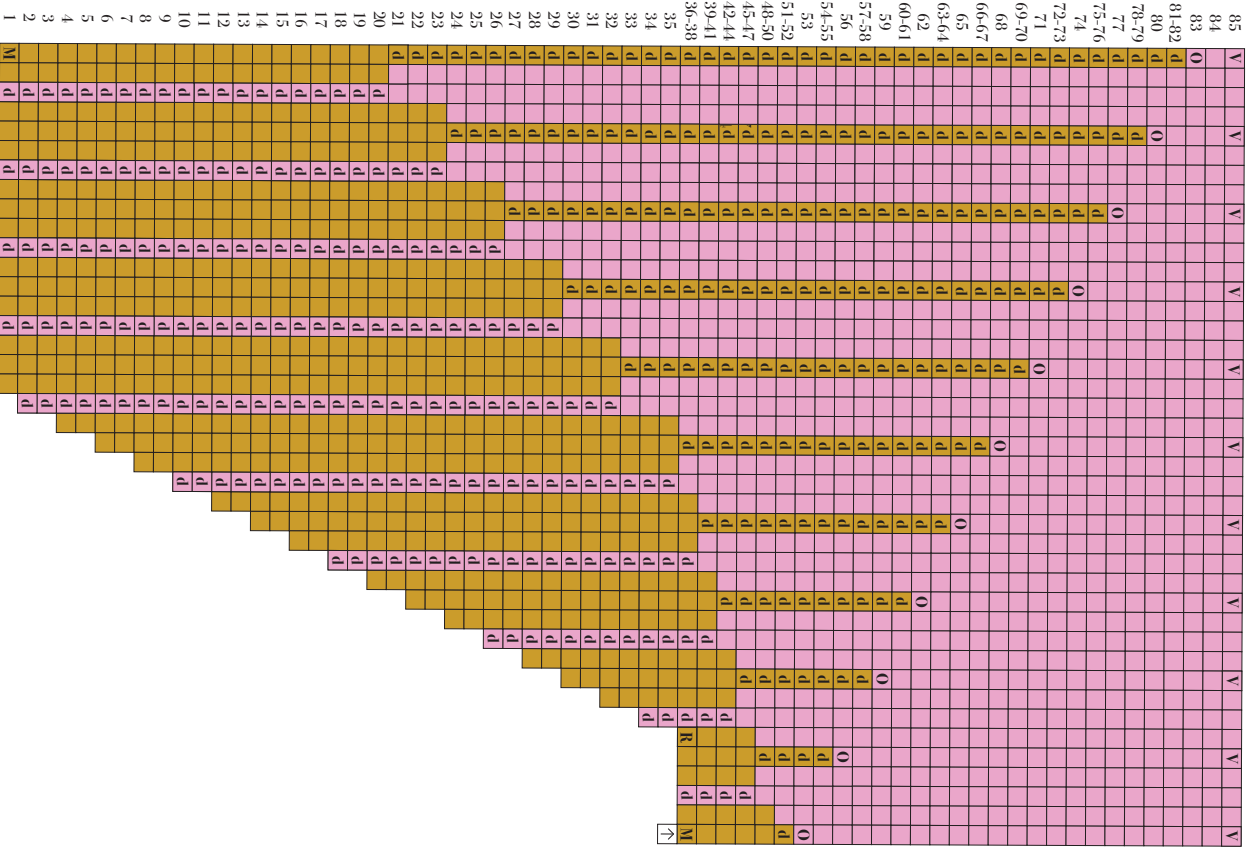
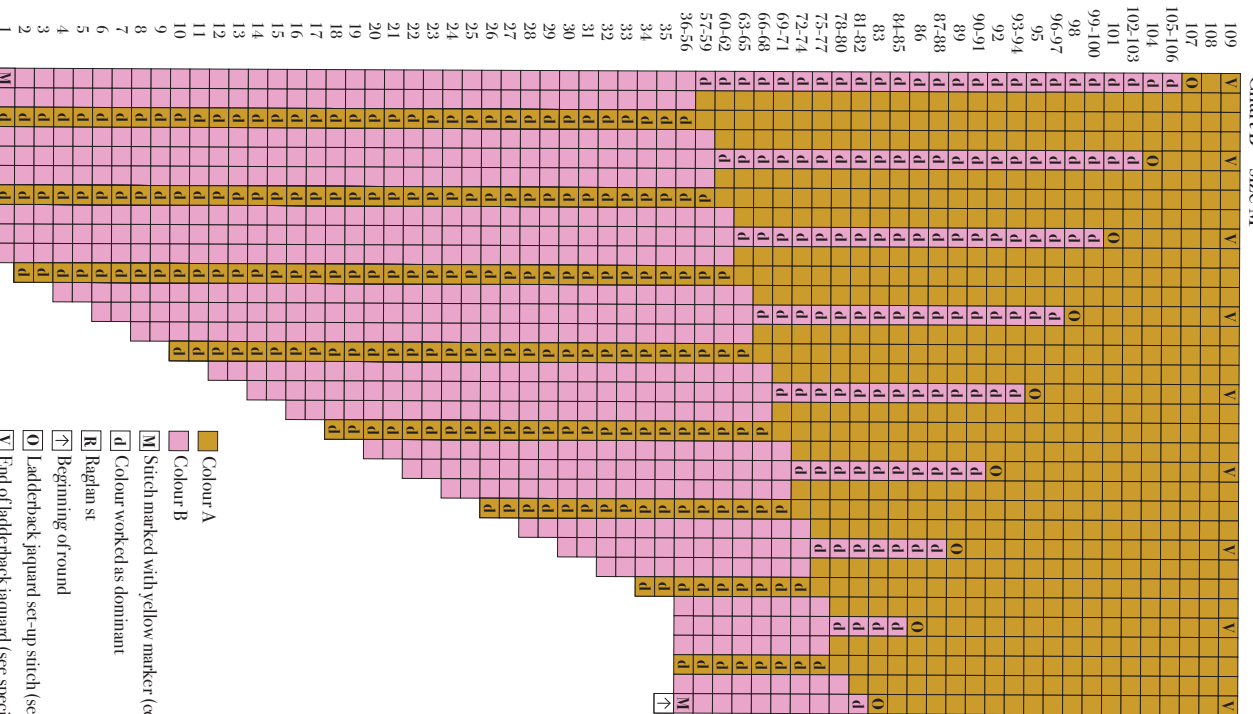


Chart B - size M



- Colour A
- Colour B
- Stitch marked with yellow marker (center st)
- Colour worked as dominant
- R Raglan st
- ↑ Beginning of round
- O Ladderback jacquard set-up stitch (see special techniques)
- V End of ladderback jacquard (see special techniques)







Chart A - size XL

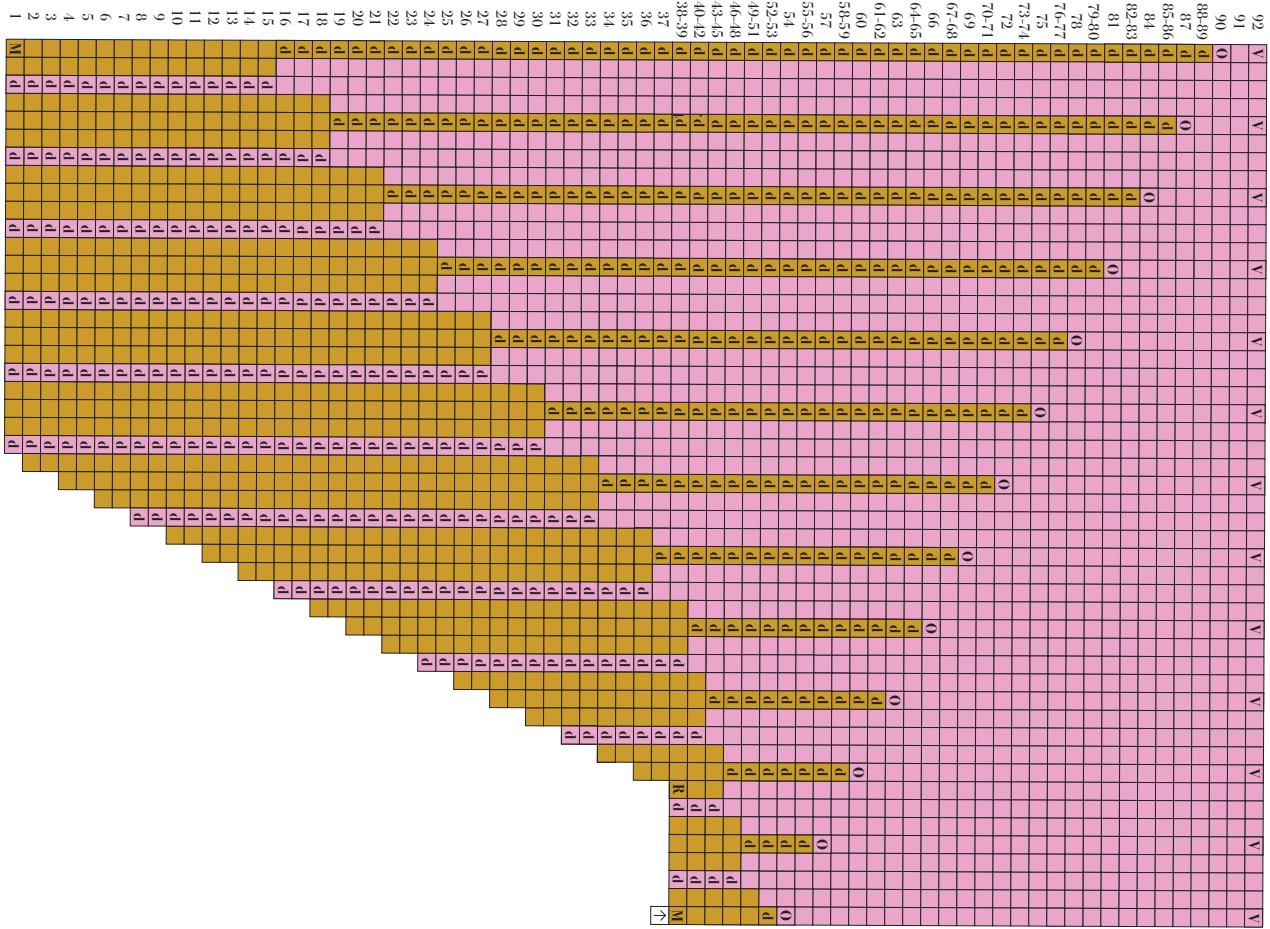
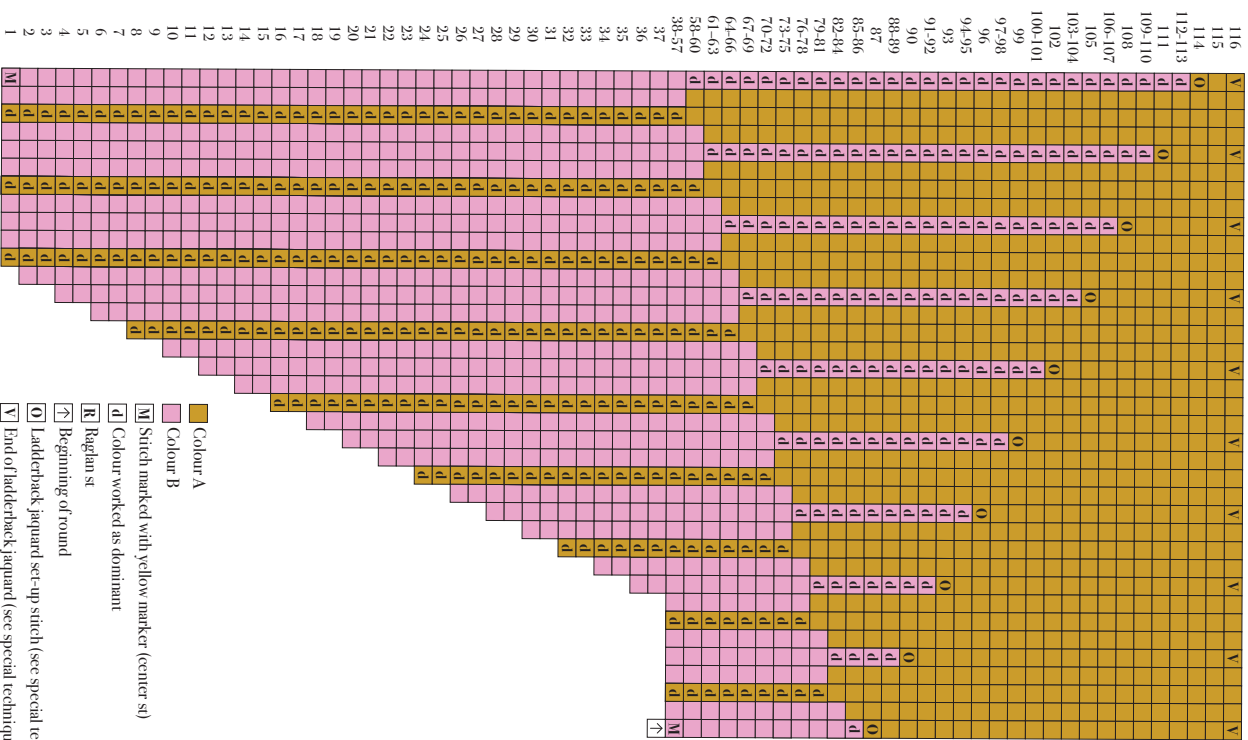


Chart B - size XL



- Colour A
- Colour B
- Stitch marked with yellow marker (center st)
- Colour worked as dominant
- Raglan st
- Beginning of round
- Ladderback jacquard set-up stitch (see special techniques)
- End of ladderback jacquard (see special techniques)