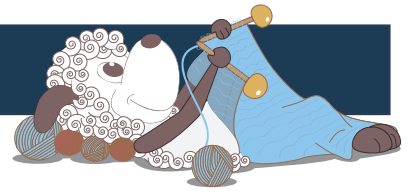


Ørestad - a gorgeous baby blanket



Design: Sanne Bjerregaard

Ørestad is a newly developed part of Copenhagen, located on the island of Amager. Ørestad is made up of residential buildings in many different creative shapes and colours. This inspired the designer to create this blanket in a technique reminiscent of the quilting pattern called "Log Cabin", where new sections are added along the sides of the existing ones, working from the centre out. The Ørestad blanket is worked in sections of varying sizes, which makes it a fun knit. The designer has lived on the island of Amager, where part of Copenhagen is located, for most of her life, so the inspiration for her designs for the Copenhagen collection naturally come from the places on Amager that she loves the most.

2nd English edition - November 2020 © Filcolana A/S
English translation: Signe Strømgaard

Materials

Arwetta Classic by Filcolana:

Colour A: 57 g in colour 270 (Midnight Blue)

Colour B: 76 g in colour 136 (Mustard)

Colour C: 42 g in colour 135 (Straw)

Colour D: 100 g in colour 352 (Red Squirrel)

Colour E: 76 g in colour 192 (Steel Blue)

Colour F: 85 g in colour 340 (Ice Blue)

Colour G: 100 g in colour 234 (Slate)

- the yarn is held double throughout

4 mm circular needle, 80 cm (multiple circular needles in the same size for the edge)

Note for yarn

1 square in the chart uses 1,88 g of the yarn



Measurements

approx. 78 x 90 cm (after wash)

Gauge

20 sts and 40 p in garter stitch on 4 mm needles with 2 strands of yarn held together = 10 x 10 cm.

1 chart square = 10 sts x 20 rows (10 garter ridges)

Directions for knitting

The blanket is constructed in modules, the stitches for each is picked up and knitted along the edge of the previous module, then knitted out from there.

When picking up and knitting stitches, the same number of sts are picked up as there are stitches or garter ridges along the edge + 1 added stitch at each end.

The blanket can be worked entirely from the chart, where each square equals 10 sts and 20 rows, but with 1 stitch added at both ends of each module.

Start with module 1 and follow the numbers, while knitting in the direction of the arrows.

Special techniques

Edge sts on modules: Slip the first stitch knit-wise and purl the last stitch on every row.

Picking up and knitting stitches: The stitches are always picked up and knitted from the RS along one of the sides of the previous module(s) by inserting the needle under the chain of the stitch of edge stitch.

Intarsia: The modules 9a+b, 10a+b+c and 11a+b, are worked simultaneously using the intarsia technique. When changing colours the yarns are crossed so the "old" yarn goes over the "new" yarn.

Blanket

Module 1

Cast on 32 sts on a 4 mm circular needle in colour A and work 20 garter ridges back and forth on the circular needle. Work the edge sts as described above. The last row is a WS row, and the yarn is changed to colour B when there is 1 stitch left on the row and the last stitch is purled in colour B.

Module 2

Continue in garter stitch in colour B and work 40 garter ridges, ending on a WS row. Bind off knit-wise from the RS.

Module 3

Pick up and knit 62 sts along the left side of the work (modules 2 and 1) with colour C. Work 30 garter ridges, ending on a WS row. Bind off knit-wise from the RS.

Module 4

Pick up and knit 62 sts with colour D along the top of modules 2 and 3. Work 20 garter ridges, ending on a WS row. Bind off knit-wise from the RS.

Module 5

Pick up and knit 82 sts with colour A along the left side of the work (modules 4 and 3). Work 20 garter

ridges, ending on a WS row. Bind off knit-wise from the RS.

Module 6

Pick up and knit 82 sts with colour E along the top of the work (modules 4 and 5). Work 40 garter ridges, ending on a WS row. Bind off knit-wise from the RS.

Module 7

Pick up and knit 122 sts with colour F along the right side of the work (modules 1, 2, 4 and 6). Work 20 garter ridges, ending on a WS row. Bind off knit-wise from the RS.

Module 8

Pick up and knit 102 sts with colour B along the bottom of the work (modules 5, 3, 1 and 7). Work 20 garter ridges, ending on a WS row. Bind off knit-wise from the RS.

Model nr. 9a+b

Pick up and knit 41 sts with colour A along the left side of the work (module 6), join colour D and pick up and knit 101 sts along modules 5 and 8. There are now total of 142 sts on the needle. Work 20 garter ridges, remembering to cross the yarns at the colour changes as described under "Intarsia" at the top of the pattern. End on a WS row.

Bind off: Bind off the colour A sts knit-wise to the last colour A stitch, change to colour D and bind off the remaining sts knit-wise.

Module 10a+b+c

Pick up and knit 81 sts with colour E along the right side of the work (module 8 and half of module 7), join colour C and pick up and knit 20 sts along the next 20 sts of module 7, join colour B and pick up and knit 41 sts along the last sts of module 7. There are now a total of 142 sts on the needle. Work 20 garter ridges, remembering to cross the yarns at the colour changes as described under "Intarsia" at the top of the pattern. End on a WS row.

Bind off: Bind off the colour E sts knit-wise to the last colour E stitch, change to colour C and bind off the colour C sts knit-wise to the last colour C stitch, change to colour B and bind off the remaining sts knit-wise.

Module 11a+b

Pick up and knit 71 sts with colour F along the bottom of the work (module 9b and half of module 8), join colour D and pick up and knit 71 sts along the second half of module 8 and all of module 10c. There are now a total of 142 sts on the needle. Work 30 garter ridges, remembering to cross the yarns at the colour changes as described under "Intarsia" at the top of the pattern. End on a WS row.

Bind off: Bind off the colour F sts knit-wise to the last colour F stitch, change to colour D and bind off the remaining sts knit-wise.

Edge

Pick up and knit sts all along the outside edge with colour G and a 4 mm circular needle. There will be a lot of sts on the needle, so using multiple circular needles og a very long needle can be helpful:
 Cast on 1 stitch on the needle, then start at the bottom right corner of module 11a (market with an X on the chart), pick up 1 stitch exactly in the corner and mark this stitch, yarn over, pick up and knit 170 sts along the side of the blanket to the next corner, yarn over, pick up 1 stitch exactly in the corner and mark this stitch, yarn over, pick up and knit 140 sts along the short side of the blanket to the next corner, yarn over, pick up 1 stitch exactly in the corner and mark this stitch, yarn over, pick up and knit 170 sts along the side of the blanket to the next corner, yarn over, pick up 1 stitch exactly in the corner and mark this stitch, yarn over, pick up and knit 140 sts along the

short side of the blanket to the next corner, yarn over, cast on 1 stitch in extension of the sts on the needle.
 Next row (WS): P1, knit to the last stitch, knitting yarn overs through the back loop, p1.
 Next row: K1, yarn over, *knit to the marked stitch, yarn over, k1, yarn over*, repeat from * to * at all marked sts, knit to the last stitch, yarn over, k1.
 Repeat these 2 rows until a total of 8 garter ridges have been worked, ending on a WS row.
 Bind off knit-wise on the next row, while working yarn overs at each marked stitch as before and binding off the yarn overs the same as normal sts.

Finishing

RS facing, graft together the open corner of the edge. Weave in ends. Gently wash the finished blanket according to the instructions on the yarn labe and lay it flat on a towel to dry.

Chart

