

# filcolana

OBSESSED WITH QUALITY YARN SINCE 1952



Design: Hanne Rimmen  
English translation: June Thomsen

## Jingle Bells

1st edition - August 2022 © filcolana  
#FilcolanaJingleBells

**“Jingle Bells” is one of the most famous American Christmas songs. Written by organist James Lord Pierpont way back in 1857 and originally sung by children’s choirs in churches. In Danish, the well-known Christmas song came to be named “Bjældeklang”, when it was translated by Otto Leisner in 1947.**

### SIZES

4 years/104 cm (6 years/116 cm) 8 years/128 cm  
(10 years/140 cm) 12 years/152 cm

### MEASUREMENTS

Fits chest sizes: 56-60 (60-66) 66-70 (70-74)  
74-78 cm  
Circumference: 64 (70) 74 (78) 82 cm  
Length (measured middle of the back): 40 (43) 46  
(48) 50 cm  
Sleeve length: 28 (30) (32) 34 (36) cm

### GAUGE

22 sts and 30 rows in stockinette on 3.5 mm needles =  
10 x 10 cm. Gauge is measured after washing.

Needle sizes are for guidance only.

If you have more stitches on 10 cm, change to a larger  
needle. If you have fewer stitches on 10 cm, change  
to smaller needles. Note, that the gauge should be the  
same for both the plain knit and the pattern knit to  
achieve the desired result.

### MATERIALS

Yarn from Filcolana

#### Colour A:

150 (200) 200 (250) 250 g **Pernilla** in col. 977  
(Marzipan) and  
75 (100) 100 (125) 125 g **Alva** in col. 101  
(Natural White)

#### Colour B:

50 g **Pernilla** in col. 346 (Thuja) and  
25 g **Alva** in col. 147 (Hunter Green)

**Work each colour with the two yarn bases held  
together.**

**Scrap yarn in the same quality and in different co-  
lours for embroidery.**

**3 mm and 3.5 mm circular needles, 80 cm**

**3 mm and 3.5 mm double pointed needles** (can be  
skipped if you are knitting using the magic loop tech-  
nique)

**2 stitch markers**

**2 stitch holders**





---

# Techniques

---

## SPECIAL ABBREVIATIONS

### M1L - Left slanted increase

From the front, lift the horizontal strand between stitches with the left needle and knit through the back loop (1 st increase).

### Sl1 k1 pss0

Slip 1 st, k1, pass the slipped stitch over.

## SPECIAL TECHNIQUES

### Short rows

Slip 1st st purl-wise with yarn in front onto right needle. Tug the yarn up and over the needle. This creates a double stitch. Continue working the row as instructed in pattern. On next row work the double sts together.

This technique is called German short rows.

## EMBROIDERY

French knots (see below) are embroidered on some of the Christmas trees on the yoke. For these, use differently coloured yarn in the weight corresponding with the yarn base the sweater is knitted in.

The French knots are placed randomly on the branches and can of course be left out.

The star motif at the top of some of the Christmas trees is created with four French knots placed in a cross above the Christmas tree, see diagram A.

### French knots

Find the stitch where you like to place the knot, insert the tapestry needle through the blouse, hold the thread down with your left thumb. Make sure you do not insert the needle in the middle of a stitch, where the thread cannot “get caught” but insert the needle through the yarn of the stitch. Twist the thread twice or more around the needle, depending on how large you want the knot to be. Hold the thread down, while twisting the needle around so it comes back to the starting position.

Insert the needle close to the point where you inserted the last needle and pull it through to the wrong side. Tighten the knot around the needle and at the same time hold it down, while pulling the needle and the yarn through the knitted part. Insert the needle at the stitch, where the next knot will be or weave in the end.

---

# Workflow

---

The blouse is worked top down, with 1 string of each yarn base held together.

Work begins with short rows in the neck, the working the yoke according to the chart. Then work is divided into body and sleeves and each part is finished separately.

Finish the body and bind off with Italian bind off.

Then work the sleeves and finish them with a ribbing edge and Italian bind off.

Next, pick up sts for the neckband which is worked in rib and finished with Italian bind off.

As a final touch decorate the Christmas trees with French knot embroidery stitches.

## CHART

See page 5.





---

# Pattern

---

## YOKE

With 3.5 mm circular needles cast on 90 (100) 100 (110) 110 sts using colour A and 1 strand of each quality held together.  
Join round and place a start marker.

Knit stockinette over 1 round.

Work short rows back and forth to give the neck height, knit as follows (read the chapter under Special techniques):

**1st short row (RS):** Knit 6 sts, turn.

**2nd short row (WS):** Work a short row, purl 11 sts, turn.

**3rd short row:** Work a short row, knit to, and include the short row from previous row, k8, turn work.

**4th short row:** Work a short row, purl to, and include last short row on previous needle, purl 8 sts, turn work.

Repeat rows 3 and 4 another 3 (4) 4 (4) 4 times.

**Last short row (RS):** Work 1 short row, knit to start marker.

You have now worked all short rows.

On next round increase 5 (0) 5 (0) 5 sts evenly on round = 95 (100) 105 (110) 115 sts.

Continue in the round like this:

Follow chart A and work 38 rounds in pattern and with increases as indicated = 228 (240) 252 (264) 276 sts.

Knit 4 (6) 8 (11) 13 rounds of stockinette.

Now divide work into body and sleeves, and finish each part separately like this:

**Next round:** Knit 32 (35) 37 (39) 41 sts (right side of the back), split the strands and cast on 10 (10) 12 (12) 14 new sts using the long-tail cast-on method, place a marker between the middle of the new sts, place the next 50 (50) 52 (54) 56 sts (right sleeve) on a stitch holder or a string, knit 64 (70) 74 (78) 82 sts (front), divide the threads and cast on 10 (10) 12 (12) 14 new sts and place a start marker in the middle of the new sts, place the next 50 (50) 52 (54) 56 sts (left sleeve) onto a stitch holder or string, knit 32 (35) 37 (39) 41 sts (left side of the back) = 148 (160) 172 (180) 192 sts.

Round begins at the side marker under the left sleeve.

Knit stockinette until work measures 17 (18) 21 (22) 23 cm from the armhole.

Join colour B to work and follow chart B.





Break colour B and continue using colour A exclusively.

Change to 3 mm circular needles.

Knit 1 round.

### Rib

Knit 5 cm rib (k1, p1).



### Bind off with Italian bind off technique as follows:

Measure a tail approx. 3 times the length of the rib circumference. Thread tail onto a tapestry needle. First st should be a knit st.

1. Insert tapestry needle into the first st on left needle as if to purl, pull the yarn through.
2. From behind work insert needle between 1st and 2nd st. Pull needle and yarn to front of work.
3. Insert tapestry needle through the 2nd st, from front and out on the back.
4. Insert tapestry needle from front into the 1st st as if to knit it, slip st off needle.
5. From the front insert tapestry needle - from right to

left – into the front leg of the 2nd st (knit st), pull yarn through.

6. Insert tapestry needle into 1st st as if to purl, slip st off needle.

Repeat steps 2-6 until you bound off all sts.

Weave in end, carefully.

### SLEEVES

Slip the 50 (50) 52 (54) 56 sleeve sts onto the 3.5 mm needles.

Join colour A to the right side of the armhole and pick up 5 (5) 6 (6) 7 sts from the bottom of the armhole to the resting sts. Knit the resting sts and pick up 5 (5) 6 (6) 7 sts to the middle of the armhole, place a start marker = 60 (60) 64 (66) 70 sts.

Work stockinette over 14 rounds.

**Next round (decrease round):** K1, k2tog, knit to last 3 sts, sl1 k1 pss0, k1.

Repeat this decrease round on every 7th (8th) 9th (9th) 8th round 7 (7) 7 (7) 9 times in total.

You now have 46 (46) 50 (52) 52 sts on your needles.

Now, work sleeve in stockinette without decreases until sleeve measures 22 (24) 26 (28) 30 cm from the armhole.

Join colour B to work and follow chart B.

Break colour B and continue with colour A exclusively.

Change to 3 mm needles.

Knit 1 round.

### Rib

Knit 5 cm rib (k1, p1).

Bind off with Italian bind off as on the body.

### NECKLINE

With 3 mm needles and colour A pick up sts along the right side of the neckline, like this:

Start at the middle of the back and pick up 90 (100) 100 (110) 110 sts distributed evenly.

Join round and place a start marker.

Knit 1 round.

Now, work rib (k1, p1) till neckband measures 4 cm.

Bind off with Italian bind off as on the body.



## FINISHING

Weave in ends.

Wash blouse according to the washing instructions on the labels.

Lay the blouse flat to dry on a towel.

## CHART

Read chart bottom up, and from right to left on all rounds.

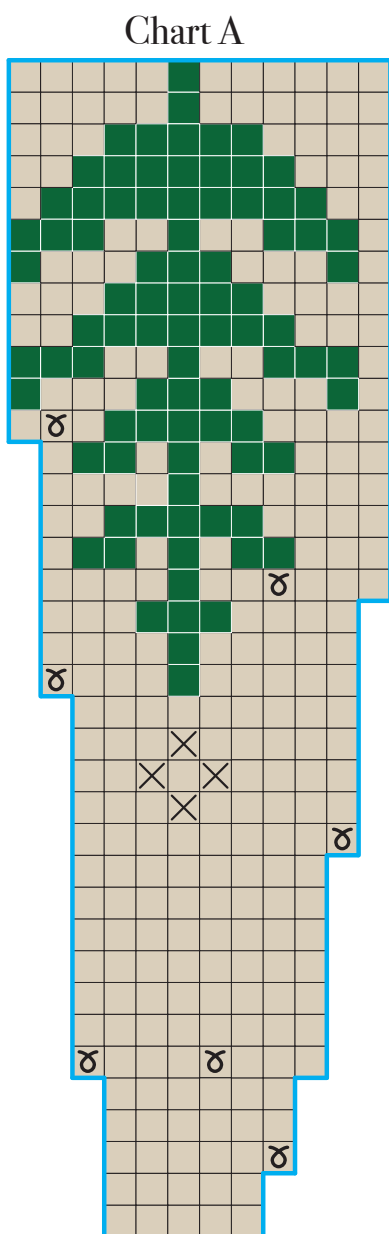


Chart B



■ Colour A

■ Colour B

⌘ M1L

⊗ French knot

□ Repeat