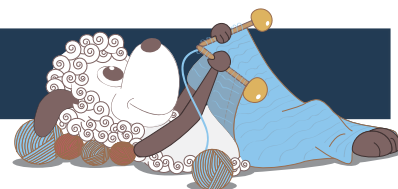


Celestrina - a glittery sweater for girls



Design: Signe Strømgaard

The designer has gone all in on the girly power for this lovely sweater for girls. Celestrina has both a beautiful melon pink colour, lots of gorgeous glitter and cool cables to top it all off. What's not to love!

1st English edition - January 2020 © Filcolana A/S

Materials

150 (150) 150 (200) 200 (250) g Pernilla by Filcolana in colour 826 (Cantaloupe melange)
50 (75) 75 (75) 100 (100) g Paia fra Filcolana in colour 709 (Rose Shimmer)
4 mm and 5 mm circular needles, 40 cm and 60 cm
4 mm and 5 mm double-pointed needles
Markers
Cable needle

Sizes

2 years/92 cl (4 years/104 cl) 6 years/116 cl (8 years/128 cl) 10 years/140 cl (12 years/152 cl)

Measurements

Body, chest: 52-56 (56-61) 61-66 (66-70) 70-75 (75-80) cm
Sweater, chest: 64 (68) 74 (78) 82 (89) cm
Total length: 35 (40) 45 (50) 54 (58) cm
Sleeve length: 21 (29) 32 (35) 38 (41) cm

Gauge

19 sts and 26 rows in stockinette stitch on a 5 mm needle = 10 x 10 cm

Special abbreviations

M1k: Make 1 knit. Increase one stitch knit-wise by lifting the chain between sts onto the left needle and knitting it through the back loop.

M1p: Make 1 purl. Increase one stitch by lifting the chain between sts onto the left needle and purling it through the back loop.

Tbl: through the back loop.



Skp: slip 1 stitch, knit the next stitch, pass the slipped stitch over the knitted stitch.

Special techniques

Short rows - GSR (German short rows): Work to where the turn needs to be, turn, then slip the first stitch purl-wise with the yarn held in front. Bring the working yarn up and over the needle and down on the other side, pulling hard enough on the yarn to make the stitch on the needle look like a double stitch (the 2 legs of the stitch are visible). Continue row as pattern describes.

When working across the stitch that looks like a double stitch, work it as 1 stitch, either knitting or purling the 2 legs together, as the pattern describes.

Directions for knitting

The design is worked from the bottom up. First the body is worked in the round to the armholes, then the sleeves are worked in the same way. Then the body and sleeves are joined for the yoke, which is worked in the round with raglan decreases and the neckline is shaped with short rows.

Body

Cast on 128 (136) 144 (152) 160 (172) sts on a 4 mm circular needle. Join in the round and place a marker for the beginning of the round.

Twisted rib: *k1 tbl, p1*, repeat from * to * to the end of the round.

Work 4 cm of twisted rib.

Change to a 5 mm circular needle.

Next round: *Purl 20 (22) 24 (26) 28 (30) sts, place chart marker, work start row of chart, place chart marker, purl 19 (21) 23 (25) 27 (31) sts, M1k*, place a marker for the side "seam", work from * to * once more.

There are now 138 (146) 154 (162) 170 (182) sts on the needle.

Cables

Next round: *Purl to chart marker, work row 1 of the chart *, repeat from * to * once more, purl to end of round.

Continue as established repeating row 1-8 of the chart throughout until the work measures approx. 23 (27) 31 (35) 38 (41) cm. End on row 7 (5) 3 (1) 1 (5) of the chart.

Bind off for the armholes on the next round: *Bind off 4 (4) 5 (5) 6 (6) sts, purl to chart marker, work chart, purl to 4 (4) 5 (5) 6 (6) sts before the side "seam" marker, bind off the next 8 (8) 10 (10) 12 (12) sts, purl to chart marker, work chart, purl to 4 (4) 5 (5) 6 (6) sts before end of round, bind off these last sts.

Let the body rest while the sleeves are being worked.

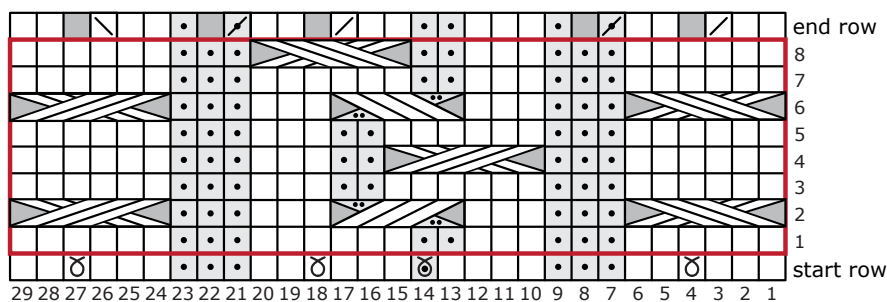
Sleeves

Cast on 34 (34) 36 (36) 38 (40) sts on 4 mm double-pointed needles.

Join in the round and place a marker for the beginning of the round.

Twisted rib: *k1 tbl, p1*, repeat from * to * to the

Chart



□ knit on RS, purl on WS

• purl on RS, knit on WS

⊗ M1k

⊙ M1p

□ pattern repeat



slip 3 sts to cable needle and hold to front of work, k3, k3 from cable needle



slip 3 sts to cable needle and hold to back of work, k3, k3 from cable needle



slip 3 sts to cable needle and hold to front of work, p2, k3 from cable needle



slip 2 sts to cable needle and hold to back of work, k3, p2 from cable needle

end of the round.
Work 3 cm of twisted rib.

Change to 5 mm double-pointed needle and continue in stockinette stitch.
Next round: Knit 4 (4) 6 (4) 6 (0) sts, *M1k, knit 5 (5) 5 (4) 4 (5) sts*, repeat from * to * to the end of the round. There are now 40 (40) 42 (44) 46 (48) sts on the needle.

Continue in stockinette stitch while working an increase round every 12th (12th) 16th (16th) 16th (16th) round a total of 3 (4) 4 (4) 4 (4) times.
Increase round: K1, M1k, knit to the last stitch on the round, M1k, k1.
There are now 46 (48) 50 (52) 54 (56) sts on the needle.

Work straight in stockinette stitch until the sleeve measures 22 (29) 32 (35) 38 (41) cm.

Bind off sts for the armhole as follows: Bind off 4 (4) 5 (5) 6 (6) sts, knit to the last 4 (4) 5 (5) 6 (6) sts of the round, bind off these sts.

Work the second sleeve the same way as the first.

Yoke

Join the sleeve and body on a 5 mm circular needle by placing the sleeve over where sts were bound off for the armholes on either side of the body. Place markers the 4 places where sleeves and body meet to mark where raglan decreases are worked. The beginning of the round is at the marker between the right sleeve and the back. There are a total of 198 (210) 214 (226) 230 (246) sts on the needle.

Round 1: *P1, p2tog tbl, purl to chart marker, work chart, purl to 3 sts before raglan marker, p2tog, p1, slip marker, k1, k2tog, knit to 3 sts before raglan marker, ssk, k1, slip marker* work from * to * once more.

Round 2: *Purl to chart marker, work chart, purl to raglan marker, knit to raglan marker*, work from * to * once more.

Work Round 1 and 2 a total of 12 (13) 14 (15) 15 (17) times. End on row 8 of the chart.

There are now 102 (106) 102 (106) 110 (110) sts on the needle.

Now work short rows to shape the neckline while continuing to work the chart as follows:

Short row 1 (RS): P1, p2tog tbl, purl to chart marker, work chart, purl to 3 sts before raglan marker, p2tog, p1, slip marker, k1, k2tog, knit to 3 sts before raglan marker, ssk, k1, slip marker, p1, p2tog tbl, p1, turn.

Short row 2 (WS): Knit to raglan marker, purl to raglan marker, knit to chart marker, work chart, knit to raglan marker (beginning of round), purl to raglan marker, k4, turn.

Short row 3: P1, p2tog, p1, slip marker, k1, k2tog, knit to 3 sts before raglan marker (beginning of

round), ssk, k1, slip marker, p1, p2tog tbl, purl to chart marker, work chart, purl to 3 sts before raglan marker, p2tog, p1, slip marker, k1, k2tog, knit to 3 sts before raglan marker, ssk, k1, turn.

Short row 4: Purl to raglan marker, knit to chart marker, work chart, knit to raglan marker (beginning of round), purl to raglan marker, turn.

Short row 5: K1, k2tog, knit to 3 sts before beginning of round marker, ssk, k1, slip marker, p1, p2tog tbl, purl to chart marker, work chart, purl to 3 sts before raglan marker, p2tog, p1, slip marker, k1, k2tog, knit to 4 sts before raglan marker, turn.

Short row 6: Purl to raglan marker, knit to chart marker, work chart, knit to raglan marker (beginning of round), purl to 4 sts before raglan marker, turn.

Short row 7: Knit to 3 sts before raglan marker (beginning of round), ssk, k1, slip marker, p1, p2tog tbl, purl to chart marker, work chart, purl to 3 sts before raglan marker, p2tog, p1, turn.

Short row 8: Knit to chart marker, work chart, knit to raglan marker (beginning of round), turn.

There are now 82 (86) 82 (86) 90 (90) sts on the needle.

Now work the end row of the chart as follows: Purl to chart marker, work end row of chart, purl to raglan marker, knit to raglan marker, p1, p2tog tbl, purl to chart marker, work end row of chart, purl to 3 sts before raglan marker, p2tog, p1, knit to raglan marker. There are now 70 (74) 70 (74) 78 (78) sts on the needle.

Rib edge

Change to 40 cm long 4 mm circular needle and work 3 cm of twisted rib: *K1 tbl, p1*, repeat from * to * to the end of the round. Bind off loosely in twisted rib.

Sew the holes under the sleeve and weave in all ends.

