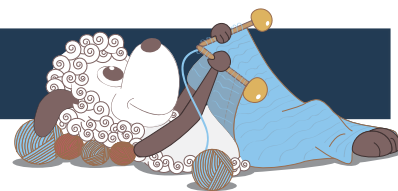


Rigmor - a soft evening shawl



Design: Rachel Søgaard



"Rigmor" is part of Filcolana's "Colours of the Scandinavian Summer" collection. For this collection our team of designers have found inspiration in the incredible Scandinavian light and colours in the works of the Skagen Painters.

The colours of the "Rigmor" shawl are inspired by P. S. Krøyer's painting "Aftenstemning fra Skagen" (Evening at Skagen). The dark greyish purple and green of the heather and the pink hues of the sunset, fading into the bright blue of the sky. The soft Indiecita yarn gives the shawl a lovely drape around the shoulders, while the airy Tilia yarn ensures that the shawl still feels light.

1st English edition - August 2017 © Filcolana A/S
English translation: Signe Strømgaard

Materials

Indiecita by Filcolana:

100 g in colour 402 Medium Grey (A)

200 g in colour 401 Light Grey (B)

Tilia by Filcolana:

25 g in colour 342 Arctic Blue (C)

50 g in colour 327 Sage (D)

25 g in colour 341 Winter Peach (E)

25 g in colour 321 Sakura (F)

25 g in colour 281 Rime Frost (G).

5 mm circular needle, 60-80 cm – the shawl is worked back and forth on a circular needle

Measurements

Approx. 60 x 208 cm

Gauge

17 sts and 25 rows in stockinette stitch on a 5 mm needle with 1 strand of each yarn held together = 10 x 10 cm.



Special abbreviations

Skp: slip 1 stitch, knit the next stitch, pass the slipped stitch over the knitted one.

Directions for knitting

Throughout the work one strand of each yarn is held together. The shawl is worked from the bottom up with increases and decreases creating the zig zag. At the end a sewn bind-off is worked.

Shawl

Cast on 133 sts on a 5 mm circular needle with 1 strand in colour A and 1 strand in color C.

Garner ridge edge:

Row 1 (RS): Slip 1 st purl-wise, k2, yarn over, k10, skp, k2tog, k10, yarn over, k1, yarn over, k30, skp, k2tog, k10, yarn over, k1, yarn over, k20, skp, k2tog, k10, yarn over, k1, yarn over, k20, skp, k3.

Row 2: Slip 1 st purl-wise, knit to end of row.
Repeat these 2 rows once more.

Continue in *stockinette stitch* as follows:

Row 1 (RS): Slip 1 st purl-wise, k2, yarn over, k10, skp, k2tog, k10, yarn over, k1, yarn over, k30, skp, k2tog, k10, yarn over, k1, yarn over, k20, skp, k2tog, k10, yarn over, k1, yarn over, k20, skp, k3.

Row 2: Slip 1 st purl-wise, k2, purl to the last 3 sts, k3.

Repeat these 2 rows 9 more times.

Continue in *reverse stockinette stitch* as follows:

Row 1 (RS): Slip 1 st purl-wise, k2, yarn over, p10, ssp, p2tog, p10, yarn over, p1, yarn over, p30, ssp, p2tog, p10, yarn over, p1, yarn over, p20, ssp, p2tog, p10, yarn over, p1, yarn over, p20, ssp, k3.

Row 2: Slip 1 st purl-wise, knit to end of row.
Repeat these 2 rows 9 more times.

Again work 20 rows of *stockinette stitch* with increases and decreases as above.

Continue working increases and decreases as above, alternating between *stockinette* and *reverse stockinette stitch*, at the same time changing colours in the following way:

Change to 1 strand in colour A and 1 strand in colour D and work 20 rows of *reverse stockinette stitch*, 20 rows of *stockinette stitch* and 20 rows of *reverse stockinette stitch*.

Change to 1 strand in colour B and 1 strand in colour D and work 20 rows of *stockinette stitch*, 20 rows of *reverse stockinette stitch* and 20 rows of *stockinette stitch*.

Change to 1 strand in colour B and 1 strand in colour E and work 20 rows of *reverse stockinette stitch*, 20 rows of *stockinette stitch* and 20 rows of *reverse stockinette stitch*.



P.S. Krøyer, Aftenstemning fra Skagen, 1883
Statens Museum for Kunst
Public domain

Change to 1 strand in colour B and 1 strand in colour F and work 20 rows of *stockinette stitch*, 20 rows of *reverse stockinette stitch* and 20 rows of *stockinette stitch*.

Change to 1 strand in colour B and 1 strand in colour G and work 20 rows of *reverse stockinette stitch*, 20 rows of *stockinette stitch* and 20 rows of *reverse stockinette stitch*.

Garner ridge edge:

Row 1 (RS): Slip 1 st purl-wise, k2, yarn over, k10, skp, k2tog, k10, yarn over, k1, yarn over, k30, skp, k2tog, k10, yarn over, k1, yarn over, k20, skp, k2tog, k10, yarn over, k1, yarn over, k20, skp, k3.

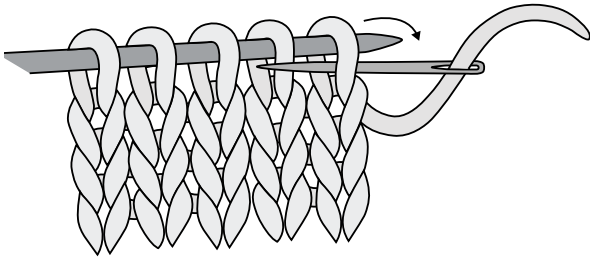
Row 2: Slip 1 st purl-wise, knit to end of row.
Repeat these 2 rows once more.

Bind off all stitches from the RS using a sewn bind-off (illustrated guide on page 3): Break the yarn leaving a tail 3 times the length of the edge being bound off. Thread the end of the yarn on a wool needle. Insert wool needle into 1st stitch as if to purl, pull the yarn through the stitch, then let the stitch fall of the needle, *insert wool needle in the 2nd stitch on the needle as if to knit, pull the yarn through to the RS of the work, then insert the wool needle through the 1st stitch on the needle as if to purl, pull the yarn through, and let the 1st stitch fall of the needle*, repeat from * to * until all sts have been bound off.

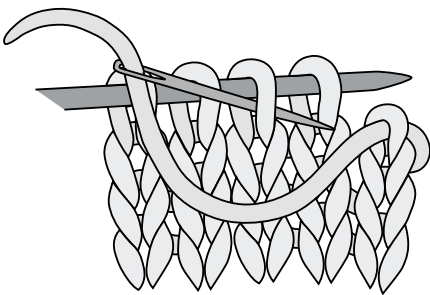
Finishing

Gently rinse the work, put it through a (dry) spin cycle and lay it on a flat surface to dry.

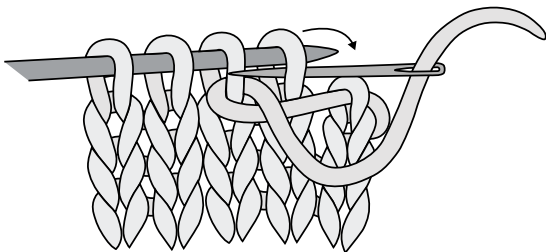
Sewn bind-off



Insert wool needle into 1st stitch as if to purl, pull the yarn through the stitch, then let the stitch fall off the needle, *



insert wool needle in the 2nd stitch on the needle as if to knit, pull the yarn through to the RS of the work,



then insert the wool needle through the 1st stitch on the needle as if to purl, pull the yarn through, and let the 1st stitch fall of the needle*, repeat from * to * until all sts have been bound off.