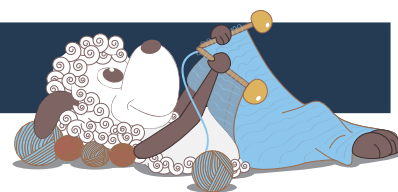


# Esben - a cabled sweater for kids



Design: Rachel Søgaard

*A classic aran design for kids. Knit this beautiful design in the traditional white or give it a more modern twist with a bright color.*

1st English edition - January 2017, © Filcolana A/S  
English translation: Signe Strømgaard

## Materials

350 (400) 450 (500) g Peruvian Highland Wool by Filcolana in color 101  
3 mm and 4,5 mm circular needle, 40-60 cm long  
Stitch marker

## Sizes

2-3 (4-5) 6-7 (8-9) years

## Measurements

Sweater, chest: 68 (76) 84 (92) cm  
Sleeve length: approx. 28 (32) 36 (40) cm  
Total length: approx. 39 (43) 47 (51) cm

## Gauge

18 sts and 27 rows in seed stitch on a 4,5 mm needle  
= 10 x 10 cm

## Special abbreviations

**M1:** Make 1. Increase one stitch by lifting the chain between sts onto the left needle and knitting it through the back loop.

## Seed stitch

Row 1: \*k1, p1\*. Repeat from \* to \*.  
Row 2: Purl the knit sts and knit the purl sts.

## Directions for knitting

The pieces are worked separately, meaning the back, front and sleeves are worked individually, back and forth, and are sewn together at the end.

## Back

Cast on 82 (90) 98 (102) sts on a 3 mm needle and knit 4 rows of stockinette stitch. Row 1 is a WS row. Then work ribbing:  
Row 1 (WS): k2, \*p2, k2\*. Repeat from \* to \* end of row.  
Row 2: p2, \*k2, p2\*. Repeat from \* to \* end of row.  
Repeat Row 1 and 2 a total of 5 times.

Knit 1 row from the WS, then purl 1 row from the RS. Change to a 4,5 mm needle.  
Next row: Work 11 (15) 19 (23) sts in seed stitch, 60 sts according to the chart, 11 (15) 19 (23) sts in seed stitch.  
Continue in this way until the work measures 24 (26) 28 (30) cm.

Now shape the armholes by binding off 6 sts at the



beginning of the next 2 rows, while working remaining sts in pattern. Continue in pattern as established across remaining sts for 14 (16) 18 (20) cm.

Bind off for the neck: Work 22 (25) 28 (29) sts in pattern, bind off 26 (28) 30 (32) sts, work 22 (25) 28 (29) sts in pattern. Finish each shoulder separately.

Continue in pattern while binding off sts at the neck edge at the beginning of every other row. First bind off 3 sts once, then 2 sts once. Break the yarn and move the sts to a stitch holder. Finish the second shoulder in the same way.

### Front

Cast on sts and work the front the same way as the back until the work measures 12 (14) 16 (18) cm after binding off sts for the armholes.

Bind off for the neck: Work 27 (30) 33 (34) sts in pattern, bind off 16 (18) 20 (22) sts, work 27 (30) 33 (34) sts in pattern.

Finish each side separately.

Continue in pattern while binding off sts at the neck edge at the beginning of every other row. First bind off 3 sts once, then 2 sts twice and then 1 stitch a total 3 times. Work straight in pattern until the front shoulder is the same length as the back shoulders.

Place the front shoulder RS together with the corresponding back shoulder and bind the 2 sides of together using the 3-needle bind-off.

Finish the second shoulder in the same way - only mirror reversed.

### Sleeves

Cast on 46 (50) 54 (58) sts on 3 mm needle knit 4 rows of stockinette stitch. Row 1 is a WS row.

Then work ribbing:

Row 1 (WS): k2, \*p2, k2\*. Repeat from \* to \* end of row.

Row 2: p2, \*k2, p2\*. Repeat from \* to \* end of row.

Repeat Row 1 and 2 a total of 5 times.

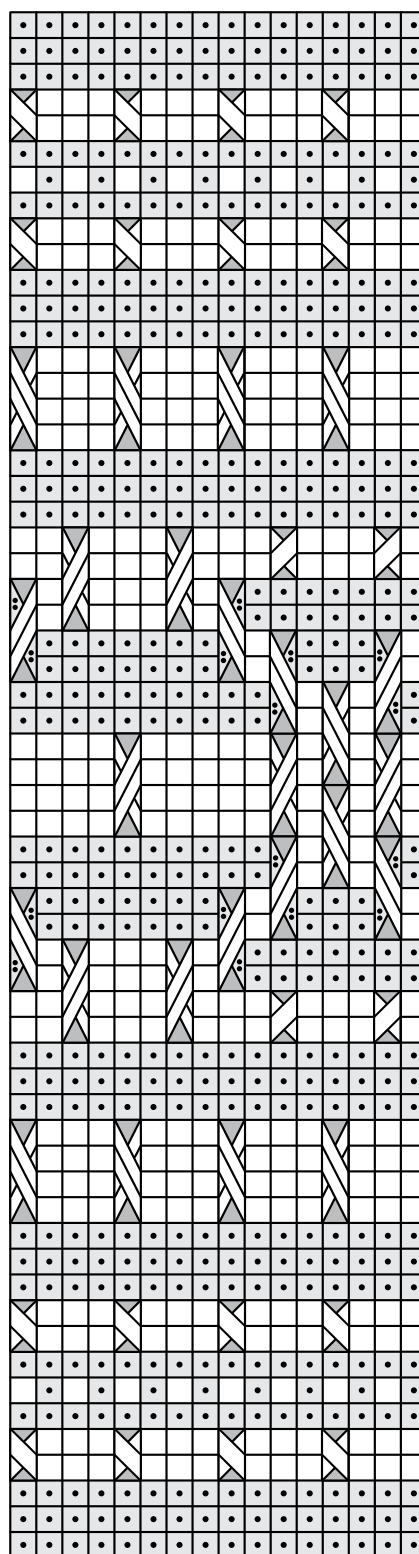
Knit 1 row from the WS.

Next row (RS): K1, M1, purl to last stitch, M1, k1.

Change to a 4,5 mm needle.

Next row: Work 0 (1) 3 (5) sts in seed stitch, purl 2 (3) 3 (3) sts, work 44 sts ac-

### Cable chart



↑ sleeve pattern begins here

Slip the next 2 sts to a cable needle and hold to back of work, k2, k2 from cable needle



Slip the next 2 sts to a cable needle and hold to front of work, k2, k2 from cable needle



Slip the next 2 sts to a cable needle and hold to back of work, k2, p2 from cable needle



Slip the next 2 sts to a cable needle and hold to front of work, p2, k2 from cable needle



↓ sleeve pattern ends here

□ Knit on the RS, purl on the WS

◻ Purl on the RS, knit on the WS

▧ Slip the next stitch to a cable needle and hold to back of work, k1, k1 from cable needle

ording to the chart, purl 2 (3) 3 (3) sts, work 0 (1) 3 (5) sts in seed stitch.

Work an increase row by working an M1 after the first stitch and before the last stitch every 6th row a total of 6 (8) 10 (12) times. There are now 60 (68) 76 (84) sts on the needle. Work the new sts in seed stitch.

Work straight in pattern until the sleeve measures 28 (32) 36 (40) cm. Bind off all sts.

Work a second sleeve the same way as the first.

### **Neck edge**

Pick up and knit 96 (100) 104 (108) sts all the way around the neck edge using a 3 mm circular needle. Join in the round and purl 2 rounds. Work 10 rounds of k2, p2 ribbing. Knit 4 rounds. Bind off.

### **Finishing**

Sew the sleeves to the armholes. Sew the side and sleeve seams. Gently steam the work.