

Stjernedrys - a beautiful, starry sweater



Design: Rachel Søgaard

Stjernedrys was a hit from day one. It's such a gorgeous design sprinkled with little stars. The pattern looks like random dots - or stars, but they are actually worked from a chart, so they are not as random as they appear. There is also a kids' version of this design.

3rd English edition - October 2019 © Filcolana A/S
English translation: Signe Strømgaard

Materials

Pernilla by Filcolana:

Main color: 250 (300) 350 (350) g in color 955 (Medium Grey melange)

Contrast color: 100 g (all sizes) in color 825 (Acacia melange)

3 and 3,5 mm circular needles, 40 and 80 cm

3 and 3,5 mm double-pointed needles

Stitch markers

Sizes

S (M) L (XL)

Measurements

Body, chest: 80-88 (89-96) 97-104 (105-112) cm

Sweater, chest: 94 (102) 110 (118) cm

Sleeve length: ca. 45 (46) 47 (48) cm

Total length: ca. 58 (61) 64 (66) cm

Gauge

25 sts and 37 rows in stockinette stitch on 3,5 mm needles = 10 x 10 cm

Short rows

Work to turning point for short row. Turn. Slip the first stitch purl-wise with the yarn held in front of the work, then pull the yarn up and over the needle, pulling hard enough to make the stitch appear like a double stitch. When the stitch is worked later the two loops are worked together as one stitch.



Directions for knitting

The sweater is worked from the top down. Short rows are worked after the rib to shape the neckline and raglan increases are worked to shape the yoke. Then the yoke is split onto sleeves and body and each part is finished separately. It might be necessary to change needle size when working the colorwork pattern is worked toward the hem and cuffs to maintain gauge. It can be helpful to place a stitch marker between each repeat of the pattern across the row.

Yoke

Cast on 122 (128) 134 (140) sts on a 3 mm circular needle with the main color. Join in the round and place a marker for the beginning of the round (back of neck). Work 9 rounds of k1, p1 ribbing.

Change to a 3,5 mm circular needle and work in stockinette stitch while placing 4 markers as follows: Knit 20 (21) 22 (23) sts (½ back), k1 (mark this stitch), knit 15 (16) 17 (18) sts (right sleeve), k1 (mark this stitch), knit 47 (49) 51 (53) sts (front), k1 (mark this stitch), knit 15 (16) 17 (18) sts (left sleeve), k1 (mark this stitch), knit 21 (22) 23 (24) sts (½ back).

Short rows

Short row 1 (RS): Knit to the marked stitch, (k1, yarn over, k1) in the marked stitch, k4, turn.

Short row 2: Purl to beginning of round, purl to the marked stitch, (p1, yarn over, p1) in the marked stitch, p4, turn.

Short row 3: Knit to beginning of round, knit to the marked stitch, (k1, yarn over, k1) in the marked stitch, knit to 4 sts past last turn, turn.

Short row 4: Purl to beginning of round, purl to the marked stitch, (p1, yarn over, p1) in the marked stitch, purl to 4 sts past last turn, turn.

Work Short row 3 and 4 once more.

Knit to beginning of round, then continue around in stockinette stitch, working increases by (k1, yarn over, k1) in each of the marked stitches on the first round and on every other round another 28 (31) 34 (37) times.

There are now 76 (83) 90 (97) sts on each sleeve, 105 (113) 121 (129) sts on the front and back respectively as well as 4 marked sts - a total of 366 (396) 426 (456) m.

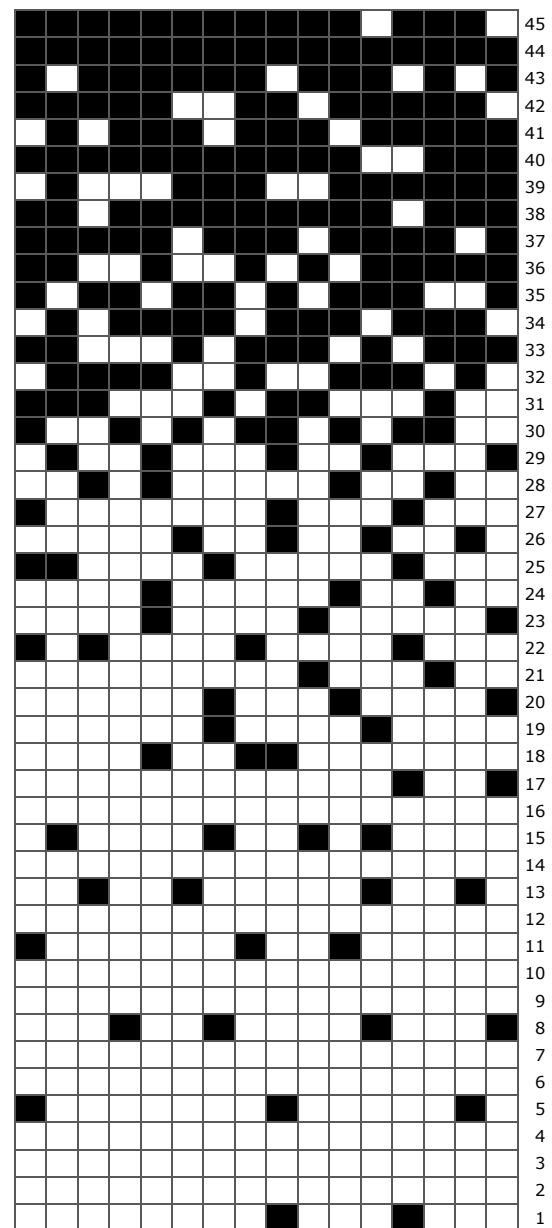
Body

Place the sleeve stitches on 2 stitch holders. The marked sts and the body sts are now worked in the round in stockinette stitch, while 11 (13) 15 (17) new sts are cast on over where the sleeve sts were on either side of the body. There are now 236 (256) 276 (296) sts on the needle.

Work straight until the body measures 22 (23) 24 (25) cm from where they were divided.

Adjust the number of sts by increasing (-) decreasing (increasing) a total of 4 (0) 4 (8) sts evenly across the next round. There are now 240 (256) 272 (304) sts.

Chart



■ Main color
□ Contrast color

Now work in the charted pattern, making sure to secure the longer floats of more than 4 sts on the WS of the work.

When all rows of the chart have been worked, knit 1 row in the contrast color.

Change to a 3 mm circular needle and work 4,5 cm of k1, p1 ribbing. Bind off.

Sleeves

Place the sts for the first sleeve on 3,5 mm double-pointed needle. Pick up and knit 1 stitch for every newly cast-on sts on the body, under the sleeve. There are now a total of 87 (96) 105 (114) sts. Next round: Work in stockinette stitch and knit 0 (2) 0 (2) sts together at the center of the picked up sts under the sleeve. Mark the center stitch of the picked up sts under the sleeve. There are now 87 (95) 105 (113) sts on the needle. Continue in stockinette stitch, decreasing 1 stitch on either side of the marked stitch every 8th (7th) 7th (6th) round a total of 14 (15) 17 (19) times as follows: Knit marked stitch, ssk, knit to 2 sts before marked stitch, k2tog. There are now 59 (65) 71 (75) sts on the needle.

At the same time work in the charted pattern, when the sleeve measures 28 (29) 30 (31) cm from where the work was divided into body and sleeves.

When all rows of the chart have been worked, knit 1 row in the contrast color. Change to 3 mm double pointed needles. **Next round:** K1, ssk, knit to end of round. There are 58 (64) 70 (74) sts on the needle. Work in k1, p1 ribbing for 4,5 cm. Bind off.

Work the second sleeve the same way as the first.

Finishing

Weave in all ends. Gently rinse work, put it through a (dry) spin cycle in the washing machine and lay it flat to dry.

