

Lise - a delicate, feminine cardigan



Design: Rachel Søgaard

A delicate, feminine cardigan perfect for wearing over a light dress or a thin shirt. Lise has sleeves with a bit of puff and lovely lace panels up the fronts, giving the design a wonderful vintage feeling.

1st English edition - August 2019 © Filcolana A/S
English translation: Signe Strømgaard

Materials

125 (125) 150 (150) g Tilia by Filcolana in colour 281 (Rime frost)
3 mm circular needle, 60 cm
3,5 mm circular needle, 40 and 60 cm
3 mm and 3,5 mm double-pointed needles
Stitch markers
5 buttons, approx. 18 mm in diameter

Sizes

S (M) L (XL)

Measurements

Body, chest: 80-88 (89-96) 97-104 (105-112) cm
Sweater, chest: 89 (97) 105 (113) cm
Sleeve length: 45 (46) 47 (48) cm
Total length: 47 (49) 51 (53) cm

Gauge

24 sts and 33 rows in stockinette stitch on a 3,5 mm needle = 10 x 10 cm.

Special abbreviations

M1: Make 1. Increase one stitch by lifting the chain between sts onto the left meedle and knitting it through the back loop.

Skp: slip 1 stitch, knit the next stitch, pass the slipped stitch over the knit stitch.





Directions for knitting

Lise is worked from the bottom up. The body is worked back and forth with charted pattern along the front edges to the armholes, then the sleeves are worked in the round to the armholes. The sections are then joined for yoke, which is worked with decreases – first on the body and sleeves, then on the sleeves only. Finally, the neck edge and front edges are worked.

Note: Take care to only join a new skein of yarn at the end of a row, as the ends are very difficult to weave in invisibly.

Body

Cast on 207 (227) 247 (267) sts on a 3 mm circular

needle. Work back and forth in k1, p1 rib for 7 cm. Begin with a WS row. end with a RS row.

Change to a 3,5 mm circular needle and continue as follows (WS): K1 (selvedge stitch), work 29 sts in the charted pattern, work stockinette stitch to the last 30 sts, work 29 sts in the charted pattern, k1 (selvedge stitch).

Continue as established, placing a marker after 53 (58) 63 (68) sts and a second marker after 101 (111) 121 (131) more sts to mark the "side seams".

Continue until work measures 29 (30) 31 (32) cm. End of a RS row.

Bind off sts for the armholes on the next row: *Work to 4 sts before marker, bind off 8 sts*. Repeat from * to * once more. Work to end of row.

Let the sts rest on the needle while the sleeves are worked.

Sleeves

Cast on 48 (52) 56 (60) sts on 3 mm double-pointed needles. Join in the round and place a marker for the beginning of the round. Work 9 cm of k1, p1 ribbing. Change to 3,5 mm double-pointed needles.

Next round: *K2, M1*. Repeat from * to * to end of round.

There are now 72 (78) 84 (90) sts on the needle. Continue in stockinette stitch until the sleeve measures 45 (46) 47 (48) cm.

Bind off sts for the armhole on the next round: Bind off 4 sts, k to the last 4 sts of the round, bind off the last 4 sts.

Work the second sleeve the same way as the first.

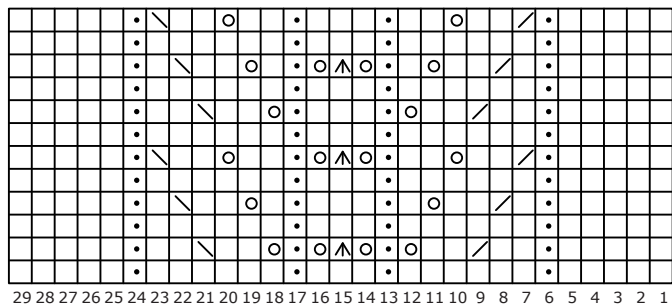
Yoke

Join the sleeves to the body on the 3,5 mm circular needle over where sts were bound off for the armholes. There are a total of 319 (351) 383 (415) sts on the needle.

Place a marker each of the 4 places where sleeves and body meet.

Continue to work back and forth with charted pattern along the front edges as established, while working the following decreases every RS row: *Work to 2 sts before marker, skp, slip marker, k2tog*. Repeat from * to * 3 more times. Work to end of row.

Diagram



- knit on RS, purl on WS
- purl on RS, knit on WS
- yarn over
- skp
- k2tog
- slip 2 sts together af if knitting them together, k1, pass slipped sts over

Work a total of 8 (9) 10 (11) decrease rows.

Now work decreases on the sleeves: *Work to marker, slip marker, k2tog, work to marker, skp, slip marker*. Repeat from * to * once more.

Work sleeve decreases every other RS row a total of 7 times, then every RS row a total of 6 (7) 8 (9) times.

At the same time as the 2nd sleeve decrease row is worked, sts are bound off for the neck edges follows: Bind off 11 (12) 13 (14) sts at the beginning of the row on the next 2 rows, then 4 sts on the next 2 rows, then 3 sts on the next 2 rows, then 2 sts on the next 2 rows, then 1 stitch on the next 6 rows.

Now work the neck edges straight while the remaining sleeve decreases are worked.

Next row (RS): Work across the 18 (21) 24 (27) sts of the right front, knit the 22 (24) 26 (28) sts for the right sleeve together 2 and 2, while at the same time binding off these sts, work across the back sts, then knit the 22 (24) 26 (28) sts for the left sleeve together 2 and 2, while at the same time binding off these sts, work across left front.

Now work back and forth across the sts for the left front, while casting on a new stitch at the end of the first row (selvedge stitch). Work a total 12 (14) 16 (18) rows straight. Then working a M1 increase at the neck edge every other row a total of 2 times.

Let the left front rest and finish the right front in the same way, only mirror reversed.

Finishing

Place the 21 (24) 27 (30) sts for the left front of the needle and place the 21 (24) 27 (30) sts from the corresponding back shoulder on a second needle. Join the two sets of sts together while at the same time binding them off using the 3-needle bind-off method.

Bind off the right shoulder in the same way

Neck edge: Pick up and knit sts from the RS using a 3 mm needle. Pick up and knit 1 stitch for every bound off stitch along the fronts, pick up and knit 3 sts for every 4 rows along the row-end edges and knit across the back sts on the needle. The total number of sts must be an odd number. Work 8 rows of k1, p1 ribbing. Bind off in rib from the WS.

Front edges

Pick up and knit sts from the RS along the left front edge using a 3 mm needle. Pick up and knit approx. 3 sts for every 4 rows. The total number of sts must be an odd number. Work 8 rows of k1, p1 ribbing. Bind off in rib from the WS.

Mark the placement of 5 buttons along the left front edge.

Pick up and knit the same number of sts from the RS along the right front edge using a 3 mm needle.

Work ribbing the same as on the left front edge, but work buttonholes as follows on Row 4: Bind off 4 sts, then cast on 4 new sts on the next row.

Weave in all ends. Sew the little hole under each sleeve using Kitchener stitch. Sew in the buttons.

Gently wash the finished cardigan, put it through a (dry) spin cycle and lay it on a towel to dry.