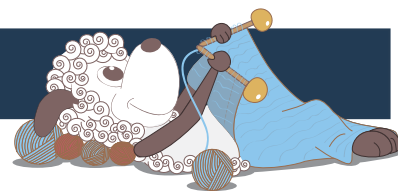


# Chrysalis - a light cardigan with embroidery



Design: Rachel Søgaard (knitting) & Karen Marie Dehn (embroidery)

*This generously sized cardigan in light wool is a perfect all-round garment. It looks elegant worn over a dress, but also stylishly casual worn with jeans. If you want to make your cardigan extra special, you can embroider a beautiful butterfly on the back – either in light, bright summer colours as shown, or in a different combination of colour that you create.*

1<sup>st</sup> English edition - January 2020 © Filcolana A/S  
English translation: Signe Strømgaard

## Materials for knitting

300 (300) 350 (350) g Saga by Filcolana in colour 303 (Sea Glass)  
Rundpind 3 mm, 40 og 80 cm  
Rundpind 2,5 mm, 100 cm  
Strømpepinde 2,5 og 3 mm  
Markører eller kontrastfarvet tråd

## Materialer for embroidery

Soluvlies (water soluble stabiliser)  
Arwetta Classic by Filcolana in colour 254 (Coral)  
Pernilla by Filcolana in colour 815 (Lavender Grey)  
Tilia by Filcolana in colour 341 (Winter Peach), 335 (Peach Blossom) and 255 (Limelight)  
DMC Mouliné in colour 14 (yellowish green), 20 (light salmon), 414 (greyish purple), 352 (melon), 844 (grey), 951 (creme salmon), 3042 (light purple), 3771 (salmon)  
Embroidery needle size 24 with a sharp point  
Embroidery frame  
Optional: textile spray adhesive

## Sizes

S (M) L (XL)

## Measurements

Body, chest: 80-88 (89-96) 97-104 (105-112) cm  
Cardigan, chest: 111 (119) 127 (135) cm





Sleeve length: 42 (43) 44 (45) cm  
 Total length: 70 (72) 74 (76) cm

## Gauge

28 sts and 35 rows in stockinette stitch on a 3 mm needle = 10 x 10 cm.

## Special techniques

**Skp:** slip 1 stitch, knit the next stitch, pass the slipped stitch over the knitted stitch.

**Tbl:** through the back loop.

## Special techniques

**Selvedge stitches (selv st):** The first and last stitch of every row is worked as knit on the RS and purl on the WS.

## Directions for knitting

First the pocket linings are worked. Then the body is worked bottom up to the pocket, where the pocket linings are joined and the body is worked to the armholes. The sleeves are worked in the round to the armholes, then the sections are joined for the yoke, which is worked with raglan decreases and a little saddle shoulder at the end. After this, stitches are picked up and knitted for the front edge along the front edges and around the neck and a rib edge is worked. Finally a lovely butterfly is embroidered on the back.

## Pocket linings

Cast on 36 (36) 40 (40) sts on a 3 mm needle and work 14 cm back and forth in stockinette stitch. End on a WS row. Break the yarn and let the sts rest on the needle.

Work a second lining the same way as the first.

## Body

Cast on 268 (288) 308 (328) sts on a 3 mm circular



needle with the long-tail cast-on method. Work back and forth in rib as follows:

Row 1 (WS): 1 selv st, \*p2, k2\*, repeat from \* to \* and end with 2 vr, 1 selv st.

Row 2: Work the sts at the present (knit the knit sts and purl the purl sts).

Work 7 cm of rib. Place a marker to mark the "side seams" 56 (60) 64 (68) sts in from either end of the work.

Continue in stockinette stitch until the work measures a total of 17 cm. End on a WS row.

Next row: 1 selv st, knit 15 (19) 23 (27) sts, work the next 34 (34) 38 (38) sts in k2, p2 rib for the pocket edge, knit until there are 50 (54) 62 (66) sts left on the needle, work the next 34 (34) 38 (38) sts in k2, p2 rib for the pocket edge, knit 15 (19) 23 (27) sts, 1 selv st.

Continue back and forth as established, working in stockinette stitch with the sts for the pocket edges in rib for a total of 11 rows.

Bind off the 34 (34) 38 (38) rib sts for each pocket edge on the next row (WS).

Next row (RS): 1 selv st, knit 14 (18) 22 (26) sts, \*work the next stitch together with the first stitch of the pocket lining as skp, knit to the last of the pocket lining sts, work the last of the pocket lining sts together with the first stitch on the body after the bound off pocket front sts as k2tog\*, knit to 1 stitch before the next set of bound off sts, repeat from \* to \*, then knit to the last stitch, 1 selv st.

Now work straight in stockinette stitch until the work measures 46 (47) 48 (49) cm. End on a RS row.

Next row: \*Purl to 6 sts before marker, bind off 12 sts (remove marker)\*, repeat from \* to \*, purl to end of row.

Let the sts rest on the needle, while the sleeves are being worked.

## Sleeves

Cast on 60 (64) 68 (72) sts on 2,5 mm double-pointed needles with the long-tail cast-on method. Join in the round and place a marker for the beginning of the round. Work 7 cm of k2, p2 rib.

Change to 3 mm double-pointed needles and work in the round in stockinette stitch.

Increase 14 (16) 18 (20) sts evenly across the first round, so there is a total of 74 (80) 86 (92) sts on the needle.

Now work an increase round every 6th round a total of 16 times as follows: K1, M1, knit to the last stitch of the round, M1, k1. There are now a total of 106 (112) 118 (124) sts on the needle.

Continue straight until the sleeve measures 42 (43) 44 (45) cm or desired length to armhole.

Next round: Bind off 6 sts, knit to the last 6 sts of the round, bind off 6 sts.

Let the remainings 94 (100) 106 (112) sts rest.

Work a second sleeve the same way as the first.

## Yoke with raglan decreases

Join the sleeve and body on the 3 mm circular needle

by placing the sleeve over where sts were bound off for the armholes on either side of the body. Place markers the 4 places where sleeves and body meet to mark where raglan decreases are worked. There are now a total of 432 (464) 496 (528) sts on the needle. Join the yarn from the RS and work back and forth in stockinette stitch with decreases at the markers as follows: 1 selv st, \*knit to 2 sts before the marker, k2tog, slip marker, skp\*, repeat from \* to \* 3 more times, knit to the last stitch, 1 selv st.

Work decreases as established every RS row a total of 37 (39) 41 (43) times. There are now 136 (152) 168 (184) sts on the needle. End on a RS row.

Now decreases on the body are worked on every row, while no more decreases are worked on the sleeves, so a little saddle shoulder is formed as follows:

Row 1 (WS): 1 selv st, \*purl to 2 sts before the marker, slip 2 sts knit-wise, one at a time, then slip the back onto the left needle and purl them through the back loop, slip marker, purl to next marker, slip marker, p2tog\*, repeat from \* to \* once more, purl to the last stitch, 1 selv st.

Row 2 (RS): 1 selv st, \*knit to 2 sts before marker, k2tog, slip marker, skp \*, repeat from \* to \* once more, knit to the last stitch, 1 selv st.

There are now 20 (22) 24 (26) sts on the saddle section.

Repeat these decreases a total of 12 (14) 16 (18) times. There are now 88 (96) 104 (112) sts on the needle.

Let the sts rest on the needle.

## Finishing

Front edge: Using a 2,5 mm circular needle, start at the hem at the right front edge and pick up and knit approx. 3 sts for every 4 rows along the right front edge to the resting sts on the needle, knit across the sts on the needle while at the same time decreasing 4 sts evenly, then pick up and knit sts down the left front edge the same as for the right edge all the way

to the hem. The total number of sts must be divisible by 4 + 2.

Work 8 cm back and forth in k2, p2 rib. Bind off in rib.

Weave in all ends.

Sew the little hole under each arm.

## Embroidery

Draw the motif onto the Soluvlies, place the soluvlies on the WS of the cardigan and secure it with pins. Baste along the contour lines with a single strand of embroidery thread in a colour that will be clearly visible on the RS. Take care that the basting stitches are longer on the RS than on the WS so they are easier to see. Place the work in the embroidery hoop with the soluvlies to the WS.

Embroider the body with satin stitch (Pernilla). Embroider long and short stitches from the body and outward on the wings as shown in the template – the first section towards the body is embroidered in Arwetta Classic, then 4 strands of DMC Mouliné is used, then Tilia and then one strand of DMC Mouliné is used on the top section of the wings. Now embroider single straight stitches with pink Tilia from the body and out. Embroider stem stitch with 2 strands of 2 DMC Mouliné along the outline of the wings. Embroider short and long stitch on tips of both wings with 2 strands of 2 DMC Mouliné. Embroider spots along the wings as shown in the template using satin stitch with a full strand of yarn on the needle – embroider approx. over one stitch of the knitting and 3 satin stitches for each spot. Embroider the antennae with stem stitch and 1 strand of 2 DMC Mouliné. Embroider eyes by making 2 french knots and 1 strand of 2 DMC Mouliné.

Remove any visible basting stitches, cut off any excess soluvlies, wash the cardigan gently and rinse thoroughly. Press the work from the WS.

Tip: Tilia can be a bit fiddly when you pull the yarn through the knitted fabric. Take care to straighten the

yarn so it doesn't form knots.

Tip: I recommend a small embroidery frame as it is then easier to get your fingers under the embroidery while you work.

The embroidery can be moved as you work progresses.

Info: Soluvlies is a water soluble material that helps stabilise your work and prevent distortion. It is also used to transfer the motif.

See how to embroider the stitches (in Danish) on Youtube – Karen Marie Dehn

