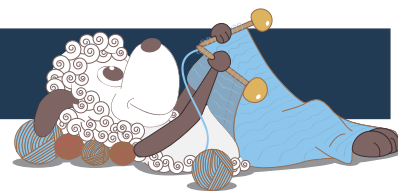


# Bryum - a classic colorwork sweater



Design: Rachel Søgaard

*A traditional colorwork sweater with a "Norwegian neckline". A very easy project worked in the gorgeous Peruvian Highland Wool. Work this design either as a men's sweater or as an oversize women's design.*

4th English edition - January 2020 © Filcolana A/S  
English translation: Signe Strømgaard

## Materials

Peruvian Highland Wool by Filcolana:  
Main color (MC): 350 (400) 400 (450) g in color 270 (Midnight blue)  
Contrast color (CC): 250 (250) 300 (300) g in color 957 (Very light grey)  
4 mm and 5 mm circular needle  
4 mm and 5 mm double-pointed needles

## Sizes

S (M) L (XL)

## Measurements

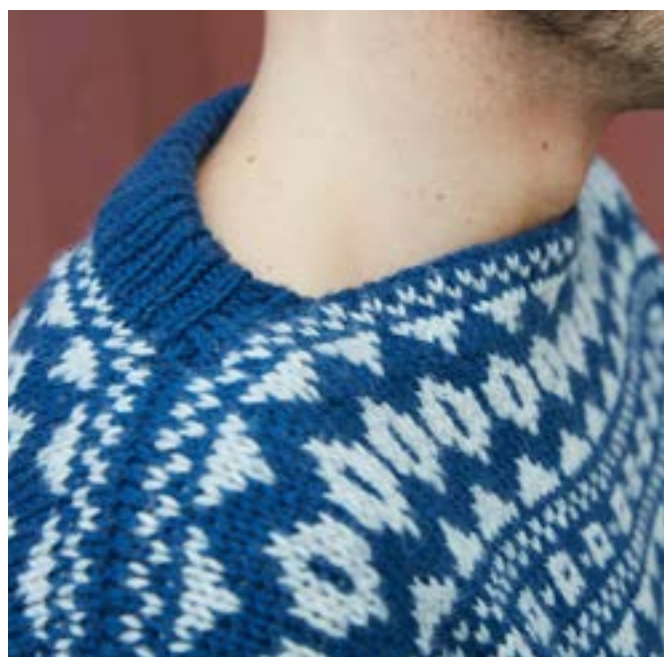
Sweater, chest: 109 (117) 126 (134) cm  
Total length: 65 (67) 69 (71) cm  
Sleeve length: 51 cm

## Gauge

21 sts and 22 rows in stockinette stitch from chart on 5 mm needles = 10 x 10 cm

## Directions for knitting

Body and sleeves are worked from the bottom up. Afterwards armholes are steeked out and the sleeves are sewn in.



## Body

Cast on 228 (246) 264 (282) sts with MC on a 4 mm circular needle. Join in the round, place a marker for the beginning of the round and work in k1, p1 ribbing for 8 cm. Change to a 5 mm circular needle, and work in 1 round of stockinette stitch.

Work in charted pattern, beginning as indicated for your size until work measures 45 (46) 47 (48) cm. Bind off stitches for the armholes on the next row: Bind off first stitch, work until there are 113 (123) 131 (141) sts on the needle after the bound off sts, bind off 1 stitch, work to end of round. There are now 113 (123) 131 (141) sts for the front and 113 (121) 131 (139) sts for the back.

Next round: Cast on 3 new steeking stitches over where sts were bound of. These stitches are the steeking stitch which are not counted in the pattern. Work the steeking stitches in vertical stripes alternating 1 stitch in each color.

Continue in the round until the work measures 65 (67) 69 (71) cm. Bind off the 3 steeking sts either side. Break the yarn.

## Neck edge front

Let the 29 (33) 37 (40) shoulder sts at either end of the front rest on stitch holders. Work back and forth on remaining sts in MC, beginning with a RS row. Purl 1 row from the RS, then continue back and forth in stockinette stitch for 4 cm. Bind off.

## Neck edge back

Let the 29 (33) 37 (40) shoulder sts at either end of the back rest on stitch holders. Work back and forth on remaining 55 (55) 57 (59) sts in MC, beginning



with a RS row. Pick up and knit 1 stitch at the beginning and end of the first row and work back and forth in k1, p1 ribbing for 7 cm. Bind off.

## Shoulders

Place the sts for both front and back of the left shoulder back on needles and bind them off together using the 3-needle bind-off. Repeat for the right shoulder.

Fold the rib edge double, and sew the bind-off edge to the WS of the work.

Fold the front neck edge along the purl ridge and sew it to the WS.

Fold the ends of the rib inward so they form little triangles and sew the sides of the rib edge to the purl ridge along the front neck edge.

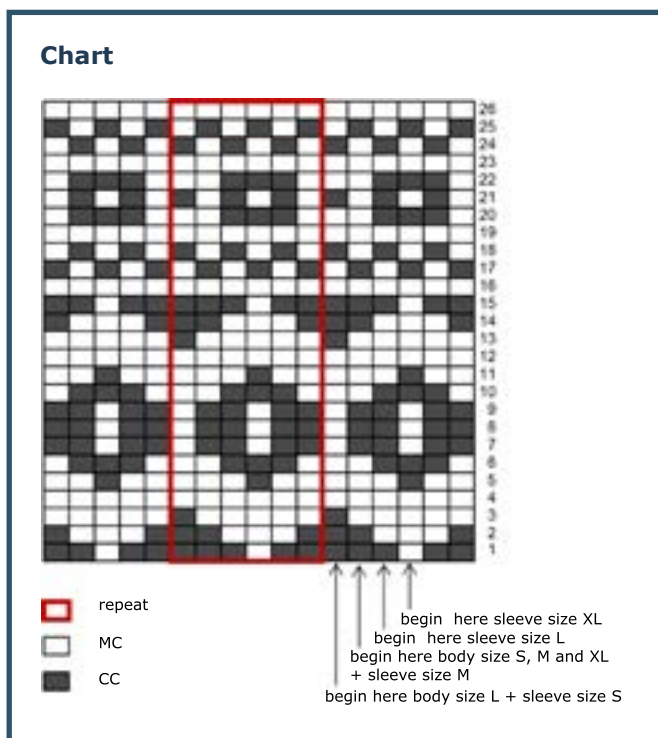
## Sleeves

Cast on 44 (46) 48 (50) sts with MC on 4 mm double-pointed needles. Join in the round, place a marker for the beginning of the round and work in k1, p1 ribbing for 8 cm. Change to a 5 mm circular needle, and work in 1 round of stockinette stitch. Mark the first stitch of the round. This stitch is worked in MC throughout and is not part of the pattern. Now work chart beginning as indicated for your size.

Work and increase round on round 2 and then every 5th (alternately 4th and 5th) 4th (4th) round until there are 84 (88) 92 (96) sts on the needle.

Increase round: K marked stitch, M1, work in pattern to end of round, M1.

New sts are worked in pattern.



Work straight in pattern until the sleeve measures 50 cm. Bind off the marked stitch, the back and forth in reverse stockinette stitch (purl on RS, knit on WS) for 2 rows. Bind off.

Work a second sleeve the same way as the first.

## **Finishing**

Steeking: Secure the steek either by hand or using a sewing machine - either using a regular zig-zag or a 3-stitch zig-zag. Sew on either side of the middle steeking stitch. Do this both mid front and on the armhole steeks. Cut the steeks.

Sew the sleeves to the armholes. Fold the little edges of reverse stockinette over the cut steek edges on the WS and sew is down.

Rinse the work, put it through a (dry) spin cycle and lay it on a flat surface to dry.