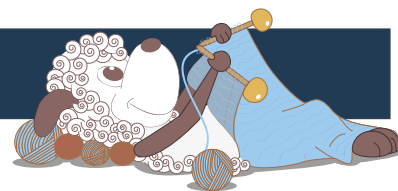


Borgen - a beautiful sweater with a round yoke



Design: Rachel Søgaard

Christiansborg Castle located on The Royal Dockyard in the centre of Copenhagen, houses the Danish parliament, the Supreme Court and the Ministry of the State. An imposing building, which has burned down and has been rebuilt more than once. Some would call it the centre of power, but there is also a sense that this building belongs to the people. You can walk across the castle square to the riding ground and stables, you can eat in the restaurant located in the tower or just enjoy the view. The latest addition is a ring of large granite spheres placed around the perimeter of the castle square as a ward against terrorism – a beautiful addition that just had to form the pattern of the hem of this sweater.

1st English edition - August 2020 © Filcolana A/S
English translation: Signe Strømgaard

Materials

Colour A: 200 (200) 250 (250) g Saga by Filcolana in colour 122 (Rock)

Colour B: 50 (50) 50 (50) g Saga by Filcolana in colour 950 (Very Light Grey melange)

2,5 mm and 3 mm circular needle, 80 cm
2,5 mm and 3 mm double-pointed needles
Stitch markers

Sizes

S (M) L (XL)

Measurements

Body, chest: 80-88 (89-96) 97-104 (105-112) cm

Sweater, chest: 97 (105) 113 (121) cm

Sleeve length: 45 cm (all sizes)

Total length: 54 (56) 58 (60) cm



Strikkefasthed

29 m og 40 p i glatstrikning på p 3 mm = 10 x 10 cm.

Special abbreviations

M1L (Make 1 Left): Insert the left needle from front to back under the horizontal strand between stitches, lift the strand onto the right needle, then knit it through the back loop.

M1R (Make 1 Right): Insert the left needle from back to front under the horizontal strand between stitches, lift the strand onto the right needle, then knit it.

Skp: slip 1 stitch, knit the next stitch, pass the slipped stitch over the knit stitch.

Special techniques

Short rows - GSR (German short rows): Work to where the turn needs to be, turn, then slip the first stitch purl-wise with the yarn held in front. Bring the working yarn up and over the needle and down on the other side, pulling hard enough on the yarn to make the stitch on the needle look like a double stitch (the 2 legs of the stitch are visible). Continue row as pattern describes.

When working across the stitch that looks like a double stitch, work it as 1 stitch, either knitting or purling the 2 legs together, as the pattern describes.

Directions for knitting

The sweater is worked from the bottom up. First the sleeve and body are worked in the round to the armholes.

Then the parts are joined for the yoke, which is worked in the round with short rows to raise the back. After the short rows have been worked, the pattern is worked with decreases. The neck edge is finished with rib.

Body

Cast on 280 (304) 328 (352) sts on a 2,5 mm circular needle with colour A. Join in the round and place a marker for the beginning of the round and a second marker after 140 (152) 164 (176) sts.

Work in rib as follows:

Round 1: Knit to end of round.

Round 2: P1, *k2, p2*, repeat from * to *, end with k2, p1.

Repeat these 2 round for a total of 16 rounds. Change to a 3 mm needle and work 3 rounds in stockinette stitch.

Work the 7 rounds of Chart 1, then work straight in stockinette stitch with colour A until the body measures approx. 33 (34) 35 (36) cm or desired length to armhole.

Bind off sts for the armholes as follows: Bind off 7 (8) 9 (10) sts, knit to 7 (8) 9 (10) sts before the next marker, bind off 14 (16) 18 (20) sts, knit to the last 7 (8) 9 (10) sts of the round, bind off these 7 (8) 9 (10) sts.

Let the work rest on the needle, while the sleeves are worked.

Chart 2

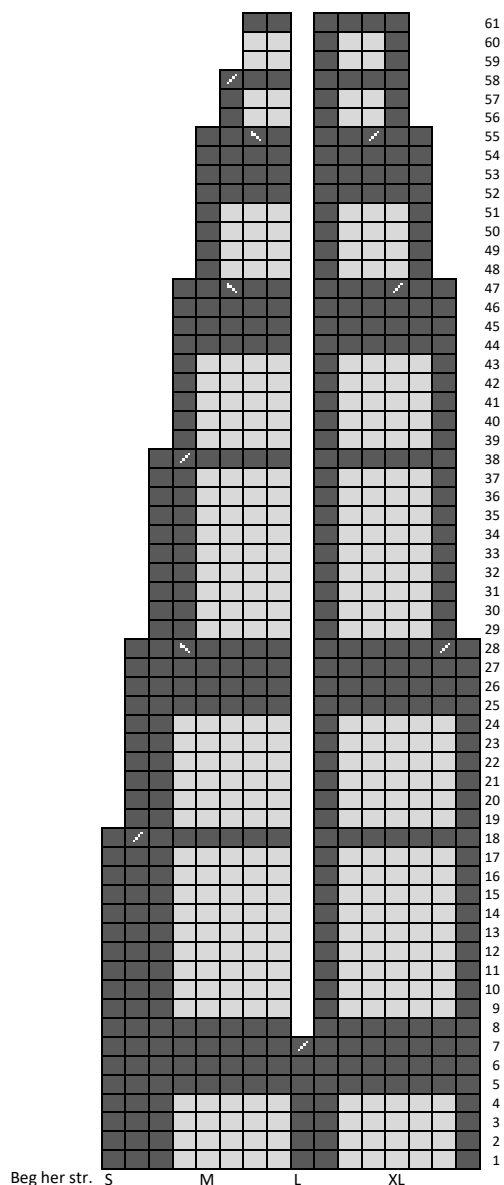
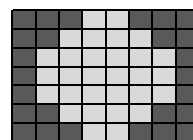


Chart 1



- Colour A
- Colour B
- K2tog
- Skp

Sleeves

Cast on 56 (60) 64 (68) sts on 2,5 mm double-pointed needles with colour A, and work in the round in rib as follows:

Round 1: Knit to end of round.

Round 2: P1, *k2, p2*, repeat from * to *, end with k2, p1.

Repeat these 2 rounds for a total of 35 rounds.

Change to 3 mm double-pointed needles and work 3 rounds in stockinette stitch, while increasing 8 (12) 16 (20) sts evenly across the first round. There are now a total of 64 (72) 80 (88) sts on the needle.

Work the 7 rounds of Chart 1, then work in stockinette stitch with increases on the first round as follows:

K1, M1L, knit to the last st, M1R, k1.

Work increases every 10th round a total of 8 (8) 8 (8) times. There are now a total of 80 (88) 96 (104) sts on the needle.

Work straight in stockinette stitch until the sleeve measures 45 cm or desired length to armhole.

Next round: Bind off 7 (8) 9 (10) sts, knit to the last 7 (8) 9 (10) sts of the round, bind off these 7 (8) 9 (10) sts.

Let the sts rest and work a second sleeve the same way as the first.

Yoke

Join the sleeves to the body on the circular needle by placing the sleeve sts over where sts were bound off for the armholes, while placing a marker each of the 4 places where sleeves and body meets. There are now a total of 384 (416) 448 (480) sts on the needle. The beginning of the round is at the marker between the right sleeve and the back (marker 1).

Now work short rows as follows:

Knit to 10 sts before marker 3 (marker between left sleeve and front), turn. Purl to 10 sts before marker 4 (marker between right sleeve and front), turn.

Turn 4 more times on either side, each time 10 sts before the last turn on the same side.

After the final turn (on the right sleeve), 1 round is knitted across all sts, and the 2 legs of each turning st are knitted together.

Remove marker 2, 3 and 4, leaving only marker 1 that marks the beginning of the round.

Knit 2 (6) 10 (14) rounds. Start as indicated for your size and work all rounds of Chart 2.

When all the rows have been worked, there are 144 (156) 168 (180) sts left on the needle.

Knit 1 round in colour A, while at the same time decreasing the total number of sts to 124 (132) 140 (148) sts.

Now work in rib as follows:

Round 1: *K2, p2*, repeat from * to * to end of round.

Round 2: Knit to end of round.

Repeat these 2 rounds for a total of 11 rounds.

Bind off knit-wise.

Finishing

Sew the little hole under each sleeve. Weave in all



ends.

Wash the finished work according to the instructions on the yarn label, carefully press out the water, then lay it on a flat surface to dry.