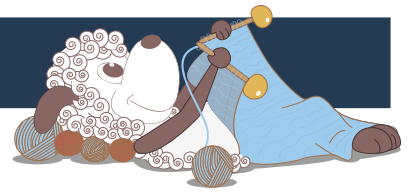


Galianthus - a knitted cowl



Design: Nanna Gudmand-Høyer

A 70s knitting movement in Denmark called "Hønsestriik" ("chicken knitting") which centered around free (non pattern) knitting in many colors and and imaginative patterns, was the inspiration for this cowl. In the end the resemblance to the original "hønsestriik" is minimal, and the cowl has a much more graphic look, which I loved it so much I immediately had to knit up a second color combination.

1st English edition, February 2013, © Filcolana A/S
English translation: Signe S. Simonsen

Materials

Cinnia by Filcolana:

White version: 100 g in color 101 (natural white) (MC), 30 g in color 286 (purple) (CC1), color 289 (petrol) (CC2) and color 290 (bordeaux) (CC3).
Petrol version: 100 g in color 289 (petrol) (MC), 30 g in color 287 (straw) (CC1), color 291 (cerise) (CC2) and color 280 (baltic) (CC3).
4 and 5 mm circular needle, 60 or 80 cm long
1 marker

Sizes

One size; designed to loop twice around the neck.

Measurement

Circumference: 120 cm



Gauge

20 sts and 27 rows in stockinette stitch on a 5 mm needle = 10 x 10 cm.

Abbreviations

MC Main color
CC1 Contrast color 1
CC2 Contrast color 2
CC3 Contrast color 3

Directions for knitting

The cowl is worked in the round on a circular needle. First the edge is worked, then the charted pattern, then the second edge. In the charted colorwork, the main color is used throughout.

When working with 2 colors one will appear more prominent than the other. This is called the dominant color. The pattern indicates which color is to be worked as the dominant when.



Cowl

Cast on 240 sts using CC1 and a 4 mm circular needle. Join in the round and place a marker for the beginning of the round. Knit 5 rounds.

Turn the work (so the WS of the stockinette stitch becomes the RS).

Change to a 5 mm circular needle and knit 3 rounds in MC.

Work Chart A with MC and CC2. Work CC2 as the dominant color.

Knit 3 rounds with MC.

Work Chart B with MC and CC3. Work MC as the dominant color.

Knit 3 rounds with MC.

Work Chart C with MC and CC1. Work CC1 as the dominant color.

Knit 3 rounds with MC.

Work Chart A with MC and CC3. Work CC3 as the dominant color.

Knit 3 rounds with MC.

Work Chart B with MC and CC2. Work MC as the dominant color.

Knit 3 rounds with MC.

Work Chart B with MC and CC1. Work MC as the dominant color.

Knit 3 rounds with MC.

Work Chart D with MC and CC2. Work CC2 as the dominant color.



Knit 3 rounds with MC.

Change to a 4 mm circular needle and CC3. Knit 1 round. Turn the work. Knit 5 rounds from the WS of the work. Bind off loosely.

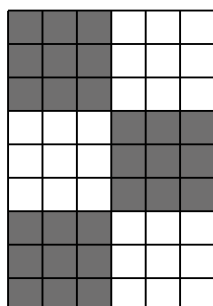


Chart A

Repeat pattern across round.

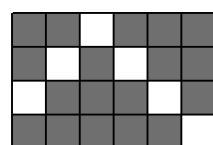
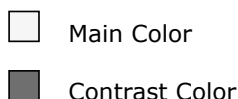


Chart B

Repeat pattern across round.

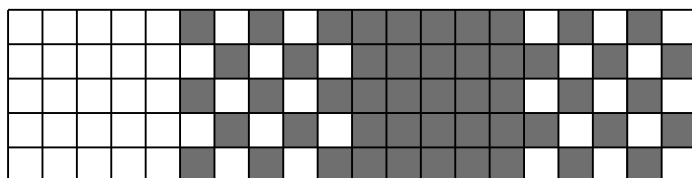


Chart C

Repeat pattern across round.

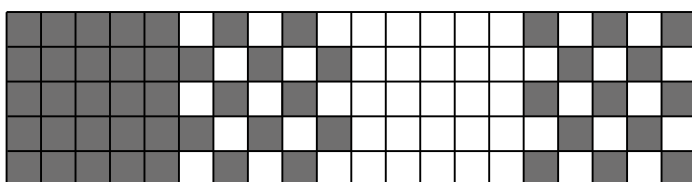


Chart D

Repeat pattern across round.