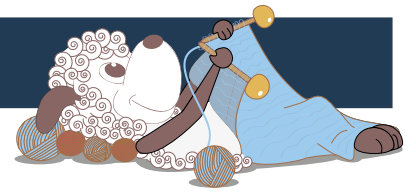


Skumring - a lovely summer shawl



Design: Karen Skriver Lauger

Summer nights on the porch. The gentle light from the waning day. A light and soft shawl over the shoulders, perfect for the cool hours of the twilight.

Skumring (Danish for twilight) is a summer shawl with beautiful lines of garter stitch and lace, perfect for a summers night.

1. English edition - January 2018 © Filcolana A/S

Materials

200 g Merci from Filcolana in color 1390 (mint)
4 mm circular needle, 80 cm

Sizes

Onesize

Measurements

Along the top edge (tip to tip): 215 cm
Depth (widest spot): 45 cm

Gauge

22 sts and 22 garter ridges (44 rows) in garter stitch on size 4.0 mm needles = 10 x 10 cm.

Special abbreviations

k1 f&b (increase): Knit into both front and back loop (=1 stitch increased).

Skp: slip 1 stitch, knit the next stitch, pass the slipped stitch over the knit stitch.

Sk2p (double decrease): Slip 1 stitch knitwise, k2tog, pass the slipped stitch over.

Yo: wrap the yarn once around the needle

About the pattern

The shawl is knit from the middle of the neck and out and down toward the outer edge. Increases are worked on all rows, which gives the shawl its crescent



shape. The pattern alternates between garter stitch and lace pattern.
All lace patterns are shown in charts.

Charts

The charts show all lace patterns from the right side (RS). All rows are shown in the charts. The charts are read from the bottom and up and from the right to the left on the RS and from the left to the right on the wrong side (WS).

Chart A – first lace pattern

Chart B – second lace pattern

Pattern

Cast on 5 sts on size 4 mm needle.

Row 1 (WS): k1, k1 f&b, k1, k1 f&b, k1.

Row 2 (RS): k2, (k1, yo, k1) into next stitch, k1, (k1, yo, k1) into next stitch, k2.

Row 3: k2, k1 f&b, k to the last 3 sts, k1 f&b, k2.

Row 4: k2, (k1, yo, k1) into next stitch, k to the last 3 sts, (k1, yo, k1) into next stitch, k2.

There are now 17 sts on the needle.

Work Row 3-4 another 11 times. Then work Row 3 once more. There are now 87 sts on the needle.

First lace pattern

Row 5 (RS): k2, (k1, yo, k1) into next stitch, work chart A (repeat sts in the box) to the last 3 sts, (k1, yo, k1) into next stitch, k2.

Row 6 (WS): k2, k1 f&b, work chart A (repeat sts in the box) to the last 3 sts, k1 f&b, k2.

Repeat Rows 5-6 until all 17 rows from chart A have been worked, end with Row 5 from RS.

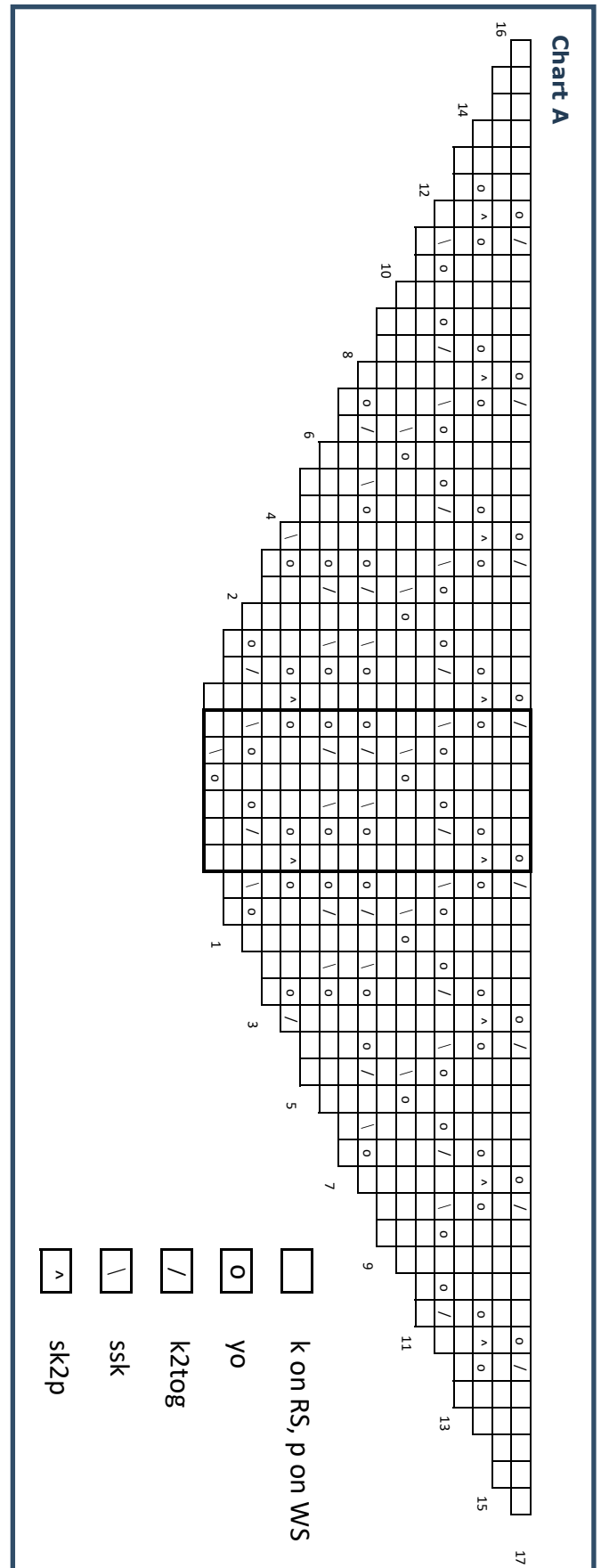
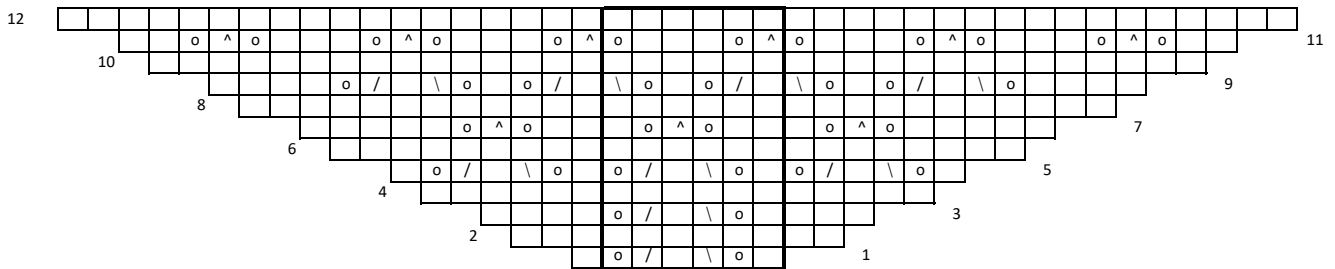


Chart B



There are now 139 sts on the needle.

Garter stitch and lace pattern

++

Now alternate between garter stitch and lace pattern:

Work Rows 3-4 a total of 15 times. Then work Row 3 once more.

Work lace pattern by working Rows 5-6 until all 17 rows from chart have been worked. End with Row 5 from RS.

++

Work from ++ to ++ a total of 2 times. End second time by working Row 16 from chart A. There are now 423 sts on the needle.

Second lace pattern

Work the lace pattern from chart B as follows:

Row 7 (RS): k2, (k1, yo, k1) into next stitch, work chart B (repeat sts in the box) to the last 3 sts, (k1, yo, k1) into next stitch, k2.

Row 8 (WS): k2, k1 f&b, work chart B (repeat sts in the box) to the last 3 sts, k1 f&b, k2.

Work Rows 7-8 until 3 full repeats of the pattern from chart B has been worked. Note that on the last repeat end with Row 11 from chart B.

Work Row 3 and 4 once, and then Row 3 once more. Bind off on the next row (RS) as follows: k1, *place 1 stitch from the right needle to the left needle, k2tog tbl*, repeat from * to * until all sts have been bound off.

Finishing

Weave in all ends. Wash the shawl gently and block it so the lace pattern opens up.

