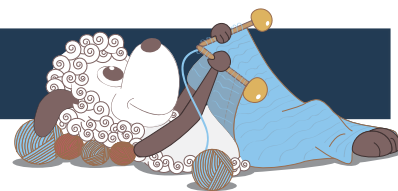


# Grenen - a light, soft shawl



Design: Karen Skriver Lauger



"Grenen" is part of Filcolana's "Colours of the Scandinavian Summer" collection. For this collection our team of designers have found inspiration in the incredible Scandinavian light and colours in the works of the Skagen Painters.

This design is inspired by the painting "Havet i oprør. Skagens gren" by Holger Drachmanns. The lace patterns in the shawl tell the story of sea currents that meet and merge, foam and breaks.

The shawl is light and soft as sea foam and fog.

1st English edition - August 2017 © Filcolana A/S

## Materials

150 g New Zealand lammeuld from Filcolana in colour 950

100 g Tilia fra Filcolana in colour 101

Circular needle size 6 mm, 80 cm

Marker

## Size

One size

## Measurements

Approx. 220 cm along the top edge

120 cm deep at neck

## Gauge

15 sts in stockinette stitch or lace pattern on size 6 mm needles (before blocking) = 10 x 10 cm.

This corresponds to that one repeat of the lace pattern is 18 cm wide and 14 cm tall after blocking.

## About the pattern

The shawl is knit from the middle of the neck and out and down toward the edge. Increases are worked on



all RS-rows. All lace patterns are shown in charts. The shawl is worked holding a strand of each yarn together throughout the shawl.

## Charts

Both charts are shown from the RS. Only RS rows are shown (on WS all sts are purled). The charts are read from the bottom up and from right to left.

## Pattern

Cast on 5 sts on size 6 mm needle using a strand of each yarn held together.

Row 1 (RS): K1, yo, k1, yo, place marker, k1, yo, k1, yo, k1.

Row 2 (WS): K1, p to last st, k1.

Now work the lace pattern from chart A as follows:

Row 3 (RS): K1, chart A, slip marker to right needle, k1, chart A, k1.

Row 4 (WS): K1, p to last st, k1

Repeat Row 3 and 4 until all 54 rows from chart A has been worked = 117 sts on the needle.

Continue working Row 3 and 4, but repeat Rows 33-54 from chart A until these 22 rows have been worked an additional 5 times = 337 sts.



*Holger Drachmann, Havet i oprør. Skagen Grenen, 1906*  
Skagen Museum  
Public Domain

The sts in the box show the pattern repeat, which is repeated across the row.

Now work the transition to the edge as follows:

Row 5 (RS): K1, chart B (repeat sts in the box), slip marker to right needle, k1, chart B (repeat sts in the box), k1.

Row 6 (WS): K1, p to last st, k1.

Repeat Row 5 and 6 until all 29 rows from chart B have been worked.

Bind off all 397 sts on the next row (WS) as follows: P1, \*p1, slip the 2 sts from the right to the left needle and knit them together through the back loop\*, repeat from \* to \* until all sts have been bound off.

## Finishing

Weave in all ends. Wash the shawl gently and block it so that the lace opens and the edge waves gently.

# Grenen

Chart A

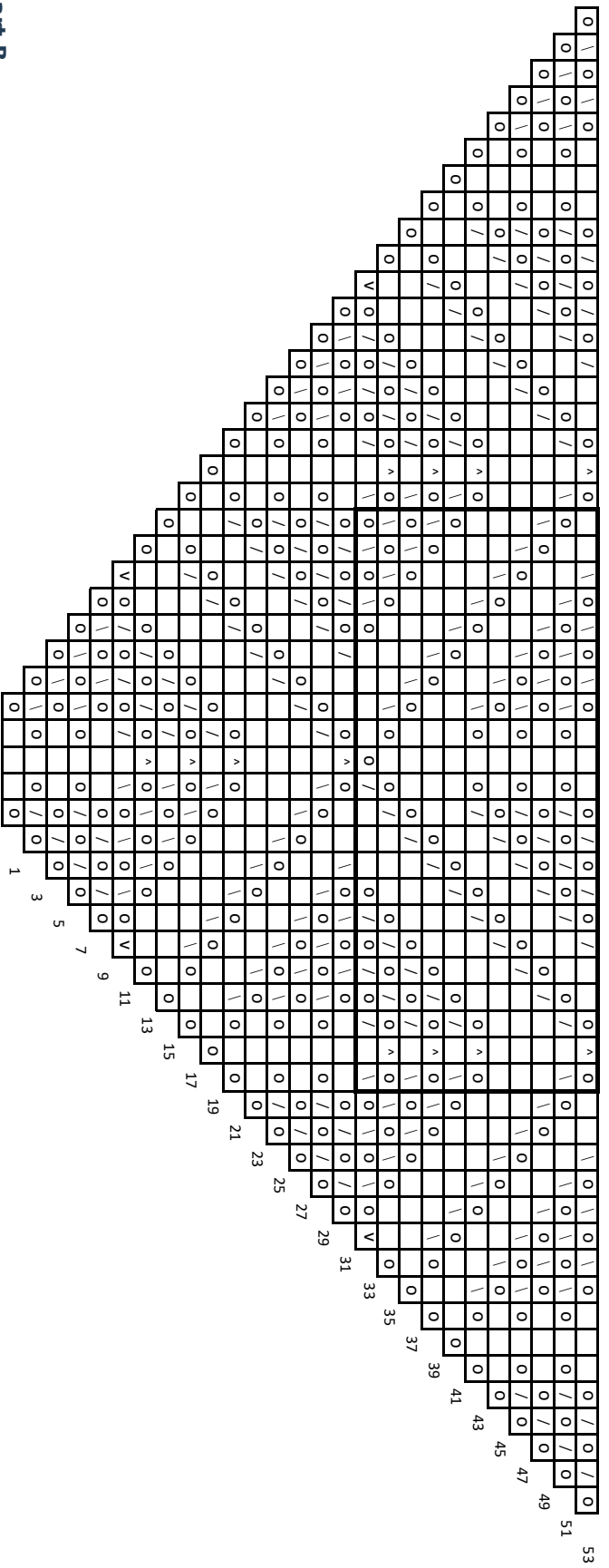
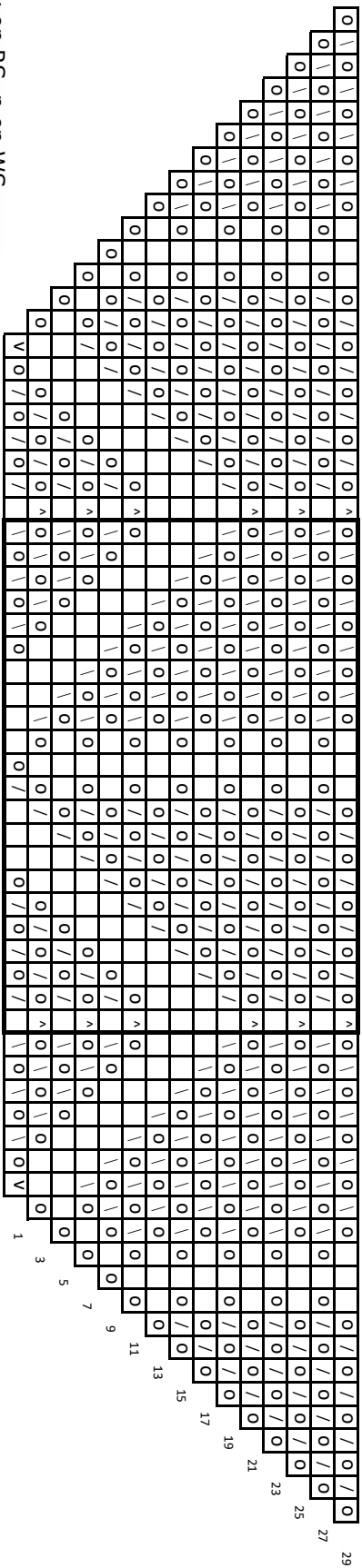


Chart B



- k on RS, p on WS
- yarn over
- k2tog
- ssk

- v slip 1 stitch knit-wise, k2tog, pass slipped stitch over
- p on RS, k on WS
- V M1