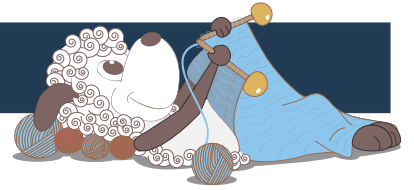


Georgine - a beautiful, long cardigan



Design: Karen Skriver Lauger



"Georgine" is part of Filcolana's "Colours of the Scandinavian Summer" collection. For this collection our team of designers have found inspiration in the incredible Scandinavian light and colours in the works of the Skagen Painters.

The designer Karen Skriver Lauger has found the inspiration for the "Georgine" design in the beautiful warm and vibrant colours of the flowers and the beautiful blue wall in Anna Syberg's painting "Georginer i et glas" (Dahlias in a glass).

3rd English edition - October 2018 © Filcolana A/S

Materials

Main colour (MC): 350 (400) 450 (500) 550 g Pernilla from Filcolana in colour 819 (Raindrop melange)
Contrasting colours (CC) (approx. 25 g of each):
A - 825 (Acacia melange)
B - 807 (Boysenberry melange)
C - 826 (Cantaloupe melange)
D - 101 (Natural white)
E - 317 (Cerise)
F - 821 (Macaron melange)
G - 820 (Isabella melange)
Circular needle size 4 mm, 80 cm and 120 cm (for the edge), and double pointed needles (dnp) size 4 mm
A piece of scrap yarn for provisional cast on
Markers

Sizes

S (M) L (XL) XXL

Measurements

Body, chest: 84-88 (90-94) 100-104 (111-115) 121-125 cm
Cardigan, chest: 90 (96) 106 (117) 127 cm
Hip: 97 (104) 114 (125) 135 cm



Sleeve length: 43 (44) 47 (48) 51 cm
 Full length: 78 (80) 82 (84) 86 cm

Gauge

23 sts and 32 rows in stockinette stitch on size 4 mm
 = 10 x 10 cm.

Special abbreviations

inc (increase): Pick up the loop between two sts onto the needle and knit or purl it through the back loop (as it fits with the knitting).

ssk (decrease): slip 2 sts knit-wise one after the other, slip them back onto the left needle and knit them together through the back loop.

Sl 1 wyib: Slip 1 st purl-wise with the yarn held to the back.

Sl 1 la wytf: Slip 1 st purl-wise with the yarn to the front.

p5 wrapping yarn twice for each st: insert the right needle into the next stitch to purl, wrap yarn twice around needle before pulling it through to create the new (double) stitch.

About the pattern

The cardigan is knit from the bottom up, with the body worked separately to the arm holes. The sleeves are knit separately and joined to the body. The yoke is shaped with raglan decreases. As a finishing touch an i-cord is worked all the way round the edges of the cardigan.

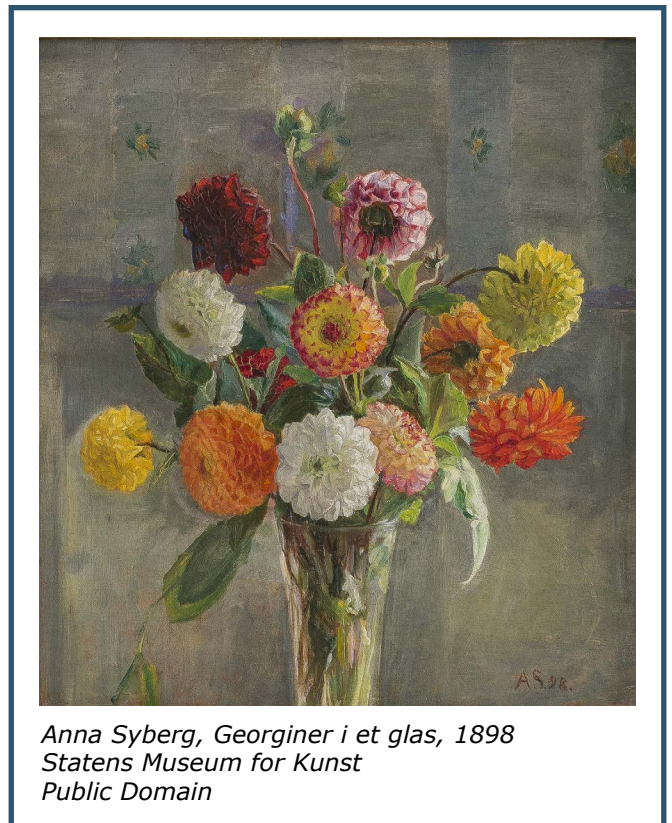
The cardigan features a beautiful stitch pattern with contrasting "flowers". These flowers are worked at the bottom of the body, and then in a narrow section all the way up both edges. You never knit with more than one colour at a time.

Note: It is recommended to weave or knit in the ends as you work, as there are many ends.

Colour sequence

The pattern shifts between the main colour and the contrasting colours. The contrasting colours follow this sequence: A, B, C, D, E, F, and G, and are then repeated again and again. Note that you only work 2 rows with a contrast colour before going back to the main colour, and that the contrasting colour changes every time.

Stitch pattern



Anna Syberg, *Georginer i et glas*, 1898
 Statens Museum for Kunst
 Public Domain

Row 1 (RS) – CC: K1, *sl 1 wyib, k1, (k1, yo, k1, yo, k1) into next st, k1*, repeat from * to * to last 2 sts, sl 1 wyib, k1.

Row 2 (WS) – CC: K1, *sl 1 wytf, k1, p5 wrapping yarn twice for each st, k1*, repeat from * to * to last 2 sts, sl 1 wytf, k1.

Row 3 – MC: K1, *k2, sl 5 wyib dropping the extra wrap from each stitch, k1*, repeat from * to * to last 2 sts, k2.

Row 4 – MC: K1, *k1, p1, sl 5 wytf, p1*, repeat from * to * to last 2 sts, k2.

Row 5 – MC: K1, *k1, k2tog, sl 3 wyib, ssk*, repeat from * to * to last 2 sts, k2.

Row 6 – MC: K1, *k1, p1, sl 3 wytf, p1*, repeat from * to * to last 2 sts, k2.

Row 7 – MC: K1, *k1, k2tog, sl 1 wyib, ssk*, repeat from * to * to last 2 sts, k2.

Row 8 – MC: K1, *k2, sl 1 wytf, k1*, repeat from * to * to last 2 sts, k2.

Row 9 – MC: K1, *k2, k1 tbl, k1*, repeat from * to * to last 2 sts, k2.

Row 10 – MC: K1, *k2, p1, k1*, repeat from * to * to last 2 sts, k2.

Row 11 – CC (remember to pick the next colour in the sequence): K3, *sl 1 wyib, k1, (k1, yo, k1, yo, k1) into next st, k1*, repeat from * to * to last 4 sts, sl 1 wyib, k3.

Row 12 – CC: K3, *sl 1 wytf, k1, p5 wrapping yarn twice for each st, k1*, repeat from * to * to last 4 sts, sl 1 wytf, k3.

Row 13 – MC: K3, *k2, sl 5 wyib dropping extra wraps, k1*, repeat from * to * to last 4 sts, k4.
 Row 14 – MC: K3, *k1, p1, sl 5 wytf, p1*, repeat from * to * to last 4 sts, k4.
 Row 15 – MC: K3, *k1, k2tog, sl 3 wyib, ssk*, repeat from * to * to last 4 sts, k4.
 Row 16 – MC: K3, *k1, p1, sl 3 wytf, p1*, repeat from * to * to last 4 sts, k4.
 Row 17 – MC: K3, *k1, k2tog, sl 1 wyib, ssk*, repeat from * to * to last 4 sts, k4.
 Row 18 – MC: K3, *k2, sl 1 wytf, k1*, repeat from * to * to last 4 sts, k4.
 Row 19 – MC: K3, *k2, k1 tbl, k1*, repeat from * to * to last 4 sts, k4.
 Row 20 – MC: K3, *k2, p1, k1*, repeat from * to * to last 4 sts, k4.

The flower stitch pattern is a repeat of these 20 rows, where the contrasting colours change following the colour sequence.

Body

Cast on 223 (239) 263 (287) 311 sts on a size 4 mm needle using a provisional cast on using scrap yarn. Join the main colour and work 4 rows in garter stitch (k all sts).

Now work the flower stitch pattern until you have worked a full colour sequence – i.e. end with row 10 from the pattern.

On the last row (Row 10) place markers as follows: Work 15 sts in pattern, place marker, work 41 (45) 51 (57) 63 sts in pattern, place marker (side seam), work 111 (119) 131 (143) 155 sts in pattern, place marker (side seam), work 41 (45) 51 (57) 63 sts in pattern, place marker, work 15 sts in pattern.

From here on work in flower stitch pattern over the first and last 15 sts, i.e. the front edges, while working in stockinette stitch over the remaining sts.

Work as follows at the beginning of the work:

Row 1 and 11: Work in pattern to marker, remove marker, turn work.

Row 2 and 12: Yo, place marker, work 15 sts in pattern (=to end of row).

Row 3 and 13: Work in pattern to marker, slip marker to right needle, work the yo and the following st as k2tog, k to marker, slip marker to right needle, join CC and work Row 1 (11) and 2 (12) over the 15 sts, then continue working Row 3 (13) with MC over the same sts.

That way the pattern is symmetrical over the front edges, but remember to work the rest of the sts in stockinette stitch.

At the same time begin the decreases for the waist shaping:

Decrease on every 10th row (RS) as follows: *Work to 3 sts before side seam marker, k2tog, k1, slip marker to right needle, k1, ssk*, repeat from * to * and then work to end of row.

Decrease 4 sts as above on every 10th row a total of 5 (5) 6 (6) 7 times. There are now 203 (219) 239 (263) 283 sts on the needle.

Work 10 rows after the last decrease, then start increasing on every 10th (10th) 10th (10th) 8th row (RS) as follows: *Work to 2 sts before side seam marker, inc, k1, slip marker to right needle, k1, inc*, repeat from * to * and then work to end of row.

Increase 4 sts like this a total of 2 (2) 3 (3) 4 times. There are now 211 (227) 251 (275) 299 sts on the needle.

Work straight up until the body measures 59 (60) 61 (62) 63 cm, or has the desired length under the sleeve. End with a RS row.

On the next row (WS) divide into back and fronts as follows: Work 47 (51) 57 (60) 66 sts, bind off 12 (12) 12 (18) 18 sts for arm hole, work 93 (101) 113 (119) 131 sts in stockinette stitch, bind off 12 (12) 12 (18) 18 sts for arm hole, work 47 (51) 57 (60) 66 sts.

Place the body on hold while you knit the sleeves.

Sleeves

Cast on 56 (56) 60 (60) 66 sts on dpns size 4 mm (or a long circular needle for magic loop). Place a marker at the beginning of the round and work 4 rounds in garter stitch (k 1 round, p 1 round), then begin knitting the flower stitch pattern in the round as follows:

Row 1 (RS) – CC: *sl 1 wyib, k1, (k1, yo, k1, yo, k1) into next st, k1*, repeat from * to * to end of round.

Row 2 (VS) – CC: *sl 1 wyib, p1, k5 wrapping yarn twice for each st, p1*, repeat from * to * to end of round.

Row 3 – MC: *k2, sl 5 wyib dropping extra wraps, k1*, repeat from * to * to end of round.

Row 4 – MC: *p1, k1, sl 5 wyib, k1*, repeat from * to * to end of round.

Row 5 – MC: *k1, k2tog, sl 3 wyib, ssk*, repeat from * to * to end of round.

Row 6 – MC: *p1, k1, sl 3 wyib, k1*, repeat from * to * to end of round.

Row 7 – MC: *k1, k2tog, sl 1 wyib, ssk*, repeat from * to * to end of round.

Row 8 – MC: *p2, sl 1 wyib, p1*, repeat from * to * to end of round.

Row 9 – MC: *k2, k1 tbl, k1*, repeat from * to * to end of round.

Row 10 – MC: *p2, k1, p1*, repeat from * to * to end of round.

Row 11 – CC (remember to pick the next colour in the sequence): K2, *sl 1 wyib, k1, (k1, yo, k1, yo, k1) into next st, k1*, repeat from * to * to last 2 sts, sl 1 wyib, k1.

Row 12 – CC: P2, *sl 1 wytf, p1, k5 wrapping yarn twice for each st, p1*, repeat from * to * to last 2

sts, sl 1 wytf, p1.

Row 13 – MC: K2, *k2, sl 5 wyib dropping extra wraps, k1*, repeat from * to * to last 2 sts, k2.

Row 14 – MC: P2, *p1, k1, sl 5 wyib, k1*, repeat from * to * to last 2 sts, p2.

Row 15 – MC: K2, *k1, k2tog, sl 3 wyib, ssk*, repeat from * to * to last 2 sts, k2.

Row 16 – MC: P2, *p1, k1, sl 3 wyib, k1*, repeat from * to * to last 2 sts, p2.

Row 17 – MC: K2, *k1, k2tog, sl 1 wyib, ssk*, repeat from * to * to last 2 sts, k2.

Row 18 – MC: P2, *p2, sl 1 wyib, p1*, repeat from * to * to last 2 sts, p2.

Row 19 – MC: K2, *k2, k1 tbl, k1*, repeat from * to * to last 2 sts, k2.

Row 20 – MC: P2, *p2, k1, p1*, repeat from * to * to last 2 sts, p2.

Only work 20 rounds in the pattern (i.e. with A and B as contrasting colours – although you can also change the contrasting colours on each sleeve to get a variation). From here on work the sleeve in stockinette stitch using MC.

On the next round increase on either side of the beginning of the round as follows: K1, inc, k to last st, inc, k1.

Increase on every 8th (8th) 8th (6th) 6th round a total of 11 (13) 15 (16) 20 times. There are now 78 (82) 90 (92) 106 sts on the needle.

Work straight up until the sleeve measures 43 (44) 47 (48) 51 cm, and bind off on the next round as follows: Bind off 6 (6) 6 (9) 9 sts, k 66 (70) 78 (74) 88, bind off 6 (6) 6 (9) 9 sts.

Knit a second sleeve.

Yoke

Join the body and sleeves by placing the sleeves onto the needle over the bound off sts, and place markers at all transitions between body and sleeves (4 markers). There are now 319 (343) 383 (387) 439 sts on the needle.

Work 4 rows in flower pattern and stockinette stitch (flowers at the front edges and stockinette stitch elsewhere).

Begin the raglan decreases. Decrease on all RS-rows (i.e. every 2nd row) as follows:

Work in pattern and stockinette stitch to 3 sts before raglan marker, k2tog, k1, slip marker to right needle, k1, ssk, *k to 3 sts before marker, k2tog, k1, slip marker, k1, ssk*, repeat from * to * twice more, then work to end of row.

Decrease on every RS-row a total of 28 (30) 35 (35) 38 times.

At the same time – begin binding off for neckline when the yoke measures 15 (16.5) 18.5 (18.5) 19.5

cm (end with Row 9 or 19 of the pattern – if this does not fit, work in garter stitch in MC for the last few rows after the last possible Row 9 or 19).

Bind off for 8,2,2,2,1,1,1 (8,3,2,2,2,1,1) 8,3,2,2,2,1,1,1 (8,3,3,2,2,2,1,1) 10,3,3,3,2,2,1,1,1 sts at the beginning of each row (i.e. toward the neck).

When all raglan decreases and neckline shapings have been worked, there are 61 (65) 63 (63) 83 sts remaining on the needle.

I-cord edge

Using MC pick up and knit across all the bound off sts at the left front.

Knit 17 (19) 20 (22) 26 sts up along the bound off sts, knit 1 st up at the corner, then knit sts up along the front edge of the cardigan (1 per garter stitch ridge), end by knitting 1 st up at the corner, unpick the provisional cast on and place the resulting 223 (239) 263 (287) 311 sts onto an extra needle, k across these sts, knit 1 st up at the bottom corner of the right front, then knit sts up along the right front edge (1 per garter stitch ridge), knit 1 st up at the top corner, knit 17 (19) 20 (22) 26 sts up along the bound of sts.

Slip sts so the i-cord edge begins at the back of the neck. Cast on 4 sts on a size 4 mm needle.

Work: *k3, k2tog tbl (1 st from the i-cord and 1 st from the edge of the cardigan), slip the 4 sts from the right to the left needle, bring the yarn around the back and tighten it slightly*, repeat from * to * until all sts of the edge have been bound off into the i-cord.

Bind off the 4 sts from the i-cord.

Finishing

Sew the holes under the sleeves. Sew the ends of the i-cord together. Weave in all ends. Wash the cardigan gently and let it dry flat.