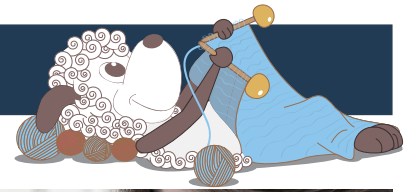


Corydalis - a lovely baby dress and bonnet



Design: Karen Skriver Lauger



"Corydalis" er en del af Filcolanas kollektion "Colours of the Scandinavian Summer". I kollektion har vores design-team ladet sig inspirere af lyset og de skønne farver i skagensmalerierne.

The little baby dress and bonnet is inspired by the beautiful painting "Corydalis" by Anna Syberg. The flowers' latin name is corydalis, which gives the design its name. The way the petals peek out among leaf and stem reminds me of the way the colours shift in the slip stitch pattern in this design.

3rd English edition - August 2018 © Filcolana A/S

Materials

Dress

Pernilla from Filcolana

Col A: 100 (100) 150 (150) 200 g in col 808 (Aqua Mist)

Col B: 50 (50) 50 (100) 100 g in col 818 (Fisherman Blue)

This is enough for both the dress and bonnet.

Bonnet

Col A: 20-25 g in col 808

Col B: 10-15 g in col 818

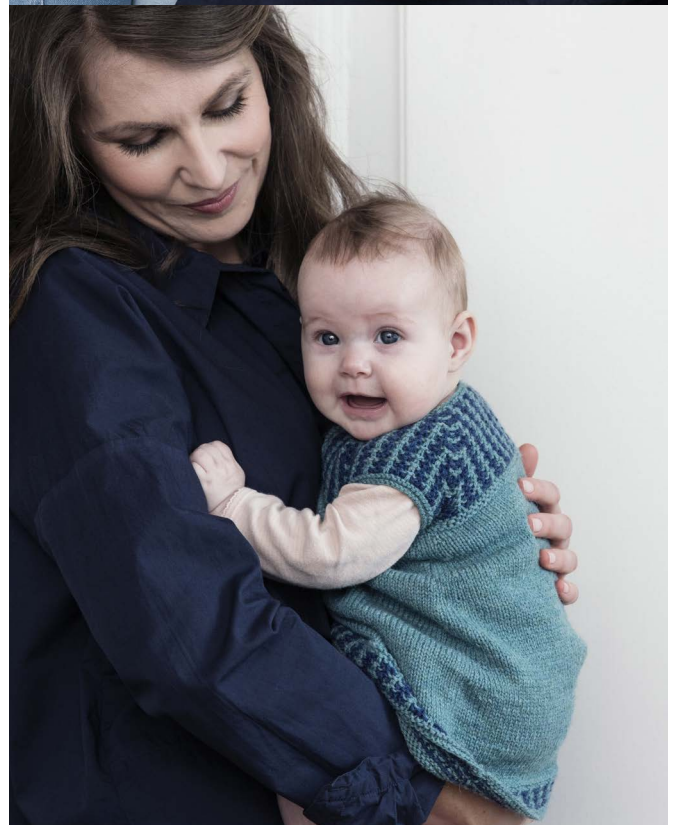
Circular needle size 3 mm, 40 cm, and 3½ mm, 40 cm for the dress

Circular needle size 3½ mm, 40 cm for the bonnet

Crochet hook size 3 mm for the dress

Markers or contrasting yarn

4 (4) 4 (5) 5 buttons, Ø 10 mm



Sizes

1 mth (6 mth) 12 mth (2 yrs) 4 yrs

Measurements

Dress

Fits a chest circumference: 40 (43) 45 (50) 55 cm

Bust: 41 (44) 46 (51) 56 cm

Full length: 33 (35) 40 (45) 50 cm

Bonnet

Fits head circumference of: 40-42 (42-44) 46-48 (50-52) 52-53 cm

Gauge

25 sts and 36 rows in stockinette stitch on size 3½ mm = 10 x 10 cm.

Special abbreviations

inc (increase): Pick up the loop between two sts onto the needle and knit or purl it through the back loop (as it fits with the knitting).

ssk (decrease): slip 2 sts knit-wise one after the other, slip them back onto the left needle and knit them together through the back loop.

Sl 1 wyib: Slip 1 st purl-wise with the yarn held to the back.

Sl 1 wytf: Slip 1 st purl-wise with the yarn to the front.

About the pattern

The dress is knit from the top down. The yoke of the dress is knit flat to the division into body and arms.

From here on the dress is knit in the round.

The bonnet is worked flat from the brim to the neck, where it is joined into a round for the decreases. Stitches are cast on and picked up along the bottom of the bonnet for the ties.

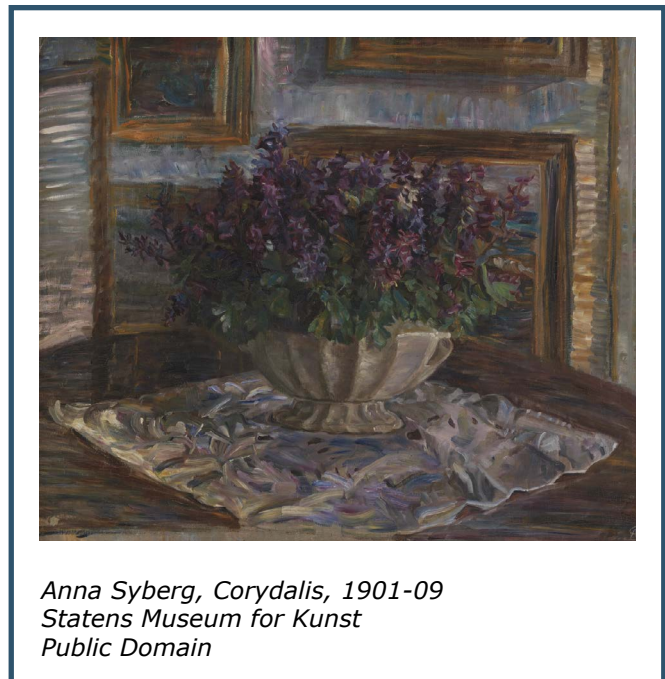
The chart shows the pattern from the right side (RS) and is read from the bottom up and from the right to the left on RS-rows (odd) and from left to right on WS-rows (even).

When working the pattern in the round (on sleeves and the bottom of the dress), the chart is read from the right to the left on all rows/rounds.

Chart for slip stitch pattern

Row 4	-	-	-	V	-	-	-	V	-	-	-	Row 3
Row 2	-	V	-	-	-	V	-	-	-	V	-	Row 1
	V					V				V		

- V = sl 1 wyib on RS, sl 1 wytf on WS
- = k1 on RS, p1 on WS
- = p1 on RS, k1 on WS



Anna Syberg, *Corydalis*, 1901-09
Statens Museum for Kunst
Public Domain

The red box marks the pattern repeat.

The slip stitch pattern is worked flat (back and forth) on the yoke of the dress and on the bonnet, and in the round on the sleeves and bottom of the dress.

Pattern repeat when worked flat:

Row 1 (RS) – with col B: *sl 1 wyib, k3*, repeat from * to *

Row 2 (WS) – with col B: *k3, sl 1 wytf *, repeat from * to *

Row 3 (RS) – with col A: *k2, sl 1 wyib, k1*, repeat from * to *

Row 4 (WS) – with col A: *k1, sl 1 wytf, k2*, repeat from * to *

Pattern repeat when worked in the round:

Round 1 – with col B: *sl 1 wyib, k3*, repeat from * to *

Round 2 – with col B: *sl 1 wyib, p3*, repeat from * to *

Round 3 – with col A: *k2, sl 1 wyib, k1*, repeat from * to *

Round 4 – with col A: *p2, sl 1 wyib, p1*, repeat from * to *

DRESS

Yoke

Cast on 59 (69) 69 (79) 79 sts on a circular needle size 3 mm with col A. Make sure to have a tail of at least 30 cm left to crochet the edge along the opening.

Row 1 (RS): k 10 (12) 12 (14) 14, place marker, k 10 (12) 12 (14) 14, place marker, k 18 (20) 20 (22) 22, place marker, k 10 (12) 12 (14) 14, place marker, k 11 (13) 13 (15) 15.

Row 2 (WS): K all sts.

Change to size 3½ mm and begin working the slip stitch pattern and increases for raglan. All raglan increases are worked on the RS just after a marker as follows:

RAGLAN: Remove marker, work (k1, place marker, yo, k1) into next stitch.

On the first WS-row after an increase work the 3 resulting sts from the raglan increase as k3, thereafter work the outer two sts into the slip stitch pattern.

The beginning of the slip stitch pattern differs on the different sizes. The pattern below gives direction for the beginning (Row 1 from chart) of the slip stitch pattern for the different sizes. After this first establishing row, the pattern is worked from the chart, where the new sts from the increases gradually are worked into the pattern.

Note, the first and last st of the row are edge sts and are always knit. Likewise the centre st of the raglan increase is always knit, and will thus never become part of the slip stitch pattern.

Size 1 mth:

Row 3 (RS): k1, [sl 1 wyib, k3] 2 times, sl 1 wyib, RAGLAN, [sl 1 wyib, k3] 2 times, sl 1 wyib, RAGLAN, [sl 1 wyib, k3] 4 gange, sl 1 wyib, RAGLAN, [sl 1 wyib, k3] 2 times, sl 1 wyib, RAGLAN, [sl 1 wyib, k3] 2 times, sl 1 wyib, k1.

Size (6 mth) 12 mth:

Row 3 (RS): k1, k1, [sl 1 wyib, k3] 2 times, sl 1 wyib, k1, RAGLAN, k1, [sl 1 wyib, k3] 2 times, sl 1 wyib, k1, RAGLAN, k1, [sl 1 wyib, k3] 4 times, sl 1 wyib, k1, RAGLAN, k1, [sl 1 wyib, k3] 2 times, sl 1 wyib, k1, RAGLAN, k1, [sl 1 wyib, k3] 2 times, sl 1 wyib, k2.

Size (2 yrs) 4 yrs:

Row 3 (RS): k1, k2, [sl 1 wyib, k3] 2 times, sl 1 wyib, k2, RAGLAN, k2, [sl 1 wyib, k3] 2 times, sl 1 wyib, k2, RAGLAN, k2, [sl 1 wyib, k3] 4 gange, sl 1 wyib, k2, RAGLAN, k2, [sl 1 wyib, k3] 2 times, sl 1 wyib, k2, RAGLAN, k2, [sl 1 wyib, k3] 2 times, sl 1 wyib, k3.

On the next row (WS) work the 3 sts from RAGLAN as k3, while the rest sts are worked in the pattern. Increase for raglan on every 2nd row (i.e. every RS-row) a total of 13 (14) 15 (17) 20 times, remember to work the first and last st k1 (edge sts). End with a WS-row after the last increase = 163 (181) 189 (215) 239 sts on the row.

Divide into sleeve and body.

Work in pattern to marker, remove marker, work 1 st (raglan-st), place the next 35 (39) 41 (47) 53 sts on hold on a piece of scrap yarn, cast on 3 (3) 3 (3) 3 new sts under the arm (place a marker before the middle of the new sts), remove marker at the next raglan, work in pattern across the 44 (48) 50 (56) 62



sts for the back, remove marker, work 1 st (raglan-st), place the next 35 (39) 41 (47) 53 sts on hold on a piece of scrap yarn, cast on 3 (3) 3 (3) 3 new sts under the arm (place a marker before the middle of the new sts), work in pattern to end of row = 99 (109) 113 (127) 139 sts on the needle.

Work another 1 (1) 1.5 (2) 2.5 cm in pattern back and forth. The raglan-st and the new sts under the arms are worked into the pattern as far as possible. The middle st under the arm can possibly be worked as k1 on all rows.

Break col B and work the skirt of the dress with col A. Work 4 rows in garter stitch (k all sts) and increase 2 sts in the middle st under the arm (work a RAGLAN increase) on the first row.

Join the work into a round by knitting all sts to the last st and then knitting the last stitch of the row together with the first stitch as ssk. K to marker under the left sleeve, which is now the new beginning of the round = 102 (112) 116 (130) 142 sts on the needle.

Work 3 (3) 5 (5) 5 rounds in stockinette stitch.

Begin increases for the skirt: *k2, inc 1, k to 1 st before marker, inc 1, k1*, repeat from * to *.

Continue in stockinette stitch and work increases on every 6th (7th) 7th (7th) 7th round a total of 9 (9) 10 (11) 12 times = 138 (148) 156 (174) 190 sts on the needle.

Work straight down in stockinette stitch until the skirt measures 23 (25) 29 (33) 37 cm from the cast on under the sleeve – or has the desired length.

Adjust the stitch count on the next round to 140 (148) 156 (176) 192 sts.

Work: p 1 round, k 1 round, p 1 round. Join col B and work the slip stitch pattern in the round. Work a total of 10 (10) 10 (18) 18 rounds of the pattern (equal to 2.5 (2.5) 2.5 (4.5) 4.5 repeats of the pattern). Break col B and work the rest with col A. Work: k 1 round, p 1 round, k 1 round, and bind off in purl on the next round.

Sleeves

Place the 35 (39) 41 (47) 53 sts for the sleeves back on the needle. Join the colour that is the next in the pattern. Begin at the middle cast on st under the arm, and knit 2 sts up along the cast on edge, 1 st at the transition to the sleeve, work in pattern across the sleeve sts, knit 1 st up in the transition, and 1 st from the cast on edge. The beginning of the round is at the middle under the arm. On the next round decrease 2 sts just under the arm by working k2tog under the arm twice.

Work round in pattern with col A and col B until the sleeve measures 1 (1) 1.5 (2) 2.5 cm under the arm. End with 2 rounds of col B. Break col B and finish the sleeve with col A. Work: k 1 round, p 1 round, k 1 round, and bind off in purl on the next round.

Work the second sleeve like the first.

Button band

From the bottom of the right side of the front knit up 1 st per garter stitch ridge (approx. 20 (21) 23 (26) 30 sts) with col A.

Row 1 (WS): Sl 1 wytf, k2tog, yo, *k 3 (3) 4 (3) 4, k2tog, yo*, repeat from * to * 3 (3) 3 (4) 4 times, k 2 (3) 2 (3) 3.

Row 2 (RS): Sl 1 wytf, k all sts.

Row 3 (WS): Bind off all sts in k.

Crochet a row of single crochet down along the left front to avoid that the edge flares. Use the tail from the cast on.

Finishing

Sew in the buttons in the left front edge across the button holes.

Weave in all ends.

BONNET

Cast on 75 (83) 91 (99) 115 sts on a size 3½ mm needle using col A. Work 2 rows in garter stitch (k all sts) (first row is RS).

Join col B and begin working the slip stitch pattern.

Row 1 (RS) – with col B: *k3, sl 1 wyib*, repeat from * to * to the last 3 sts, k3.

Row 2 (WS) – with col B: *k3, sl 1 wytf*, repeat from * to * to the last 3 sts, k3.

Row 3 – with col A: k1, *sl 1 wyib, k3*, repeat from * to * to the last 2 sts, sl 1 wyib, k1.

Row 4 – with col A: k1, *1 la gf, k3*, repeat from * to * to the last 2 sts, sl 1 wytf, k1.

Repeat these 4 rows until the work measures 7 (8) 10 (10) 11 cm, end with Row 2 with col B. Break col B and finish the bonnet with col A.

Work 4 rows in garter stitch with col A (= 2 garter stitch ridges). Now work back and forth in stockinette stitch, but work the first and last stitch as k1 (edge sts) until the work measures 10 (11) 12 (13) 14 cm.

Next row (RS): k1, k2tog, k to the last 3 sts, ssk, join into a round by working the last stitch of the row together with the first stitch as ssk = 72 (80) 92 (96) 112 sts on the round.

Work decreases for the crown as follows:

Round 1: *k6, k2tog*, repeat from * to * to end of round.

Round 2: K all sts.

Repeat these 2 rounds, but with 1 stitch less between the decreases until you have worked *k2tog* all the way round. K 1 round. Break the yarn and pull it through the last 9 (10) 11 (12) 14 sts. Tighten well to close the hole and weave in the end on the WS.

Ties

Cast on 55 (55) 60 (65) 75 sts on a size 3½ mm needle with col A, then knit up 1 st in each garter stitch ridge along the neck of the bonnet from the RS, then cast on another 55 (55) 60 (65) 75 sts at the end of the row by joining a piece of yarn in col A and doing a normal cast on – that way the ties will be identical.

Knit 2 rows (garter stitch). Bind off in knit on the next row. Weave in all ends.