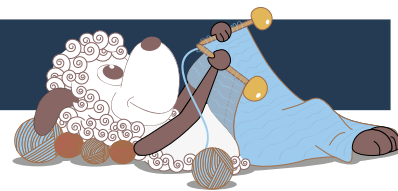


# Lille Alvi - a wonderful kids sweater



Design: Hanne Pjedsted

The design is inspired by the classic scandinavian sweaters which are very prevalent in the media at the moment. The design is knit in the wonderful Arwetta Classic, which is machine washable. Lille (meaning little) Alvi is worked in the round all the way to the neckline, so there is almost no sewing at the end.

1st English edition, March 2014, © Filcolana A/S  
English translation: Signe S. Simonsen

## Materials

Arwetta Classic by Filcolana in 2 colors:  
100 (150) 150 (200) 200 (250) g in the main color  
(here color 954 a light grey melange)  
and 100 (100) 150 (150) 200 (200) g of the contrast  
color (here color 956 a charcoal grey melange)  
2,5 mm and 3 mm circular needle, 60 cm or 80 cm  
long (80 cm for the larger sizes)  
3 mm double-pointed needles for the sleeves  
2,5 mm short circular needle for the neck edge  
Markers or loops of yarn  
Stitch holders

## Sizes

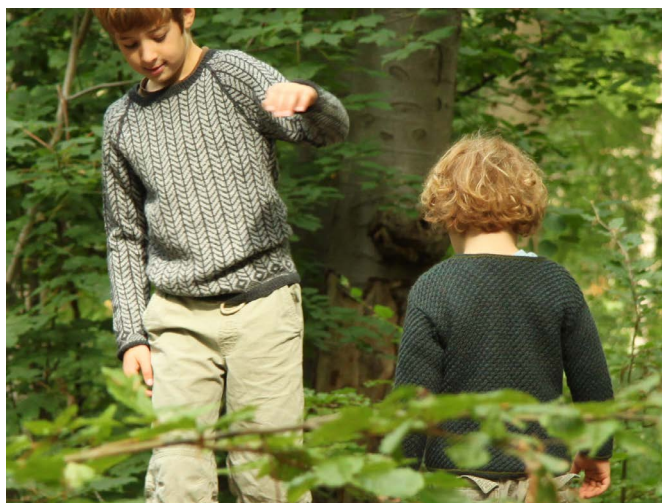
4 years/104 cl, (6 years/116 cl), 8 years/128 cl, (10  
years/140 cl), 12 years/152 cl, (14 years/156 cl)

## Measurements

Body, chest: 56 (60) 64 (70) 76 (80) cm  
Sweater, chest: 64 (64) 72 (80) 88 (88) cm  
Sleeve length to armhole: 32 (35) 38 (40) 42 (44) cm  
Length to armhole: 25 (28) 32 (34) 36 (39) cm

## Gauge

30 sts and 38 rows in stockinette stitch in herring-  
bone pattern on 3 mm needles = 10 x 10 cm.



## Special abbreviations

**M1:** Make 1 (increase). Lift the bar between the stitches onto the left needle and knit into the back of it.  
**Skp:** slip1, knit1, pass the slipped stitch over.

## Directions for knitting

The body of the sweater is worked in the round to the armholes, where stitches are bound off. The sleeves are then knit and joined to the body over where stitches were bound off for the armholes. Then the raglan yoke is worked in the round to the neckline. After stitches have been bound off at the front of the neckline, the work is finished knitting back and forth.

**Body**

Cast on 192 (192) 216 (240) 264 (264) sts using the contrast color (charcoal grey) and a 2,5 mm circular needle. Join in the round and place a marker for the beginning of the round.

Work 6 (6) 7 (7) 8 (8) rounds of k1, p1 ribbing.

Change to a 3 mm circular needle and work the chart in stockinette stitch. Place a second marker after 96 (96) 108 (120) 132 (132) sts to mark the "side seam" (the first st after the marker is charcoal grey and is the "side seam stitch").

Work the charted border pattern once, then repeat the herringbone pattern until the work measures 25 (28) 32 (34) 36 (39) cm.

Bind off 11 sts for the armhole at either side: bind off 5 sts before and 5 sts after the side seam stitch plus the side seam stitch itself. The bound off sts fall between 2 charcoal grey stripes in the pattern. Let the body rest and knit the sleeves.

**Sleeves**

Cast on 48 (48) 52 (52) 60 (60) sts using the charcoal grey yarn and 3 mm double-pointed needles. Join in the round and place a marker for the beginning of the round.

Work 6 (6) 7 (7) 8 (8) rounds of k1, p1 ribbing.

Work the chart in stockinette stitch while increasing 3 (3) 2 (2) 3 (3) sts on each of the four double-pointed needles across the first round, so there are 60 (60) 60 (60) 72 (72) sts on the needle.

Work the charted border pattern (= 12 rounds) of the chart.

Increase on the 12th round: M1 in charcoal, work in pattern to end of round.

(The 2 charcoal sts for the sleeve seam and are worked in charcoal throughout. The increases are worked on either side of these 2 sts).

Continue in the charted herringbone pattern, while working and increase row every 4th (alternately every 4th and every 5th round) alternately every 4th and every 5th round (every 5th round) alternately every 5th and every 6th round (alternately every 5th and every 6th round) a total of 17 (17) 23 (23) 23 (23) times.

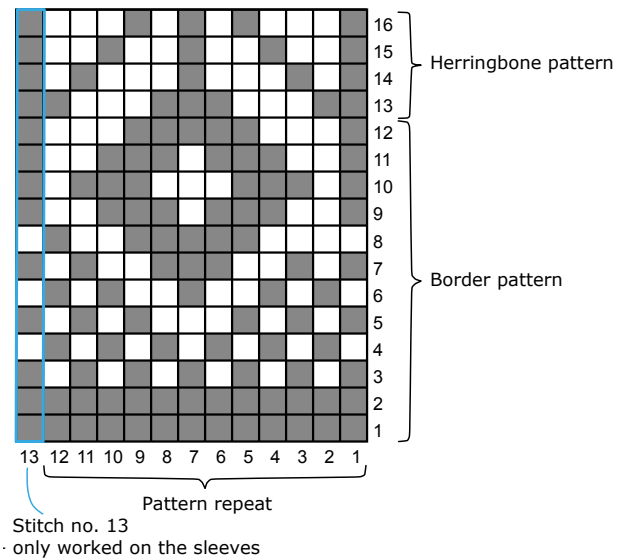
Increase row: K1, M1, work in pattern until there is 1 st left of the round, M1, k1.

There are now 95 (95) 107 (107) 119 (119) sts on the needle.

Work straight in pattern until the sleeve measures approx. 32 (35) 38 (40) 42 (44) cm, ending on the same row of the pattern as on the body. Bind off 10 sts for the armhole at the same time, evenly distributed on either side of the marker so the pattern is symmetrical and there is 1 charcoal grey stitch on either side of the bound off sts.

85 (85) 97 (97) 109 (109) sts left on the needle.

Join the sleeve to the body over where sts were bound off. Work the second sleeve the same way as the first.

**Chart****Raglan Yoke**

Place markers the places where the sleeves meet the front and back (between the charcoal grey sts). The beginning of the round is where the right sleeve meets the front, place a special marker here.

There are now a total of 340 (340) 388 (412) 460 (460) sts on the needle.

Work raglan decreases:

\*Skp in charcoal, work to 2 sts before marker, k2tog in charcoal\*. Repeat from \* to \* to end of round (= 8 sts have been decreased).

Work raglan decreases:

Size 4 years: Repeat raglan decreases every round a total of 4 times, then every other round until a total of 18 decrease rounds have been worked (= 196 sts on the needle)

Size 6 years: Repeat raglan decreases every other round until a total of 18 decrease rounds have been worked (= 196 sts on the needle)

Size 8 years: Repeat raglan decreases every round a total of 4 times, then every other round until a total of 21 decrease rounds have been worked (= 220 sts on the needle)

Size 10 years: Repeat raglan decreases every other round until a total of 22 decrease rounds have been worked (= 236 sts on the needle)

Size 12 years: Repeat raglan decreases every round a total of 4 times, then every other round until a total of 25 decrease rounds have been worked (= 260 sts on the needle)

Size 14 years: Repeat raglan decreases every other round until a total of 25 decrease rounds have been worked (= 260 sts on the needle)

Work a round without decreases (all sizes). Break the yarn at the beginning of the round and place the 19 (21) 23 (25) 27 (27) centermost front sts on a stitch

holder for the neckline.

Work back and forth in pattern, starting right after the sts on the stitch holder, continuing to work raglan decreases every RS row (starting with the first row). Bind off for the neckline by binding off 4 sts at the beginning of the next 2 rows, then 2 sts at the beginning of the next 4 rows, then 1 st at the beginning of every row until all the sts for the front have been bound off or decreased for the raglans (all sizes). Let the remaining sts rest on the needle.

### **Neck edge**

Pick up and knit sts for the neck edge using the charcoal grey yarn and the small circumference 2,5 mm circular needle: Knit across the resting sts on the circular needle and the stitch holder and pick up and knit 1 st for every bound off stitch. You need to end up with a even number of sts - approx. 136 (140) 148 (160) 164 (168) sts.

Join in the round and place a marker for the beginning of the round.

Work 6 (6) 7 (7) 8 (8) rounds of k1, p1 ribbing in charcoal grey.

Bind off in pattern without tightening the edge. Use a larger needle for the bind off if necessary.

### **Finishing**

Weave in all ends. Sew up the holes under the arms using Kitchener stitch. Steam the work lightly or wash it and place it on a flat surface to dry.