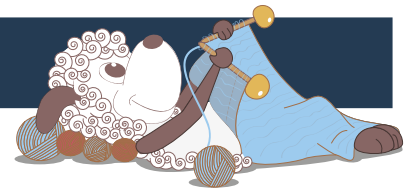


Ammi - a cardigan for the littlest ones



Design: Hanne Pjedsted

A sweet and simple cardigan with fine little details, knit in the softest 100% merino wool. The cardigan functions both as a light jacket for early summer and as a warm layer under the coat for the cold season. The little details make this a challenging and fun knit.

2nd English edition - May, 2015 © Filcolana A/S
English translation: Signe Strømgaard

Materials

100 (130) 175 (200) g of Anina by Filcolana in color 101 (natural white)
3 mm circular needle, 60 or 80 cm long
Markers
6 (7) 7 (7) small buttons

Sizes

3 months/62 cl (6 months/68 cl) 1 years/80 cl (2 years/92 cl)

Measurements

Chest, body: 46-48 (50-52) 53-55 (56-58) cm
Chest, cardigan: 53 (57) 61 (65) cm
Length to armhole: 15 (17) 19 (22) cm
Sleeve length: 16 (19) 22 (25) cm

Gauge

28 sts and 62 rows in pattern on 3 mm needles = 10 x 10 cm.

Special abbreviations

M1: Make 1. Increase one stitch by lifting the chain between sts onto the left needle and knitting it through the back loop.



Skp: slip 1 stitch, knit the next stitch, pass the slipped stitch over the knit one.

K1b: Knit 1 in the row below. Insert needle into the stitch below the next stitch on the needle and knit it, while letting the next stitch slip off the needle at the same time.

Edge sts: Work a 2 stitch chained edge along the front edges:

All RS rows: Knit the 2 first and 2 last stitches.

All WS rows: Slip the 2 first and 2 last stitches purl-wise with the yarn held in front.

Note: When turning to work the RS row, the working yarn will be attached to the 3rd stitch.

Special techniques

The front edges are worked over a total of 8 sts each, with 2 edge sts at the very edge, 5 garter stitches and 1 K1B stitch (knit on the WS, K1B on the RS). Buttonholes in the buttonhole edge are worked from the RS: 2 edge sts (k), k1, k2tog, 2 yo, skp, k1b. Knit both yarn overs through the back loop on the next row.

Pattern (divisible by 6 + 5)

Row 1 and all odd numbered rows (WS): Knit.

Row 2, 4, 6, 8 and 10: *K5, k1b*. Repeat from * to *. End with k5.

Row 12, 14, 16, 18 and 20: K2, *k1b, k5*. Repeat from * to *. End with k1b, k2.

Repeat these 20 rows.

See pattern chart on page 3.

Directions for knitting

The cardigan is worked back and forth in 1 piece - including the front edges, to the armholes. Here the work is split into 2 fronts and a back. The sleeves are the knit and joined with the body and then the yoke is worked in one piece.

Body

Cast on 159 (171) 183 (195) sts using a 3 mm circular needle. Knit 1 row (Row 1 = WS), remembering to worked the chained edge sts at either end of the work.

Row 2: Work the 8 stitch front edge (right front edge, buttonhole band), then bind off all sts until the last 8 sts on the needle, work the 8 stitch front edge (left front edge, button band).

Row 3: Work the 8 stitch front edge, then pick up and knit 1 stitch for each bound off stitch, but pick up and knit the stitch below the bind-off, ie. from the knit stitch right below the chain of bound off sts along the edge. Work the 8 stitch front edge at the end of row. There are once again 159 (171) 183 (195) sts on the needle. (The bind off sits as a chain of sts along the cast-on).

Continue straight in pattern, with the 8 stitch front edge at the beginning and end of the rows. Place a marker at the each side seam, ie. after 41 (44) 47 (50) sts (right front) and again after 77 (83) 89 (95) more sts (back). The last 41 (44) 47 (50) sts make up the left front.

Work the first buttonhole on the 6th row, as described above. Work a buttonhole every 24th (24th) 26th (28th) row.

Continue straight as established until the work measures 15 (17) 19 (22) cm. Bind off for the armholes: Work to 6 sts before the marker, bind off 11 sts, knit to 5 sts before the next marker and bind off 11 sts. (to maintain the symmetri of the pattern, 6 sts have been bound off on each front and 5 sts at each end of the back). (= 137 (149) 161 (173) sts on the needle).

Let the work rest, while the sleeves are knit.

Sleeves

Cast on 39 (41) 43 (45) sts and work the edge the same way as the hem of the body by binding off and picking up sts. Continue in pattern: Knit 1 (2) 3 (4) sts, then work *k1b, k5*. Repeat from * to *. End with k1b, knit 1 (2) 3 (4) sts.

Continue as established, working back and forth while working an increase row every 10th row a total of 8 (10) 11 (12) times = 55 (61) 65 (69) sts on the needle. New sts are worked in pattern.

Increase row (RS): K1, M1, work in pattern to the last stitch, M1, k1.

Work straight in pattern until the sleeve measures 16 (19) 22 (25) cm.

Bind off 6 sts at the beginning of the next 2 rows = 43 (49) 53 (57) sts on the needle.

Note: End the pattern on the same row as on the

body (or on the corresponding row in the other half of the pattern repeat, so e.g. Row 4 and Row 14)

Work the second sleeve the same way as the first, then join the sleeves to the body over where stitches were bound off for the armholes. Place markers the 4 places where the sleeves meet the back and fronts. There are now a total of 223 (247) 267 (287) sts on the needle.

Yoke

Work back and forth in pattern as established for the each part (sleeves and body), while working decreases at the 4 raglan markers: Work to 3 sts before the marker where right front and right sleeve meet, k2tog, k1b, skp. Knit to 2 sts before the marker where right sleeve and back meet, k2tog, k1b, skp. Knit to 3 sts before the marker where back and left sleeve meet, k2tog, k1b, skp. Knit to 2 sts before the marker where left sleeve and left front meet k2tog, k1b, skp.

Work decreases at the raglan markers every RS row a total of 14 (16) 17 (18) times. Place the first and last 10 (10) 11 (11) sts of the row onto stitch holders for the neckline. Knit to 4 sts before the stitch holder, turn and work back to 4 sts before the first stitch holder. Turn and work to 2 sts before the last turn, then turn and work back to the same point at the other end. Continue turning 2 sts before the last turn another 1 (1) 2 (2) times at each end of the work. A total of 6 (6) 8 (8) turns have been made. Break the yarn.

Neck Edge

Join the yarn on the WS right before the 8 sts of the button band (left front). Knit 1 stitch in each stitch on the needle and pick up the chain between sts at each turning point, then knit it together with the following stitch on the needle through the back loop to close any little holes that might otherwise have been there. Knit a total of 9 rows in garter stitch on the edge.

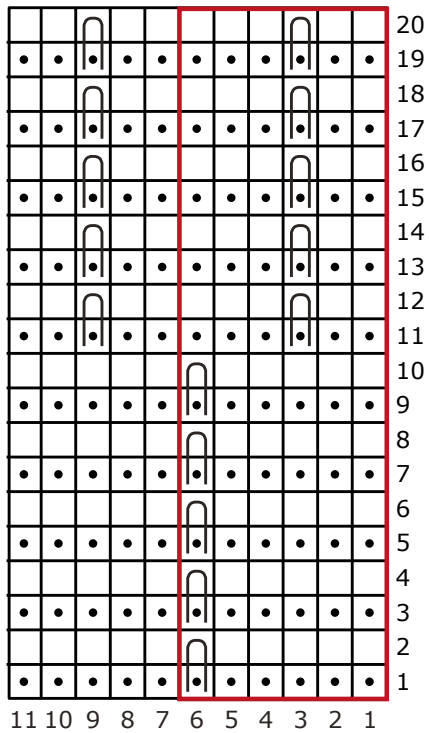
Work the last buttonhole on the 6th row. Bind off all sts between the front edges on the next RS row (the same way as on the hem). Pick up and knit the sts on the next row, then bind off all sts on the next RS row, while knitting the 2 first sts and the last 2 sts together before binding them off (this will ensure that the chained edges twist toward the WS on the bind off).


Finishing

Weave in all ends. Sew the sleeve seams. Sew on the buttons across from the buttonholes.

Gently steam the finished work or wash it, pull it into shape and lay it on a flat surface to dry.

Pattern chart



- Knit on the RS
- Purl on the WS
-  Knit on the 1st row (WS). Knit in the stitch below the stitch on the needle on the 2nd row (RS). Let the stitch on the needle slide off the needle.
- Pattern repeat