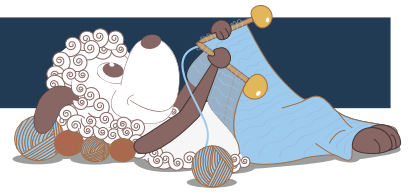


Somnus - a lovely blanket for the littlest ones



Design: Anne-Sophie Askjær



C.F. Clemens: L. Holberg, Statens Museum for Kunst, public domain

*This design is part of a little collection inspired by the works of the famous Danish-Norwegian poet and author **Ludvig Holberg**. Holberg lived from 1684-1754, and even though this is a long time ago, he had a very special talent for showing – and exposing – different types of people, which is a big part of what makes him relevant still today.*

This lovely blanket is inspired by Holberg's comedy "Barselsstuen". Although women no longer have an extended period of confinement after birth where they are to remain in bed to recover, the particular mood of the "barselsstue" after a new baby is born with well-meaning maternity advice, gossip and chatter still exists. Most bring a gift for the new baby and this sweet blanket worked in a simple slip-stitch technique would make a lovely gift.

1st English edition - January 2018 © Filcolana A/S
English translation: Signe Strømgaard

Materials

Pernilla from Filcolana:

MC: 200 g in color 334 (Light Blush)

CC1: 100 g in color 957 (Very Light Grey - melange)

CC2: 100 g in color 827 (Dijon - melange)

4,5 mm circular needle, 80 cm

3,5 mm circular needle, 60 or 80 cm

Measurements

72 cm width, 78 cm length

Gauge

26 sts x 30 rows in slip-stitch pattern on 4,5 mm needles = 10 x 10 cm

Special abbreviations

Sl1 wyif: Slip 1 stitch purl-wise with yarn in front

Sl1 wyib: Slip 1 stitch purl-wise with yarn in back

Pattern

Row 1 (RS)(CC1): *sl1 wyib, k1*. Repeat from * to *. End with sl1 wyib.

Row 2 (CC2): *p1, sl1 wyif* Repeat from * to *. End with p1.

Row 3 (MC): Knit all sts.

Row 4 (CC1): *sl1 wyif, p1* Repeat from * to *. End with sl1 wyif.

Row 5 (CC2): *k1, sl1 wyib* Repeat from * to *. End k1.



Row 6 (MC): Purl all sts.
Repeat these 6 rows.

Blanket

Cast on 181 sts with MC on a 4,5 mm circular needle.
Work in pattern until the blanket measures approx.
77 cm. End on Row 6 of the pattern. Bind off all sts
on the next row.

Edges

Pick up and knit 1 sts in every stitch with the 3,5 mm
circular needle and MC along the cast-on edge. Knit
back and forth.

Row 1: Knit all sts.

Row 2: K1, M1 by picking up the chain between the
sts from the front and knitting into the back of it, knit
to the last stitch, M1, k1.

Work Row 1 and 2 once more. Work Row 1 one final
time. Bind off.

Work the cast-off edge the same way.

Pick up and knit 1 sts in every stitch with the 3,5
mm circular needle and MC along the first side of the
blanket. pick up and knit 3 sts for every 4 rows (for
a total of approx. 173 sts). Work the same as above.
Repeat for the second side.

Finish by sewing the 4 corners of the edges.

